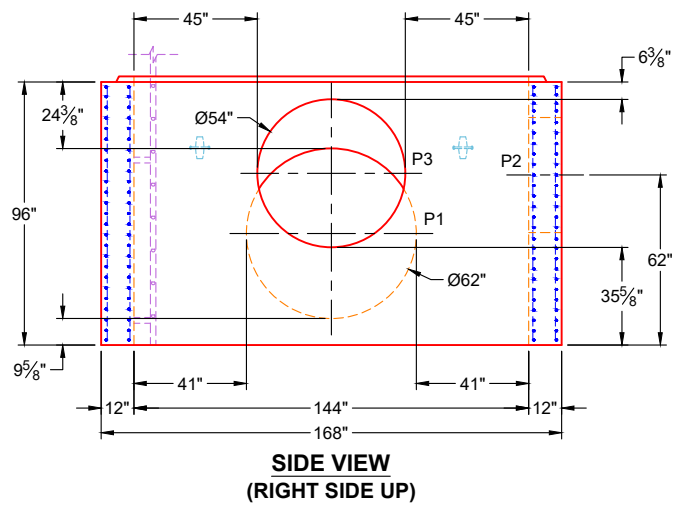
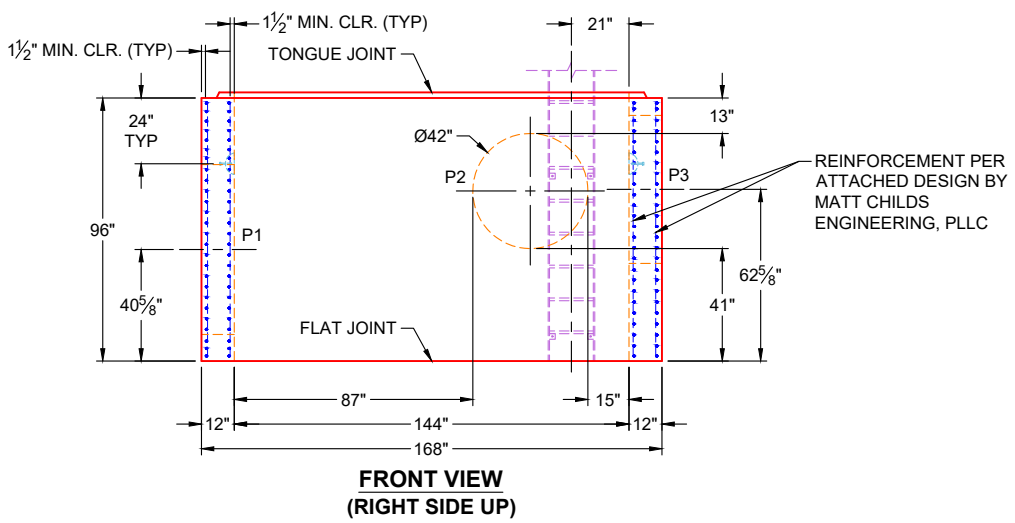



- GENERAL NOTES:**
1. MANUFACTURED TO ASTM C-913 (LATEST REVISION)
 2. CONCRETE: 5,000 PSI AT 28 DAYS
 3. REINFORCEMENT PER ATTACHED DESIGN BY MATT CHILDS ENGINEERING, PLLC
 4. WEIGHT: 53,379 LBS
 5. HALLIDAY LADDER & SAFETY POST SUPPLIED BY ICAST
 6. LIFTERS: 4 EA. 8CA18 CONAC A-ANCHORS FOR PLANT & FIELD HANDLING
 7. XYPEX ADMIXTURE REQUIRED
 8. KOR-N-SEAL BOOTS SUPPLIED BY OTHERS

OPENINGS						
PIPE ID	ANGLE	CL ELEV	INV ELEV	PIPE SIZE & TYPE	CONNECTOR	HOLE SIZE
P1	90	397.39	395.14	54" DUCTILE IRON	KOR-N-SEAL S206-62	Ø62"
P2	180	399.17	397.67	36" DUCTILE IRON	KOR-N-SEAL S206-42	Ø42"
P3	270	399.22	397.22	48" DUCTILE IRON	KOR-N-SEAL S206-54L	Ø54"
P4	90	412.67	412.00	16" FRP	KOR-N-SEAL S206-20	Ø20"



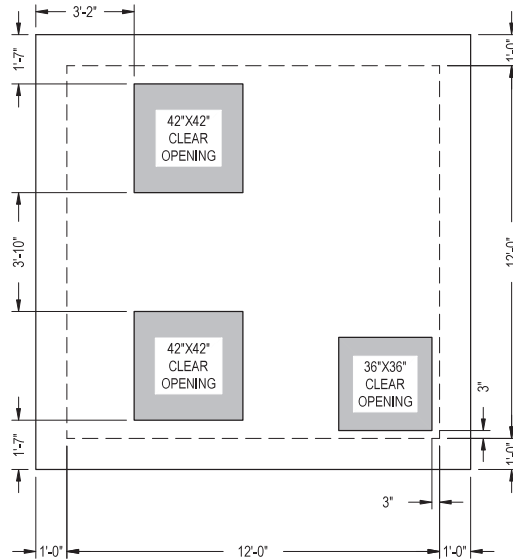
PRODUCTION WORK ORDER		PRODUCT I.D.: CVRX	DESCRIPTION: 144" X 144" X 96" RISER W/ XYPEX	
	QUALITY CONTROL CHECKLIST		CUSTOMER: GARNEY COMPANIES, INC.	
	<input type="checkbox"/> ALL DIMENSIONS CORRECT. <input type="checkbox"/> LIFTERS INSTALLED. <input type="checkbox"/> HOLE LOCATION(S) CORRECT. <input type="checkbox"/> REINFORCING CORRECT. <input type="checkbox"/> SURFACE QUALITY ACCEPTABLE. <input type="checkbox"/> EDGES CHAMFERED. <input type="checkbox"/> ALL PATCHWORK ACCEPTABLE.		PROJECT: EAST REGIONAL BANK PUMP STATION	
	PRODUCT VIEW: RIGHT SIDE UP		STRUCTURE: GRINDER VAULT (PIECE 1)	
	PLANT: BEAVER DAM, KY		ORDER NO: 25-1137B	
	WEIGHT: 53,379 LBS		PE: J.H. ROSS DRAWING: K. CARDWELL	
	TOP SECTION JOINT: TONGUE		DATE: 11/25/25 SCALE: NTS PG. 1 OF 1	
BASE SECTION JOINT: FLAT				
QC CHECK INITIALS:				

THIS DRAWING IS THE PROPERTY OF INFRASTRUCTURE PRECAST, INC. ANY USE OR DUPLICATION OF THIS DRAWING WITHOUT PRIOR AUTHORIZATION IS STRICTLY PROHIBITED.

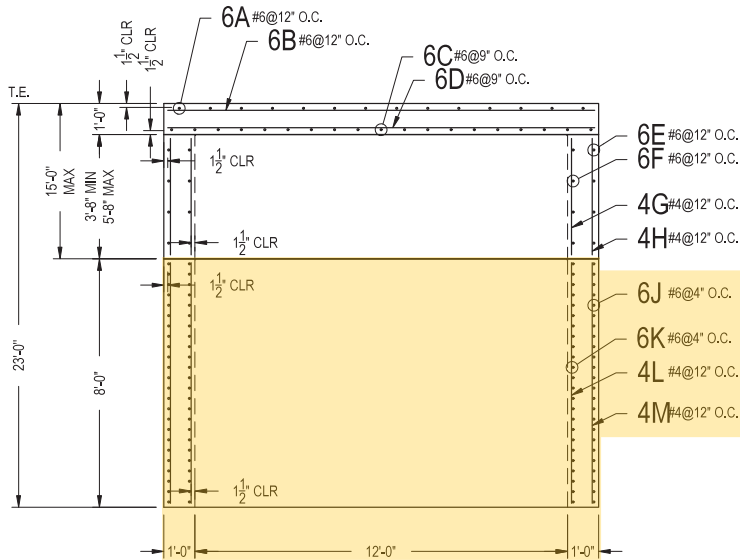
DESIGN NOTE:

HS20 LOADING - ASTM C890
 CONCRETE 28 DAY COMPRESSIVE STRENGTH - 5000 PSI
 REINFORCEMENT STEEL - 60,000 PSI
 REBAR MIN SPLICE LENGTHS: #4-22" #5-28" #6-33"
 PLACE 4-#4 BAR DIAGONAL AROUND OPENING(S)

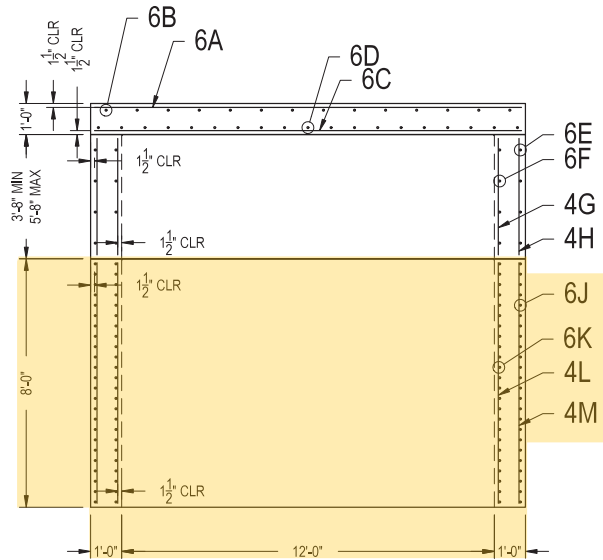
STEEL REINFORCEMENT SHOWN BELOW SHALL BE CUT AS REQUIRED FOR WALL PENETRATIONS AND PRECAST JOINT LOCATIONS. PLEASE NOTE: DUE TO PRECAST PRODUCTION CONSTRAINTS, NO REINFORCING WILL BE CONTINUOUS ACROSS PRECAST JOINTS.



PLAN VIEW



FRONT VIEW



RIGHT VIEW

**12X12X22
GRINDER
VAULT**

REINFORCING STEEL SCHEDULE

MARK	NO.	LENGTH	TYPE	lb/EA.	TOTAL LB	BENDING DIAGRAM
6A	14	13'-9"	STR.	20.6525	289,1350	
6B	14	13'-9"	STR.	20.6525	289,1350	
6C	19	13'-9"	STR.	20.6525	392,3975	
6D	19	13'-9"	STR.	20.6525	392,3975	
6E	VARIES	30'-3" (2)	BENT	45.4355	VARIES	
6F	VARIES	27'-8" (2)	BENT	41.5553	VARIES	
4G	50	VARIES	STR.	VARIES	VARIES	
4H	56	VARIES	STR.	VARIES	VARIES	
6J	24	30'-3" (2)	BENT	45.4355	2180,9040	
6K	24	27'-8" (2)	BENT	41.5553	1994,6560	
4L	50	7'-9"	STR.	5.1770	258,8500	
4M	56	7'-9"	STR.	5.1770	289,9120	



MATT PHILLOS ENGINEERING PLLC
 516 E. INVERFAIRLE DR. #1017
 ROCKWALL, TX 75087

GRINDER VAULT
 12'-0" x 12'-0"
 GARNEY COMPANIES INC
 EAST REGIONAL BANK PUMP STATION
 DATE: 9/27/2023
 PAGE: 1 OF 1

REVISIONS
 DRAWN BY: MBJ
 SCALE: 1/4" = 1'
 A
 B
 C
 D