



Structure ID: SIT - Stationary Infantry Target

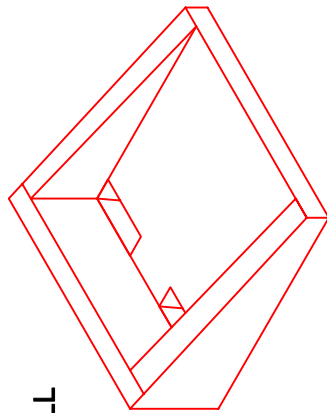
P1 SIT

STATIONARY INFANTRY TARGET - SIT - 54" x 54"

GENERAL NOTES:

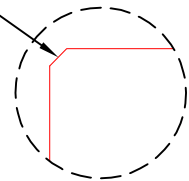
1. MANUFACTURED TO ASTM C-913 (LATEST REVISION).
2. CONCRETE: 4,000 PSI AT 28 DAYS.
3. REINFORCING: #5 BAR @ 12" C-C E.W. SEE REINFORCEMENT CUT SHEET FOR ADDITIONAL INFORMATION. PER ASTM A615 (GRADE 60).
4. 1/2" CHAMFER ON ALL EXPOSED EDGES.
5. WEIGHT:
 FIRST POUR - 1,860 LBS
SECOND POUR - 1,115 LBS
 TOTAL - 2,975 LBS EACH
6. 64 TOTAL REQUIRED

SECOND POUR DRAWING

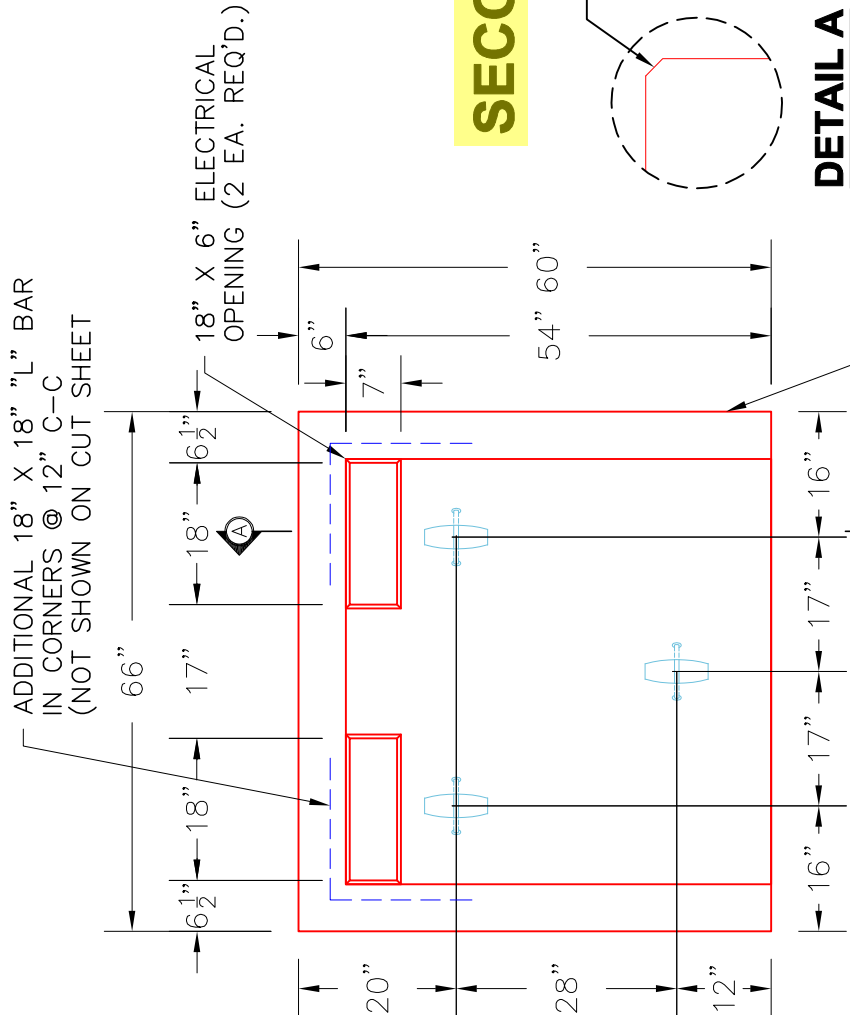


ISOMETRIC VIEW

1/2" CHAMFER ON ALL EXPOSED EDGES

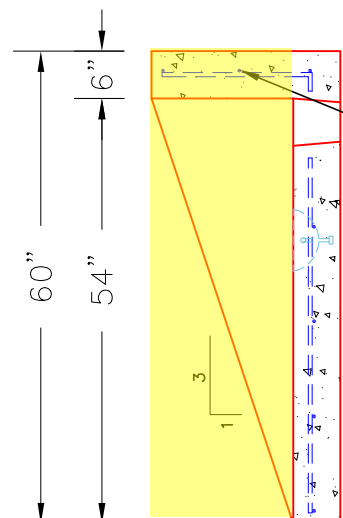


DETAIL A

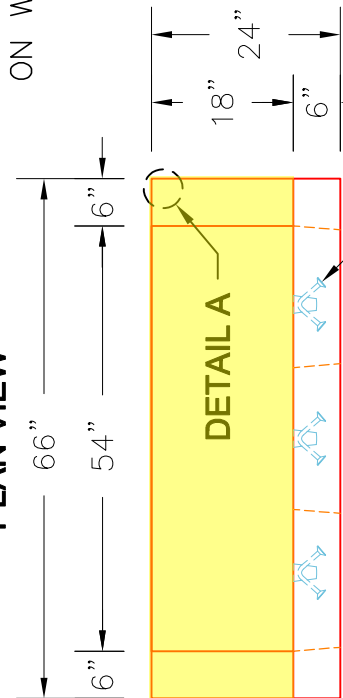


3:1 SLOPE ON WALLS

PLAN VIEW



SECTION A-A



FRONT VIEW

#4 BAR @ 9" C/C E.W. WITH 12" LAPS MINIMUM. (HORIZ. IN WALLS)

3 EA. CONAC 5CA14 UTILITY ANCHORS FOR HANDLING.



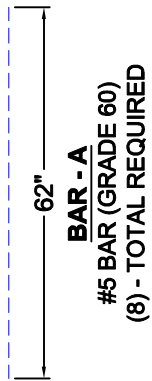
Structure ID: SIT - Stationary Infantry Target

P1 SIT

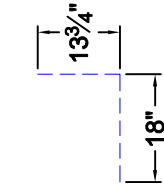
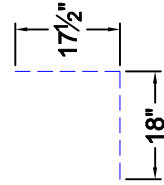
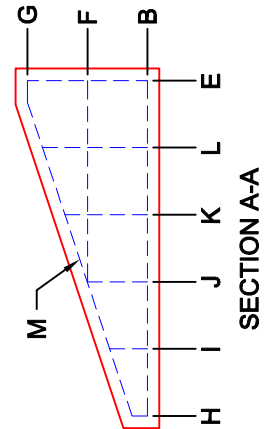
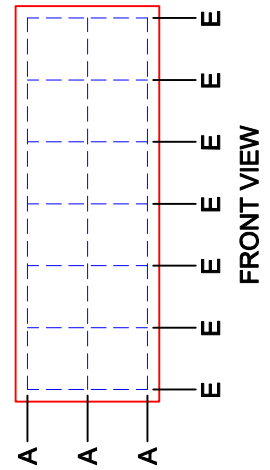
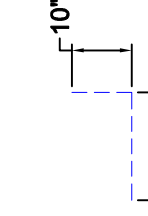
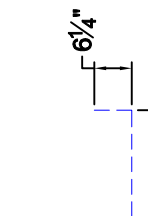
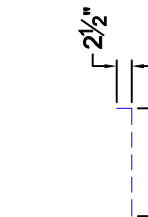
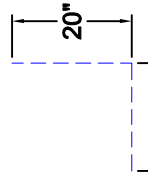
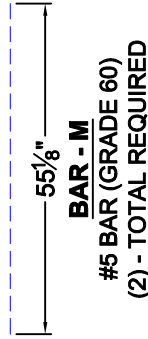
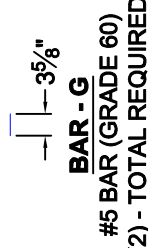
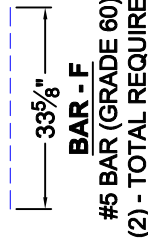
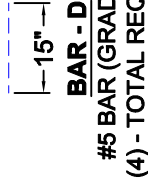
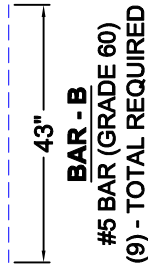
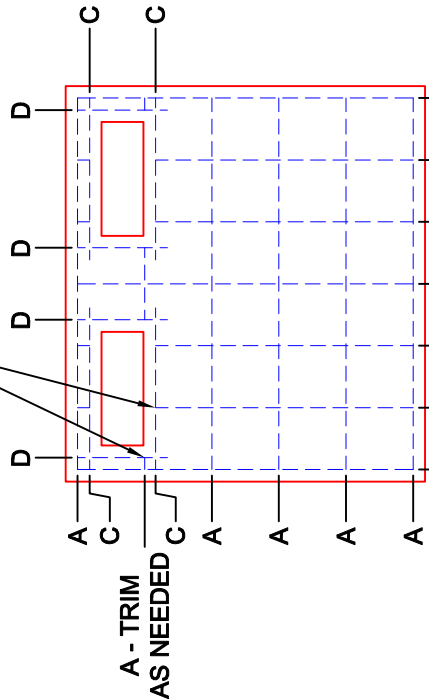
STATIONARY INFANTRY TARGET - SIT - 54" x 54"

- GENERAL NOTES:**
1. MANUFACTURED TO ASTM C-913 (LATEST REVISION).
 2. CONCRETE: 4,000 PSI AT 28 DAYS.
 3. REINFORCING: #5 BAR @ 12" C-C.E.W. SEE REINFORCEMENT CUT SHEET FOR ADDITIONAL INFORMATION.
 4. 1/2" CHAMFER ON ALL EXPOSED EDGES.
 5. WEIGHT:
 FIRST POUR - 1,860 LBS
 SECOND POUR - 1,115 LBS
 TOTAL - 2,975 LBS EACH
 6. 64 TOTAL REQUIRED

REINFORCEMENT CUT SHEET



TRIM BARS AS NEEDED FOR THE 18" X 6" ELECTRICAL OPENINGS



PLAN VIEW

FRONT VIEW

SECTION A-A