



**Structure ID: SIT - Stationary Infantry Target**

**P1 SIT**

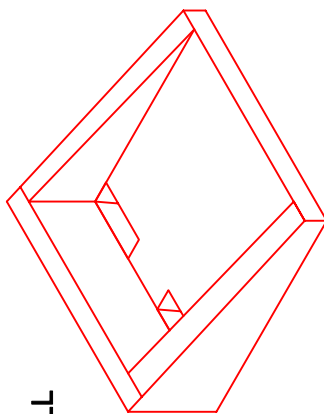
**STATIONARY INFANTRY TARGET - SIT - 54" x 54"**

**GENERAL NOTES:**

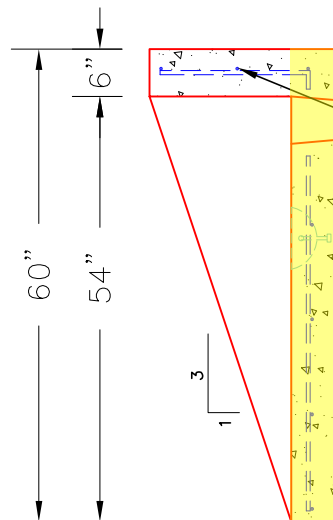
1. MANUFACTURED TO ASTM C-913 (LATEST REVISION).
2. CONCRETE: 4,000 PSI AT 28 DAYS.
3. REINFORCING: #5 BAR @ 12" C-C E.W. SEE REINFORCEMENT CUT SHEET FOR ADDITIONAL INFORMATION.
4. PER ASTM A615 (GRADE 60).
5. 1/2" CHAMFER ON ALL EXPOSED EDGES.
6. **FIRST POUR - 1,860 LBS**  
 SECOND POUR - 1,115 LBS  
 TOTAL - 2,975 LBS EACH  
 64 TOTAL REQUIRED

**FIRST POUR DRAWING**

1/2" CHAMFER ON ALL EXPOSED EDGES

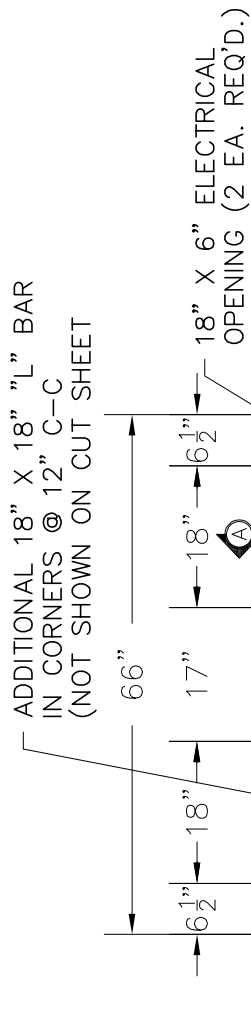


ISOMETRIC VIEW



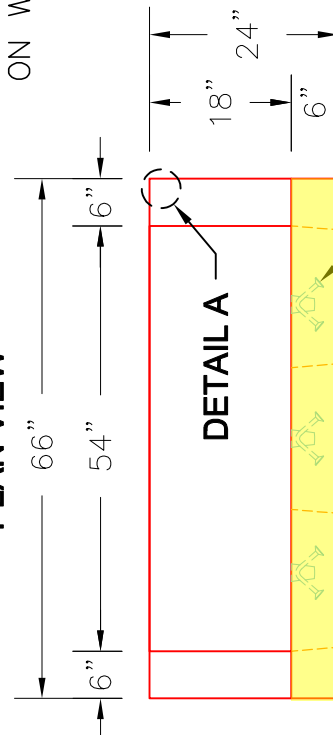
#4 BAR @ 9" C/C E.W. WITH 12" LAPS MINIMUM. (HORIZ. IN WALLS)

SECTION A-A



3:1 SLOPE ON WALLS

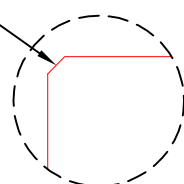
PLAN VIEW



FRONT VIEW

3 EA. CONAC 5CA14 UTILITY ANCHORS FOR HANDLING.

DETAIL A





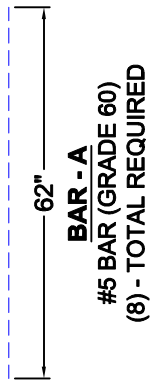
**Structure ID: SIT - Stationary Infantry Target**

**P1 SIT**

**STATIONARY INFANTRY TARGET - SIT - 54" x 54"**

- GENERAL NOTES:**
1. MANUFACTURED TO ASTM C-913 (LATEST REVISION).
  2. CONCRETE: 4,000 PSI AT 28 DAYS.
  3. REINFORCING: #5 BAR @ 12" C-C.E.W. SEE REINFORCEMENT CUT SHEET FOR ADDITIONAL INFORMATION.
  4. 1/2" CHAMFER ON ALL EXPOSED EDGES.
  5. WEIGHT:  
 FIRST POUR - 1,860 LBS  
 SECOND POUR - 1,115 LBS  
 TOTAL - 2,975 LBS EACH
  6. 64 TOTAL REQUIRED

**REINFORCEMENT CUT SHEET**



TRIM BARS AS NEEDED FOR THE 18" X 6" ELECTRICAL OPENINGS

