



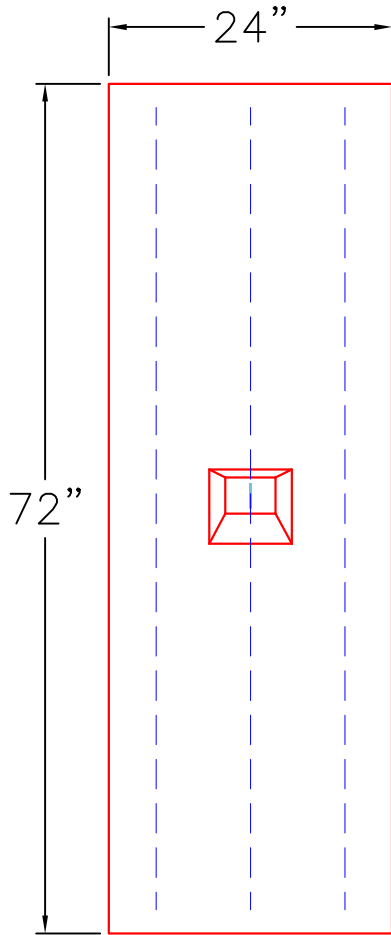
Structure ID: SAT-2 - SAT Down Range Power Center

P4 BLK24X24X72BS

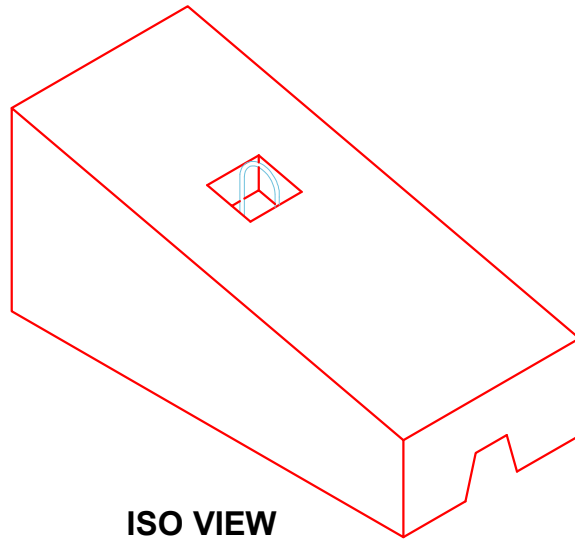
2' x 2' x 6' Bottom Sloped Block - 2' x 2' x 6' Bottom Sloped Block

GENERAL NOTES:

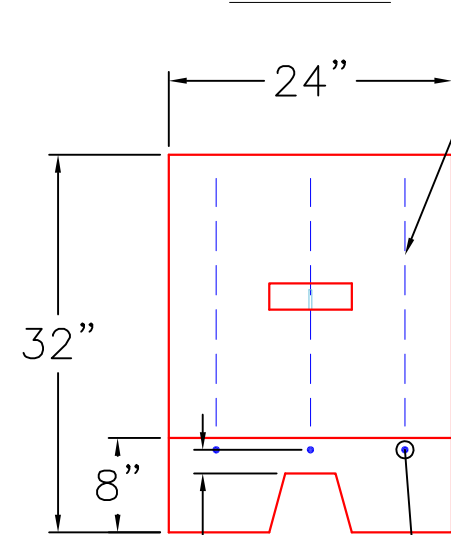
1. MANUFACTURED TO ASTM C-913 (LATEST REVISION).
2. CONCRETE: 4,000 PSI AT 28 DAYS.
3. REINFORCING: 6 X #5 BAR AS SHOWN BELOW. PER ASTM A615 (GRADE 60).
4. 1/2" CHAMFER ON ALL EXPOSED EDGES.
5. WEIGHT:
TOTAL - 2,970 LBS EACH
6. 4 TOTAL REQUIRED
7. 5,000 LBS LIFTING ANCHOR



TOP VIEW

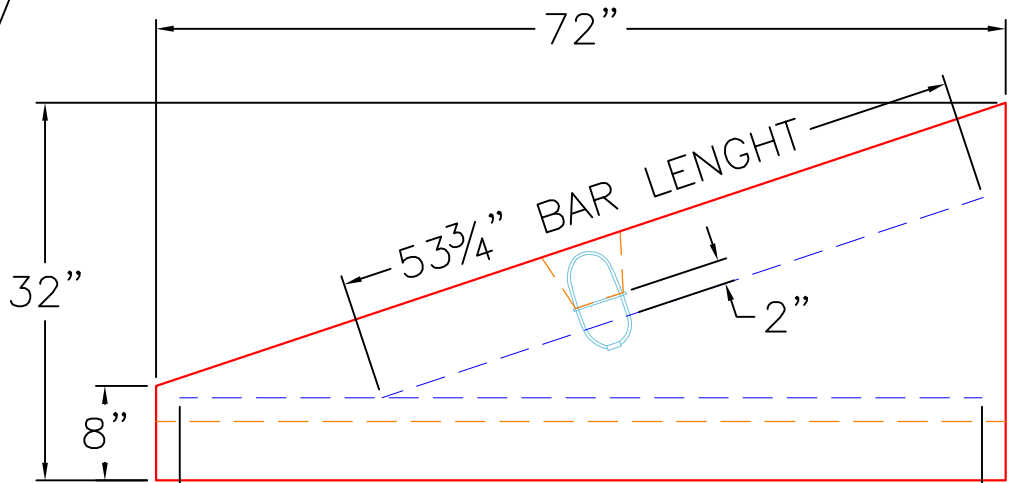


ISO VIEW



FRONT VIEW

3X #5 BAR @ 8" C-C



RIGHT SIDE

3X #5 BAR @ 8" C-C

2" CLR.
MIN.

32"

8"

53 3/4" BAR LENGTH

2"

68" BAR LENGTH

72"

24"

32"

8"