



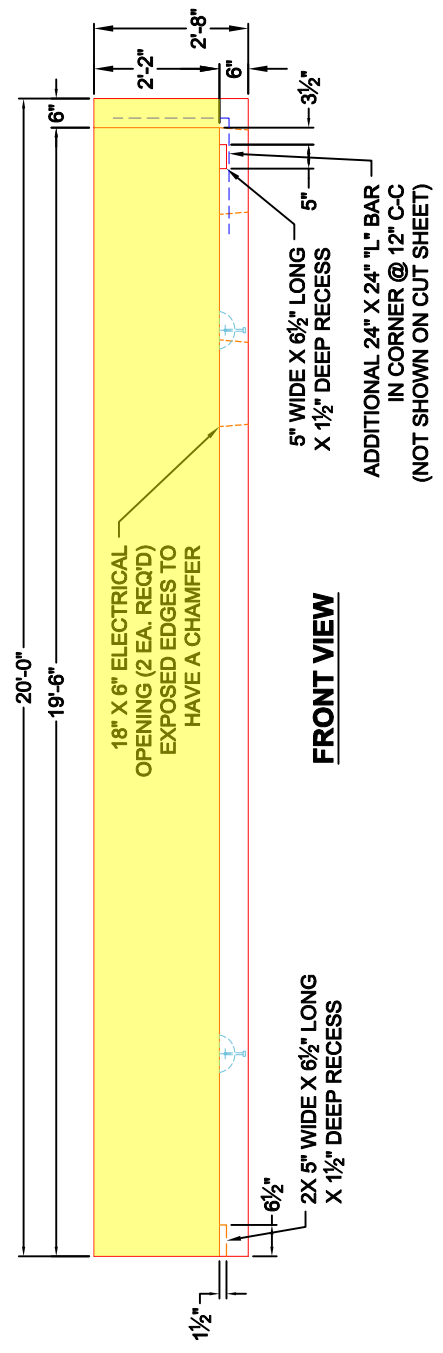
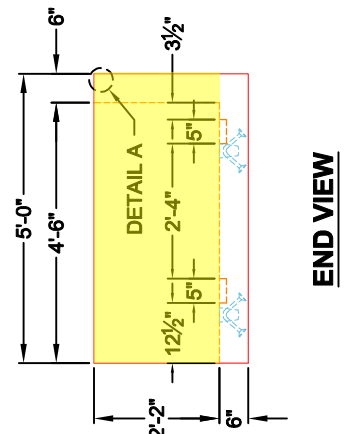
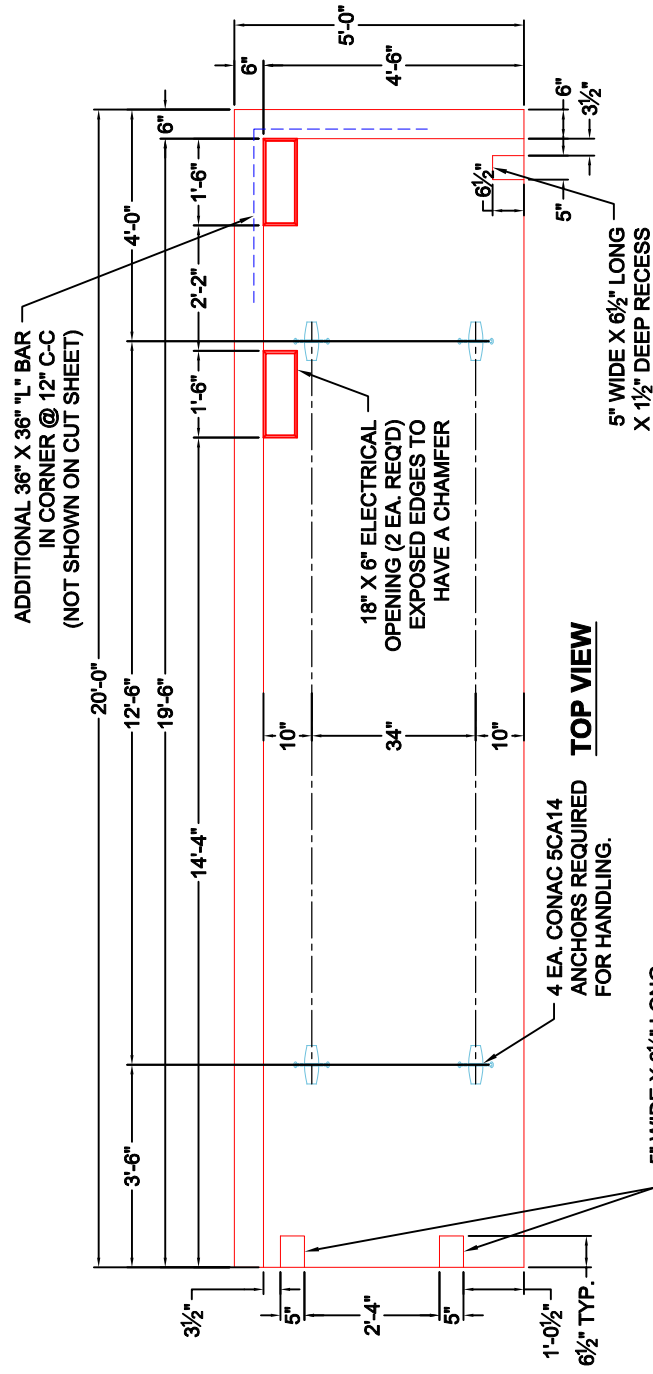
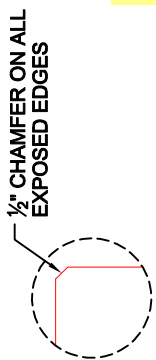
Structure ID: MIT-R - MIT Modular Wall/Footing Right

P2 CVBS

32" x 240" MIT Section B - 32" x 240" MIT Section B - 32" x 234"

- GENERAL NOTES:**
1. MANUFACTURED TO ASTM C-913 (LATEST REVISION).
 2. CONCRETE: 4,000 PSI AT 28 DAYS.
 3. REINFORCING: #5 BAR @ 12" C-C E.W. SEE REINFORCEMENT CUT SHEET FOR ADDITIONAL INFORMATION.
 4. 1/2" CHAMFER ON ALL EXPOSED EDGES.
 5. WEIGHT:
 FIRST POUR - 7,250 LBS
 SECOND POUR - 3,849 LBS
 TOTAL - 11,099 LBS EACH
 6. 48 TOTAL REQUIRED

SECOND POUR DRAWING





Structure ID: MIT-R - MIT Modular Wall/Footing Right

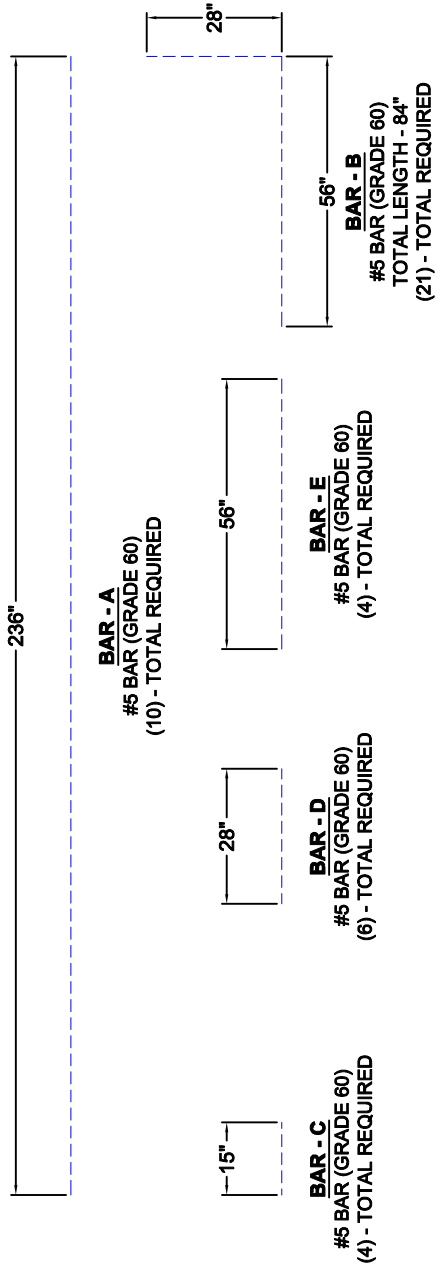
P2 CVBS

32" x 240" MIT Section B - 32" x 240" MIT Section B - 32" x 234"

GENERAL NOTES:

1. MANUFACTURED TO ASTM C-913 (LATEST REVISION).
2. CONCRETE: 4,000 PSI AT 28 DAYS.
3. REINFORCING: #5 BAR @ 12" C-C E.W. SEE REINFORCEMENT CUT SHEET FOR ADDITIONAL INFORMATION.
4. PER ASTM A615 (GRADE 60).
5. 1/2" CHAMFER ON ALL EXPOSED EDGES. WEIGHT:
6. FIRST POUR - 7,250 LBS
 SECOND POUR - 3,849 LBS
 TOTAL - 11,099 LBS EACH
 48 TOTAL REQUIRED

REINFORCEMENT CUT SHEET



TRIM BARS AS NEEDED FOR THE 18" X 6" ELECTRICAL OPENINGS

TRIM BARS AS NEEDED FOR THE 18" X 6" ELECTRICAL OPENINGS

