



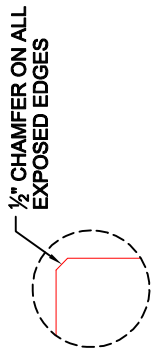
Structure ID: MIT-L - MIT Modular Wall/Footing Left

P3 CVBS

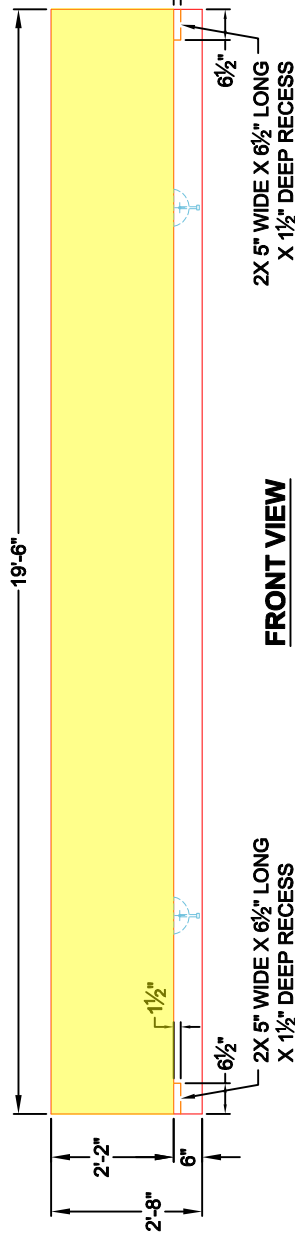
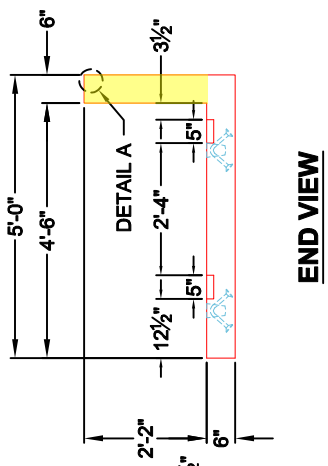
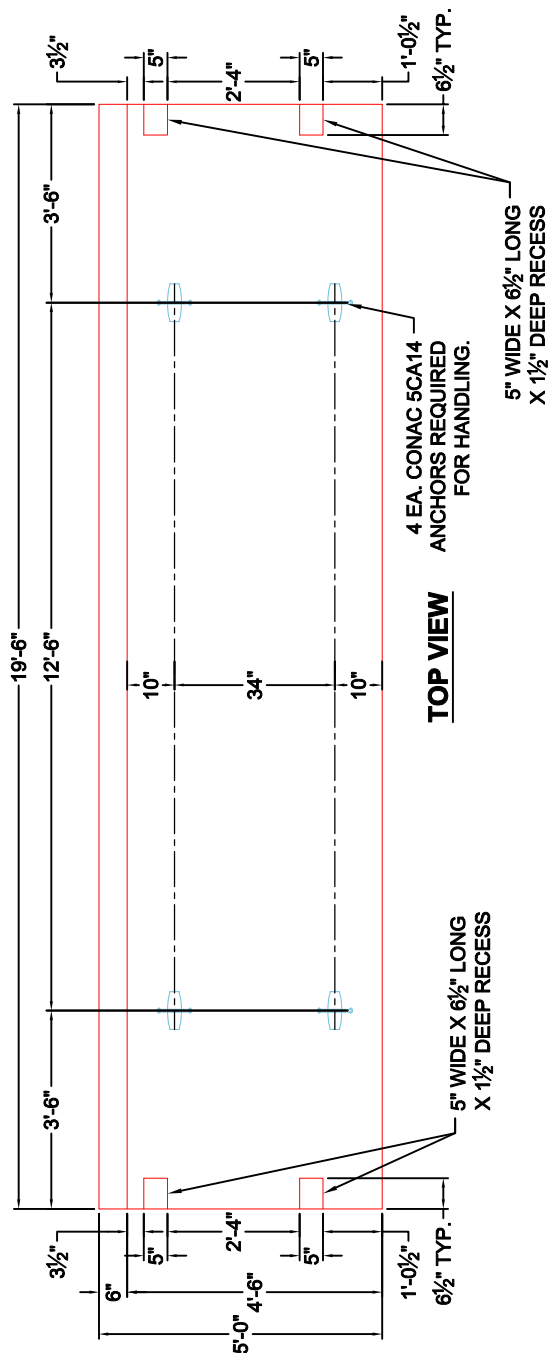
32" x 234" MIT Section C - 32" x 234" MIT Section C - 32" x 234"

- GENERAL NOTES:**
1. MANUFACTURED TO ASTM C-913 (LATEST REVISION).
 2. CONCRETE: 4,000 PSI AT 28 DAYS.
 3. REINFORCING: #5 BAR @ 12" C-C E.W. SEE REINFORCEMENT CUT SHEET FOR ADDITIONAL INFORMATION.
 4. PER ASTM A615 (GRADE 60).
 5. 1/2" CHAMFER ON ALL EXPOSED EDGES. WEIGHT:
FIRST POUR - 7,069 LBS
SECOND POUR - 3,054 LBS
 TOTAL - 10,123 LBS EACH
 96 TOTAL REQUIRED
 - 6.

SECOND POUR DRAWING



DETAIL A





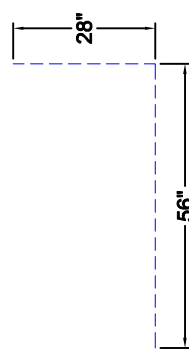
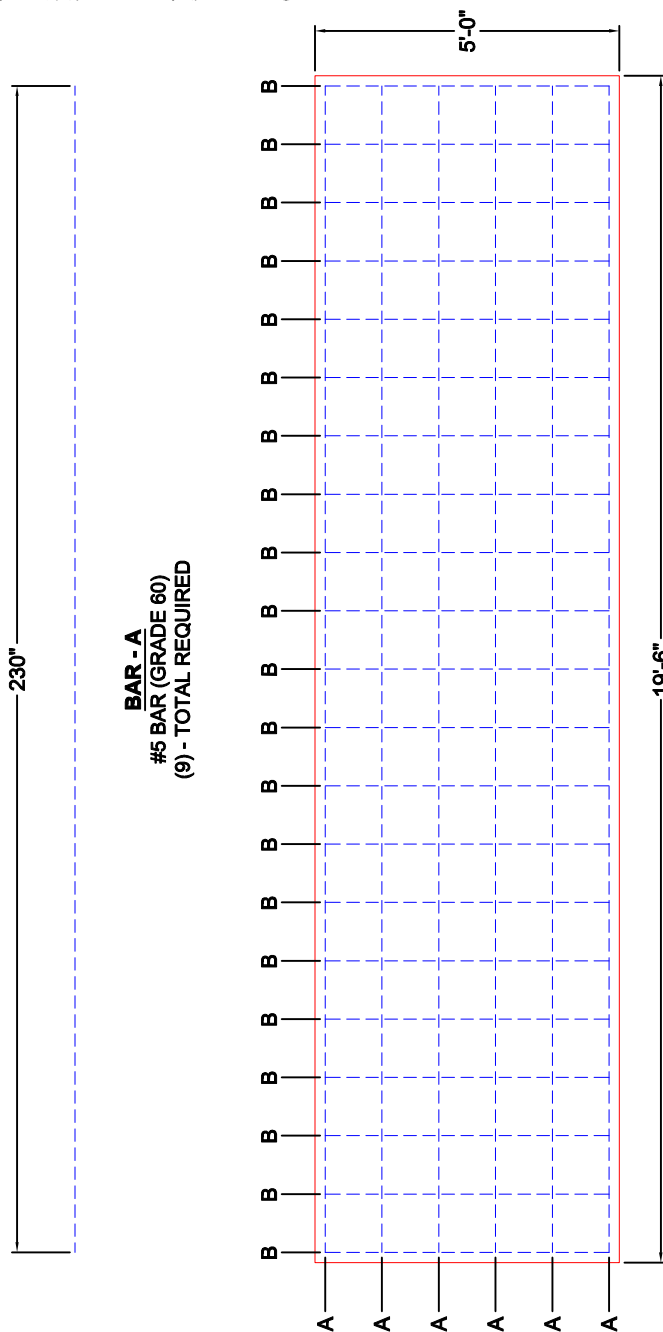
Structure ID: MIT-L - MIT Modular Wall/Footing Left

P3 CVBS

32" x 234" MIT Section C - 32" x 234" MIT Section C - 32" x 234"

REINFORCEMENT CUT SHEET

- GENERAL NOTES:**
1. MANUFACTURED TO ASTM C-913 (LATEST REVISION).
 2. CONCRETE: 4,000 PSI AT 28 DAYS.
 3. REINFORCING: #5 BAR @ 12" C-C E.W. SEE REINFORCEMENT CUT SHEET FOR ADDITIONAL INFORMATION.
 4. 1/2" CHAMFER ON ALL EXPOSED EDGES.
 5. WEIGHT:
 FIRST POUR - 7,069 LBS
 SECOND POUR - 3,054 LBS
 TOTAL - 10,123 LBS EACH
 6. 96 TOTAL REQUIRED



BAR - B
 #5 BAR (GRADE 60)
 TOTAL LENGTH - 84"
 (21) - TOTAL REQUIRED

