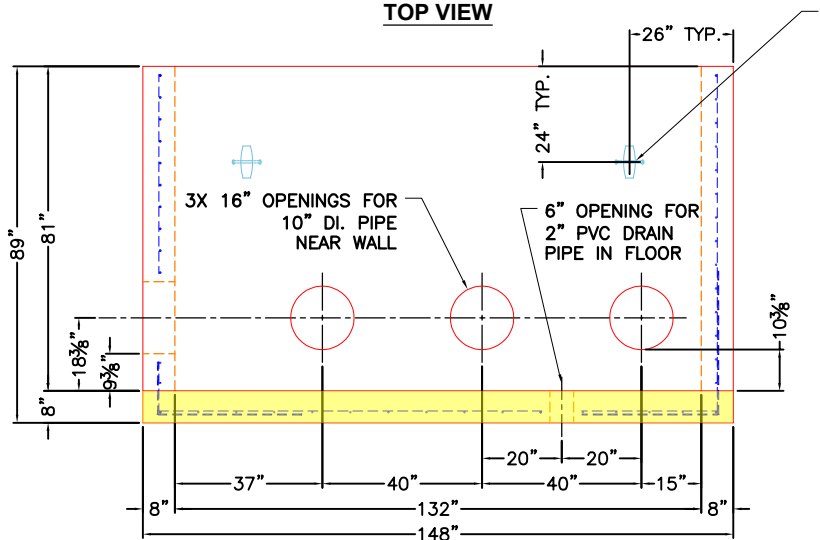


**TOP VIEW**

**GENERAL NOTES:**

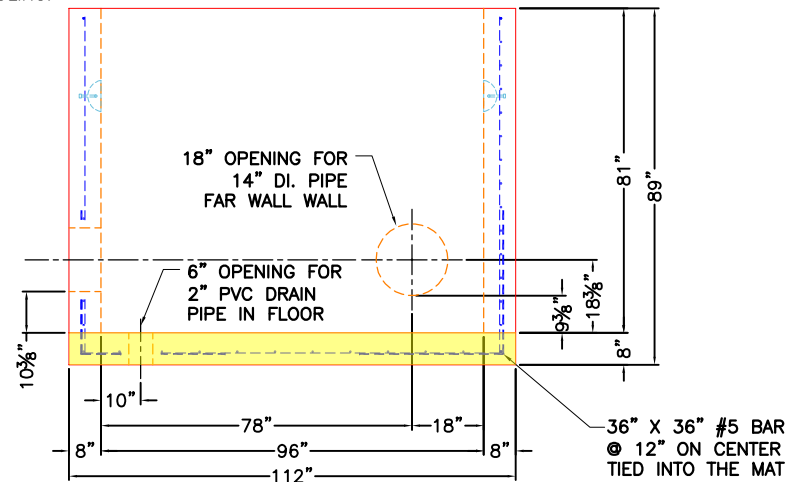
1. MANUFACTURED TO ASTM C-913 (LATEST REVISION).
2. CONCRETE: 5,000 PSI AT 28 DAYS.
3. REINFORCING:  
 WALLS  
 HORIZONTALS - #5 BAR @ 6" C-C  
 VERTICALS - #4 BAR @ 12" C-C  
 FLOOR  
 LONG WAY - #4 BAR @ 12" C-C  
 SHORT WAY - #5 BAR @ 10" C-C  
 PER ASTM A615 (GRADE 60).
4. WEIGHTS:  
 FIRST POUR = 11,127 LBS  
 SECOND POUR = 26,535 LBS  
 TOTAL = 37,662 LBS

**FIRST POUR DRAWING**



**FRONT VIEW**

4. EA CONAC 8CA18 ANCHORS REQUIRED FOR HANDLING.



**RIGHT VIEW**

**PRODUCTION WORK ORDER**

PRODUCT I.D.: BX096132-08BAVF

DESCRIPTION: 96" X 132" X 81" TALL VAULT BASE



QUALITY CONTROL CHECKLIST

- ALL DIMENSIONS CORRECT.
- LIFTERS INSTALLED.
- OPENING CENTERED.
- REINFORCING CORRECT.
- SURFACE QUALITY ACCEPTABLE.
- EDGES CHAMFERED.
- ALL PATCHWORK ACCEPTABLE.

PRODUCT VIEW: RIGHT SIDE UP

CUSTOMER: W&O CONSTRUCTION

PLANT: BEAVER DAM, KY.

PROJECT: THOMPSON'S STATION WWTP (PH. 2)

WEIGHT: 37,662 LBS.

STRUCTURE: VALVE VAULT

TOP SECTION JOINT: N/A

ORDER NO: 25-1026

BASE SECTION JOINT: N/A

PC: A. CHAMBERS

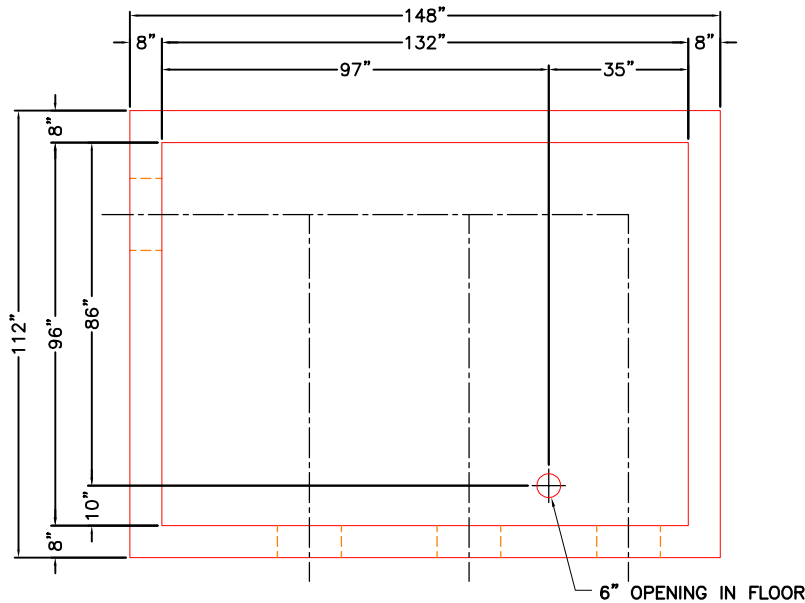
DRAWING: J. COPPAGE

QC CHECK INITIALS:

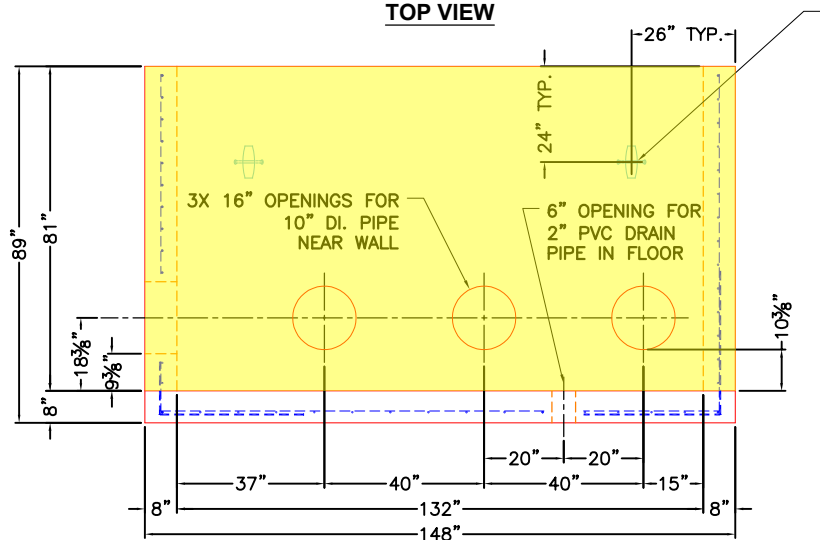
DATE: 10/20/25

SCALE: NTS

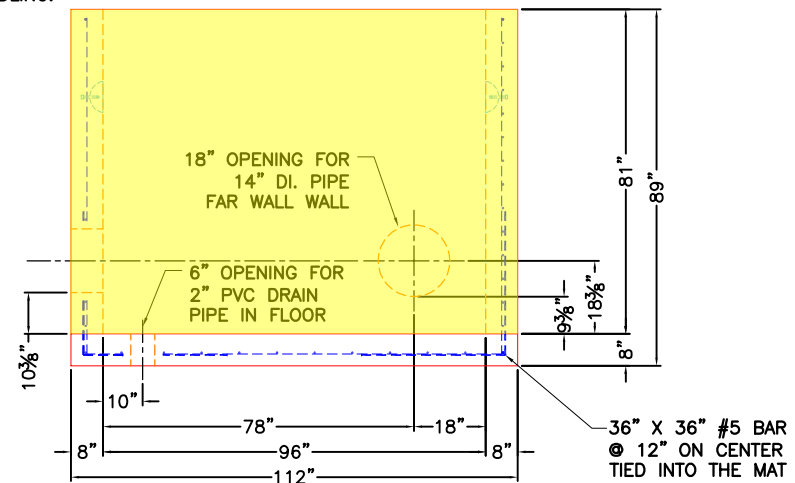
PG. 1 of 1



TOP VIEW



FRONT VIEW



RIGHT VIEW

GENERAL NOTES:

1. MANUFACTURED TO ASTM C-913 (LATEST REVISION).
2. CONCRETE: 5,000 PSI AT 28 DAYS.
3. REINFORCING:  
 WALLS  
 HORIZONTALS - #5 BAR @ 6" C-C  
 VERTICALS - #4 BAR @ 12" C-C  
 FLOOR  
 LONG WAY - #4 BAR @ 12" C-C  
 SHORT WAY - #5 BAR @ 10" C-C  
 PER ASTM A615 (GRADE 60).
4. WEIGHTS:  
 FIRST POUR = 11,127 LBS  
**SECOND POUR = 26,535 LBS**  
 TOTAL = 37,662 LBS

SECOND POUR DRAWING

PRODUCTION WORK ORDER

PRODUCT I.D.: BX096132-08BAVF

DESCRIPTION: 96" X 132" X 81" TALL VAULT BASE



QUALITY CONTROL CHECKLIST

- ALL DIMENSIONS CORRECT.
- LIFTERS INSTALLED.
- OPENING CENTERED.
- REINFORCING CORRECT.
- SURFACE QUALITY ACCEPTABLE.
- EDGES CHAMFERED.
- ALL PATCHWORK ACCEPTABLE.

PRODUCT VIEW: RIGHT SIDE UP

CUSTOMER: W&O CONSTRUCTION

PLANT: BEAVER DAM, KY.

PROJECT: THOMPSON'S STATION WWTP (PH. 2)

WEIGHT: 37,662 LBS.

STRUCTURE: VALVE VAULT

TOP SECTION JOINT: N/A

ORDER NO: 25-1026

BASE SECTION JOINT: N/A

PC: A. CHAMBERS

DRAWING: J. COPPAGE

QC CHECK INITIALS:

DATE: 10/20/25

SCALE: NTS

PG. 1 of 1