

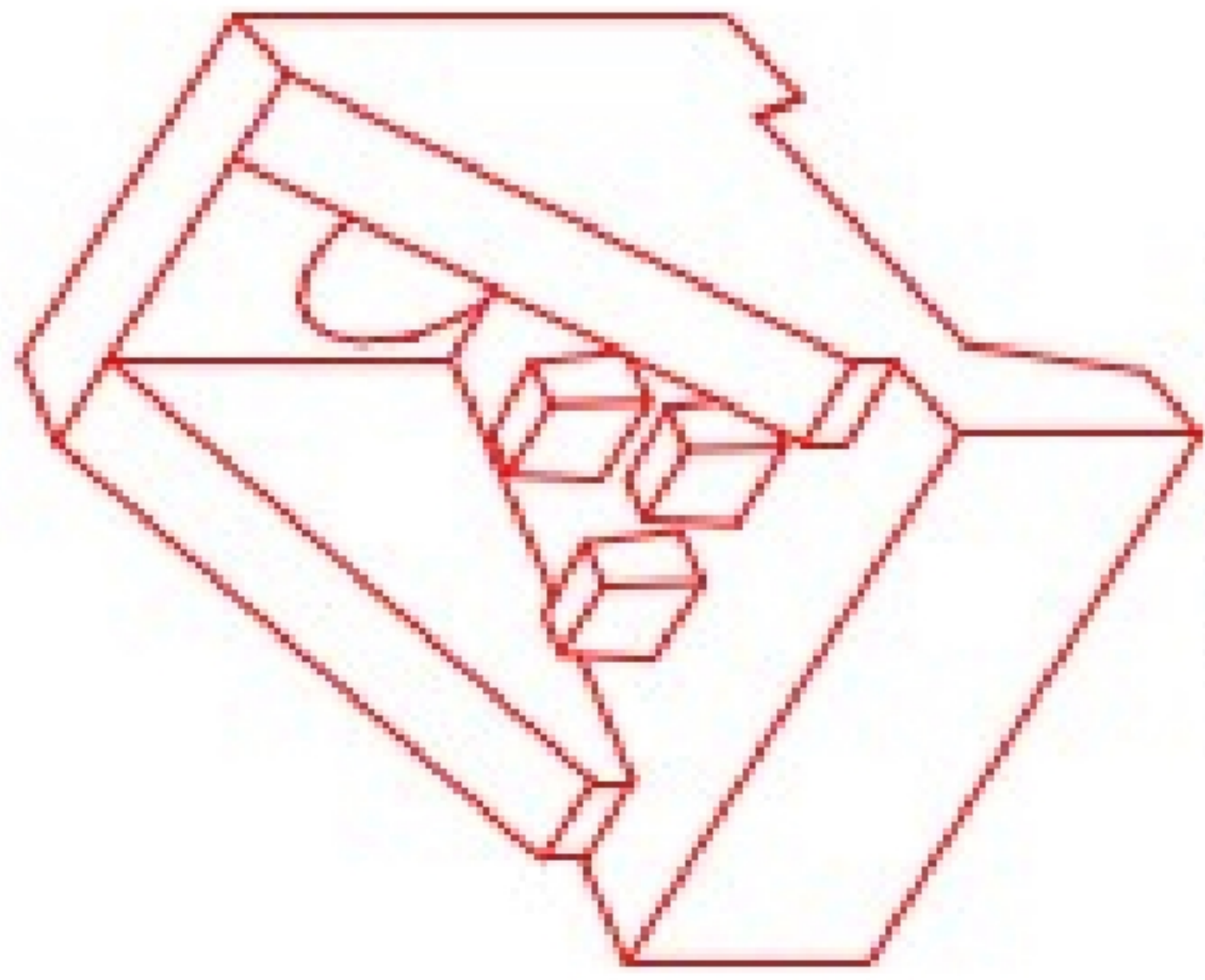


Structure ID: L (HWSF-diss 24in)

P1 HWSF24D

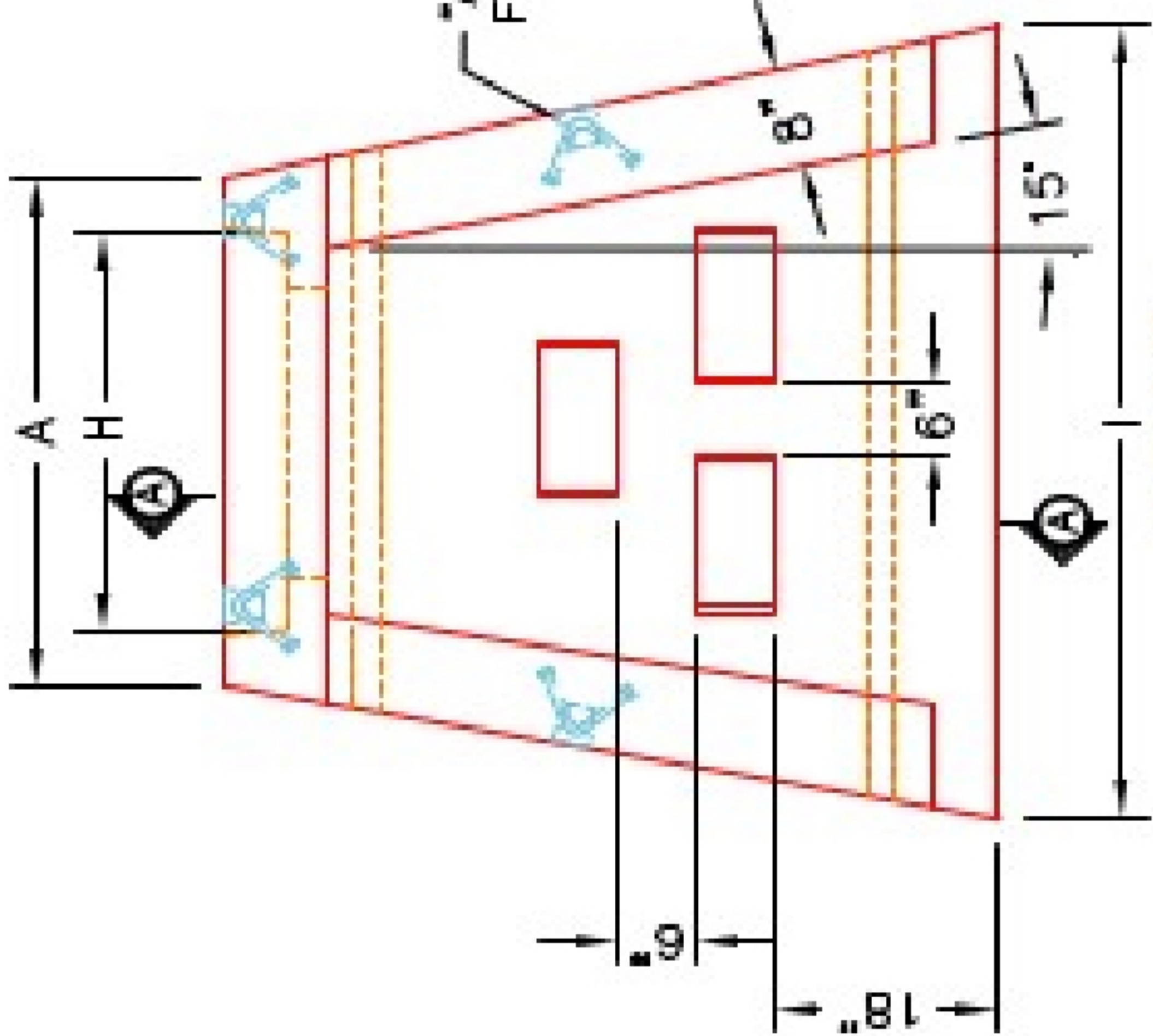
24" - SLOPED & FLARED HEADWALL W/DISS F/F

DIMENSIONS											
PIPE Ø	A	B	C	D	E	F	G	H	I	WEIGHT	DISSIPATORS
24"	3'-8"	4'-4"	2'-10"	1'-6"	5'-0"	4"	3'±	2'-10"	6'-0"	5,127 LBS.	3 EA.



ISOMETRIC VIEW
24" HEADWALL

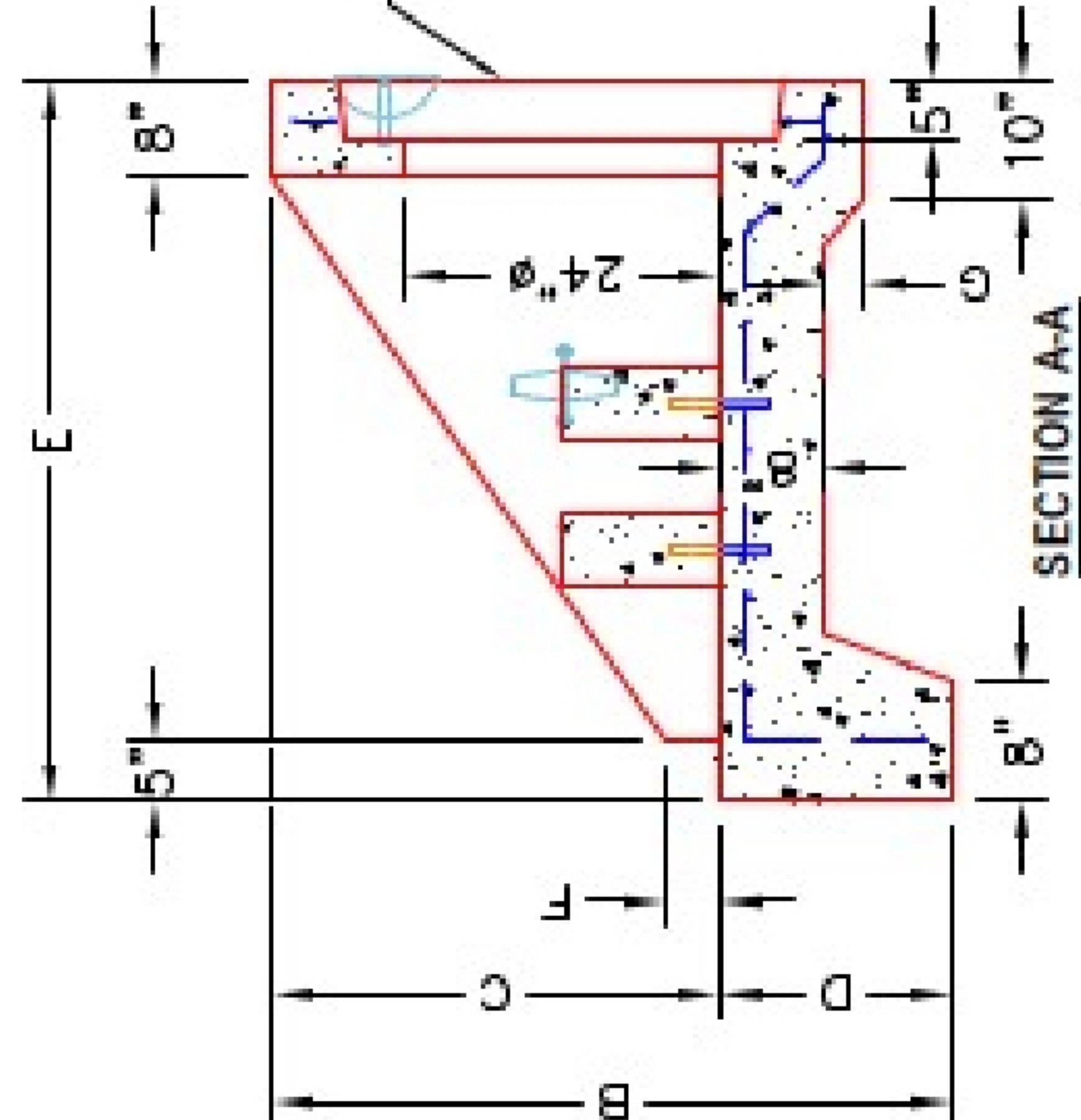
"A-ANCHOR" LIFTING SYSTEM FOR PLANT & FIELD HANDLING.



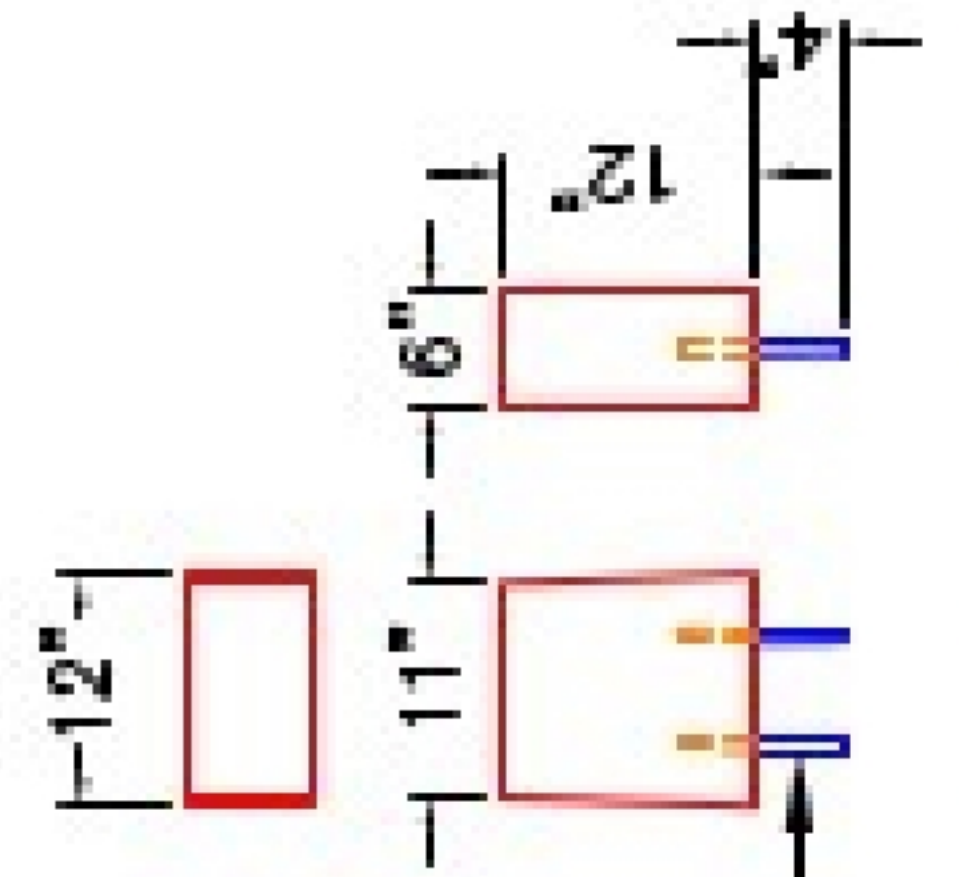
PLAN VIEW

12"x12"x6" ENERGY DISSIPATOR BLOCKS (3 EA.).

24"Ø TO 34"Ø STEPPED HOLE FORMER FOR 24"Ø PIPE. 24"Ø TO BE FLUSH WITH FLOOR.



SECTION A-A



DISSIPATOR BLOCK DETAIL

2-#5 BAR STUBS FOR POST MOUNTING TO HEADWALL FLOOR.

FRONT ELEVATION

- NOTES:**
1. CONCRETE: 4500 PSI @ 28 DAYS.
 2. REINFORCING: #4 BAR @ 12" C/C E.W.-GRADE 60. (WITH 2" CONCRETE COVER MINIMUM)
 3. REINFORCING BARS TO BE TACK WELDED OR TIED.
 4. DRAWING TO BE USED IN CONJUNCTION WITH KYTC STD. DRAWING RDH-020-03 AND THE STANDARD SPECIFICATIONS FOR ROAD AND BRIDGE CONSTRUCTION.
 5. CHAMFER ON ALL EXPOSED EDGES.

PRODUCTION WORK ORDER		PRODUCT I.D.: HWSF24D		DESCRIPTION: KYTC 24"Ø SLOPED & FLARED HEADWALL W/DISSIPATORS	
QUALITY CONTROL CHECKLIST		CUSTOMER: STDCO		PROJECT: STOCK INVENTORY	
<input type="checkbox"/> ALL DIMENSIONS CORRECT. <input type="checkbox"/> LIFTERS INSTALLED. <input type="checkbox"/> STEPPED HF CORRECT SIZE. <input type="checkbox"/> REINFORCING CORRECT. <input type="checkbox"/> DISSIPATOR BLOCK INSTALLED. <input type="checkbox"/> EDGES CHAMFERED. <input type="checkbox"/> ALL PATCHWORK ACCEPTABLE.		PLANT: BEAVER DAM, KY.		STRUCTURE ID.: N/A	
		WEIGHT: 5,127 LBS.		QUOTE/SALES ORDER NO: N/A	
		TOP SECTION JOINT: N/A		CHECK: J.H. ROSS, PE	
		BASE SECTION JOINT: N/A		DRAWING: N. RICHARDS	
		QC CHECK INITIALS:		DATE: 09/08/22	
		SCALE: NTS		PG. 1 of 1	

