

Job Name: 25-1008D - MSU Science & Engineering Bldg
 Job Location: Morehead, KY
 Contractor: Lagco Inc.

Plant: 100

2/27/2026 6:56:22 AM

Tech: J. Horsley

PC: C. Goff



Structure ID: K3-2 ST-MH

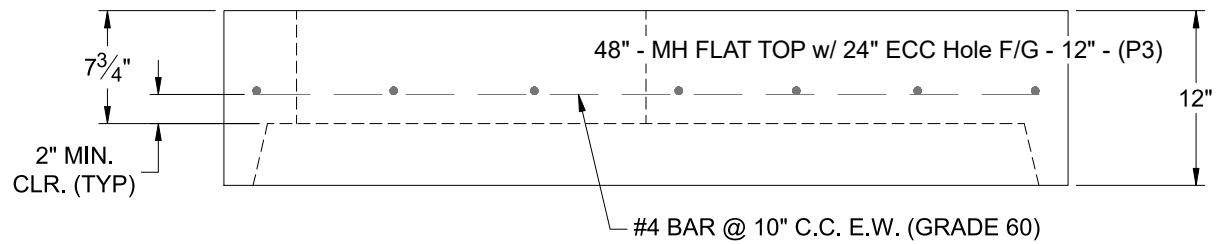
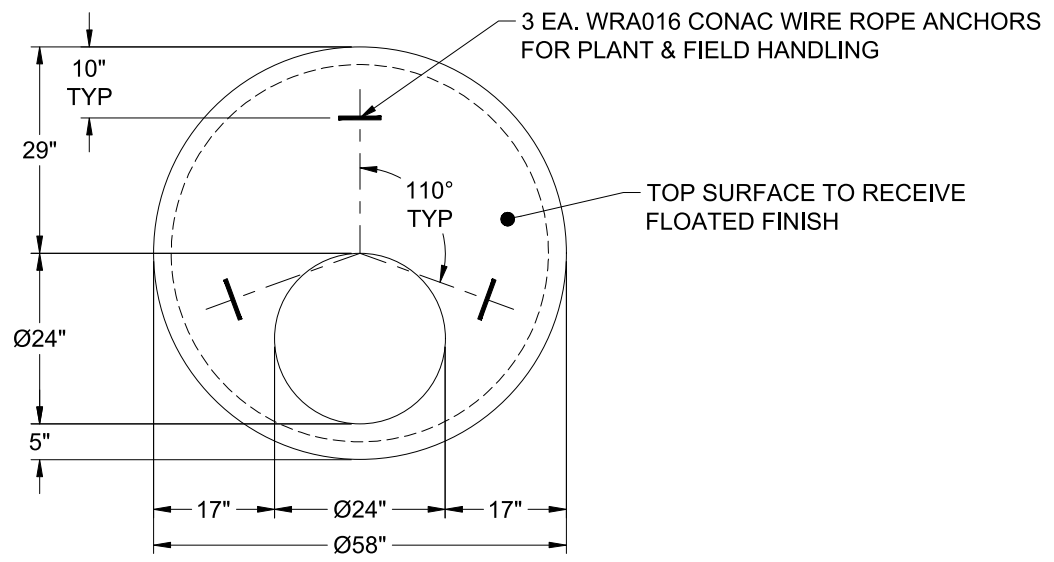
P3 MH048LD12ECC

MH FLAT TOP w/ 24" ECC Hole F/G

- P5) 24" - CASTING HEIGHT - 7"
- P4) 24" - GRADE RING F/F - 4"
- P3) 48" - MH FLAT TOP w/ 24" ECC Hole F/G - 12"
- P2) 48" - MH RISER SPECIAL T/G - 48"
- P1) 48" - MH BASE T/n - 36"
- 1) CASTING - HOE MC-315 F/C Storm
- 1) 48" - Conseal CS-102 1.00"
- 2) Hole - 16
- 7) MH Step ML-10-TDS-NCR - 10"

	0 lb
	270 lb
	1561 lb
	3267 lb
	3759 lb
	258 lb
	0 lb
	0 lb
	0 lb
Structure Total:	9116 lb

- Structure Notes:
1. PER ASTM C-478 SPECIFICATIONS
 2. CONCRETE: 4,000 PSI AT 28 DAYS
 3. REINFORCEMENT: #4 BAR @ 10" C.C. E.W. (GRADE 60) - 2" MIN. REBAR CLEARANCE (TYP)
 4. HOE MC-315 FRAME & COVER "STORM" SUPPLIED BY ICAST
 5. LIFTERS: 3 EA. WRA016 CONAC WIRE ROPE ANCHORS FOR PLANT & FIELD HANDLING
 6. TOP SURFACE TO RECEIVE FLOATED FINISH



Coating (Int): Coating (Ext):	Seam Up: Flat Seam Dn: Groove	Wall Thickness: 5"	Height (Ext): 12"	Weight (Net): 1561 lb Volume (Net): 0.42cu.yd
----------------------------------	----------------------------------	--------------------	-------------------	--