

Job Name: 25-1008D - MSU Science & Engineering Bldg Job Location: Morehead, KY Contractor: Lagco Inc.	Plant: 100	Tech: J. Horsley	
	2/27/2026 6:55:03 AM	PC: C. Goff	

Structure ID: K3-2 ST-MH

P2 MH048RS48S

MH RISER SPECIAL T/G

P5) 24" - CASTING HEIGHT - 7"	0 lb
P4) 24" - GRADE RING F/F - 4"	270 lb
P3) 48" - MH FLAT TOP w/ 24" ECC Hole F/G - 12"	1561 lb
P2) 48" - MH RISER SPECIAL T/G - 48"	3267 lb
P1) 48" - MH BASE T/n - 36"	3759 lb
1) CASTING - HOE MC-315 F/C Storm	258 lb
1) 48" - Conseal CS-102 1.00"	0 lb
2) Hole - 16	0 lb
7) MH Step ML-10-TDS-NCR - 10"	0 lb
Structure Total:	9116 lb

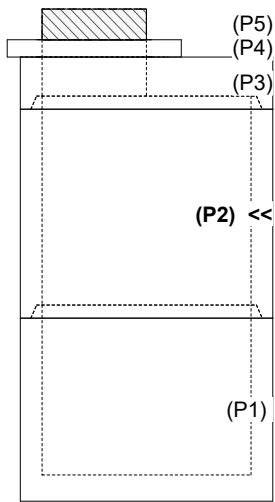
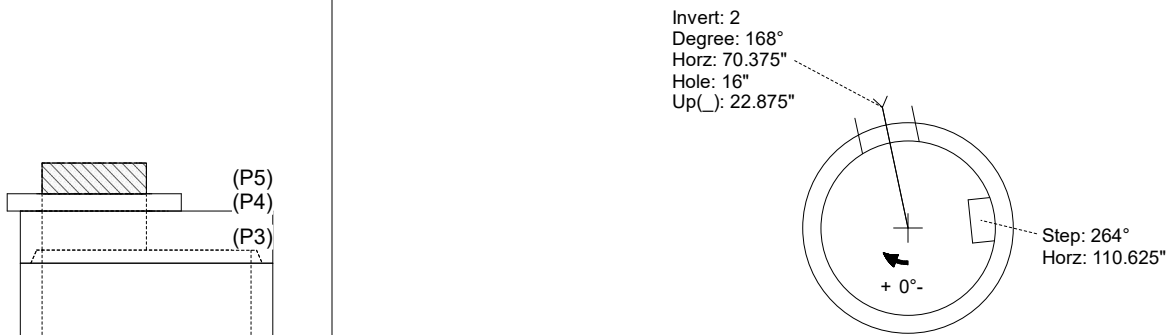
Structure Notes:

1. PER ASTM C-478 SPECIFICATIONS
2. CONCRETE: 4,000 PSI AT 28 DAYS
3. REINFORCEMENT: PER ASTM A615
4. STEPS AT 264 DEGREES
5. HOE MC-315 FRAME & COVER "STORM" SUPPLIED BY ICAST

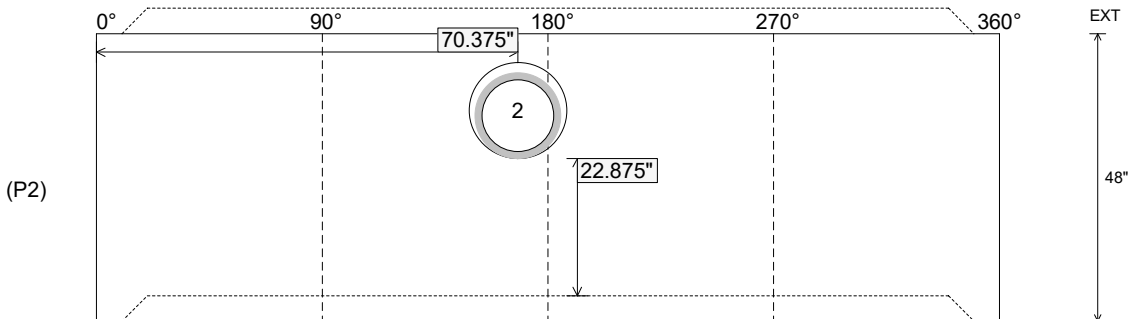
Rim: 755'	Rim to Invert: 9'	Slack: 1"	Sump: 0"	Step Position: 264°
-----------	-------------------	-----------	----------	---------------------

Position	Elev	Angle	Ext. (cw)	Pipe	Pipe OD	Connector	Hole	Horz Size	Up (⌋)	Offset
Invert 1										
Invert 2	751.36'	168°	85"	12" VCP	14.32"	Hole 16	16"	16.312"	22.875"	0"
Invert 3										
Invert 4										
Invert 5										
Invert 6										
Invert 7										
Invert 8										

RIGHT-SIDE UP VIEW (int. dimensions)



INSIDE WALL DIMENSIONS



Coating (Int): Coating (Ext):	Seam Up: Tongue Seam Dn: Groove	Wall Thickness: 5" Floor Height: 0"	Height (Int): 48" Height (Ext): 48"	Weight (Net): 3267 lb Volume (Net): 0.84cu.yd
----------------------------------	------------------------------------	--	--	--