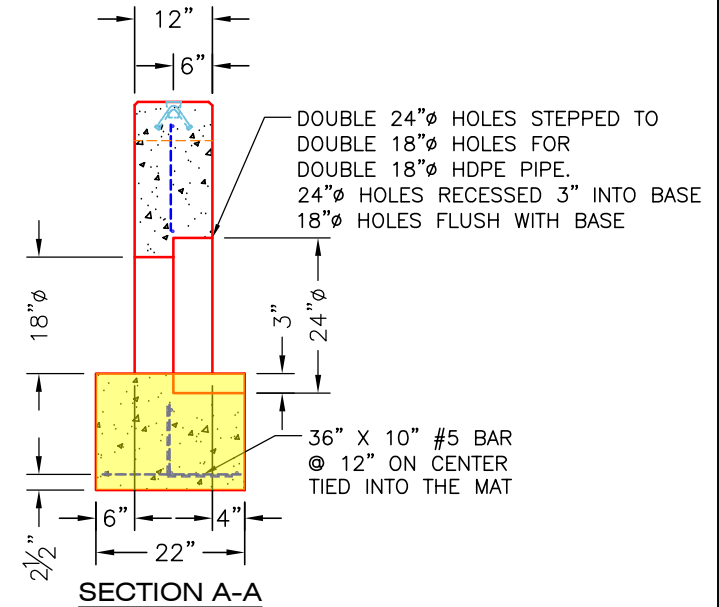
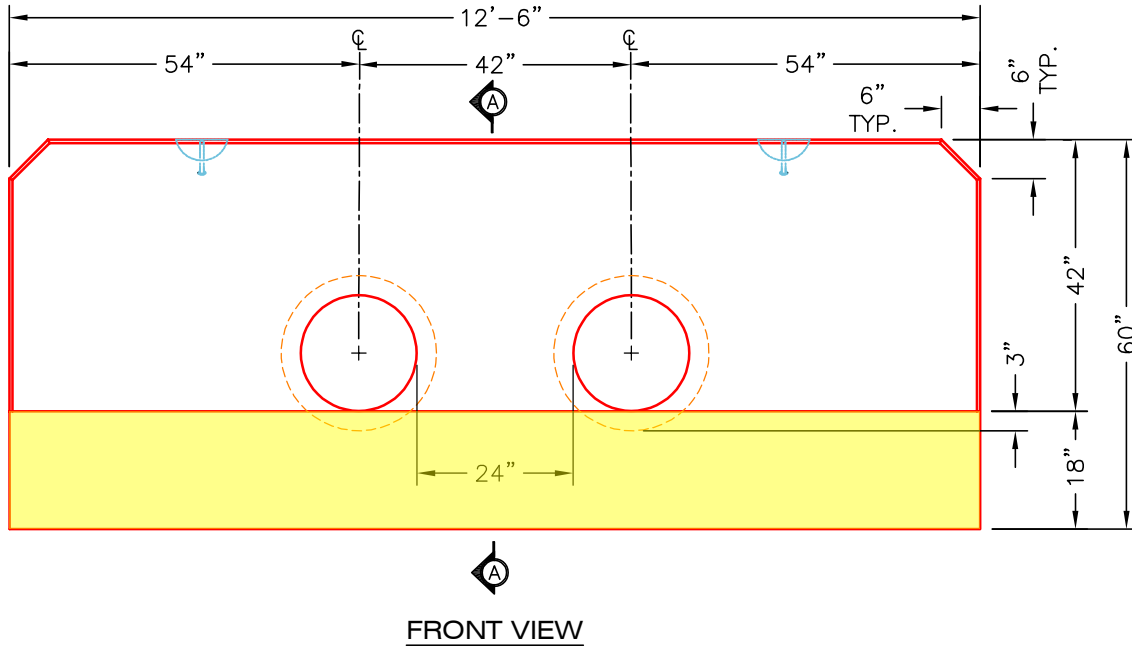
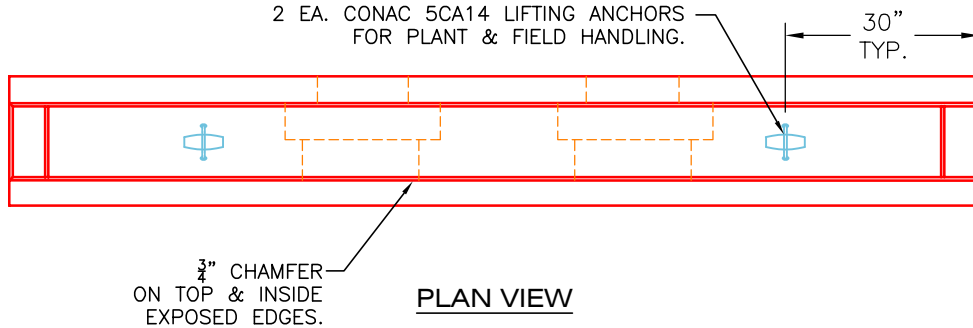


**\*\*24" DOUBLE HEADWALL MODIFIED FOR 18" PIPE\*\***



**NOTES:**

1. CONCRETE: KYTC APPROVED.
2. REINFORCING: #5 BAR @ 12" C/C E.W.-GRADE 60, (WITH 2" CONCRETE COVER MINIMUM)
3. REINFORCING BARS TO BE TACK WELDED OR TIED.
4. WEIGHT: 10,780 LBS EACH.
5. TWO TOTAL REQUIRED.
6. PIPE AND LIFTING ANCHOR POCKETS TO BE GROUTED WITH KYTC APPROVED NON-SHRINK GROUT.
7. DRAWING TO BE USED IN CONJUNCTION WITH KYTC STD. DRAWING RDH-500-03 AND THE STANDARD SPECIFICATIONS FOR ROAD AND BRIDGE CONSTRUCTION.
8. 3/4" CHAMFER ON ALL EXPOSED EDGES.
9. PREFORMED STEPPED HOLE SIZED AS PER O.D. OF PIPE + 3"-4".

**FIRST POUR DRAWING**  
**FIRST POUR - 4,984 LBS.**  
**SECOND POUR - 5796 LBS.**  
**TOTAL - 10,780 LBS.**

**PRODUCTION WORK ORDER**



**QUALITY CONTROL CHECKLIST**

- ALL DIMENSIONS CORRECT.
- LIFTERS INSTALLED.
- STEPPED HF'S CORRECT SIZE.
- REINFORCING CORRECT.
- CLEARANCE ON REINFORCING CORRECT.
- EDGES CHAMFERED.
- FORM FINISH ON EXPOSED FACE.

PRODUCT I.D.: HWKYTC-STD24D

PRODUCT VIEW: RIGHT SIDE UP

PLANT: BEAVER DAM, KY.

WEIGHT: 10,780 LBS.

TOP SECTION JOINT: N/A

BASE SECTION JOINT: N/A

QC CHECK INITIALS:

DESCRIPTION: KYTC STD. DBL 24"Ø STR. HW FOR 18"Ø PIPE

CUSTOMER: WINWATER HARTFORD KY CO.

PROJECT: WEIRS CREEK SUBDIVISION

STRUCTURE ID.: 18IN DBL STRAIGHT HW 1

SALES ORDER NO: 25-0232

P.C.: A. CHAMBERS

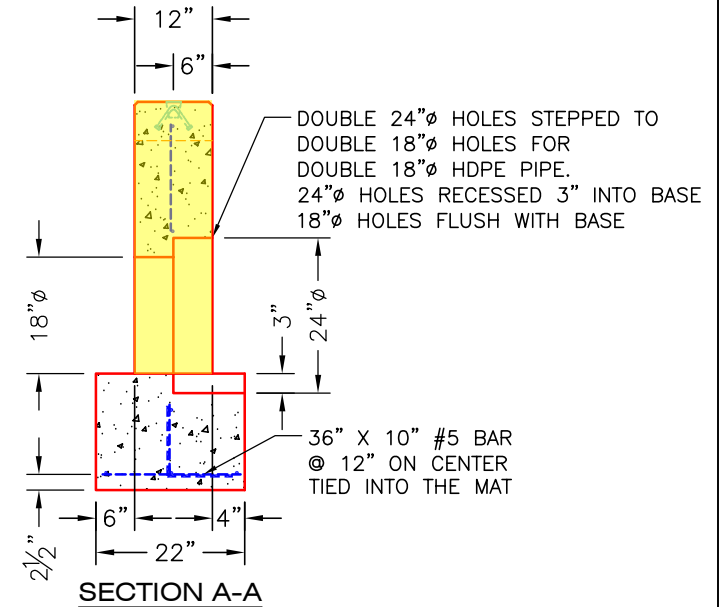
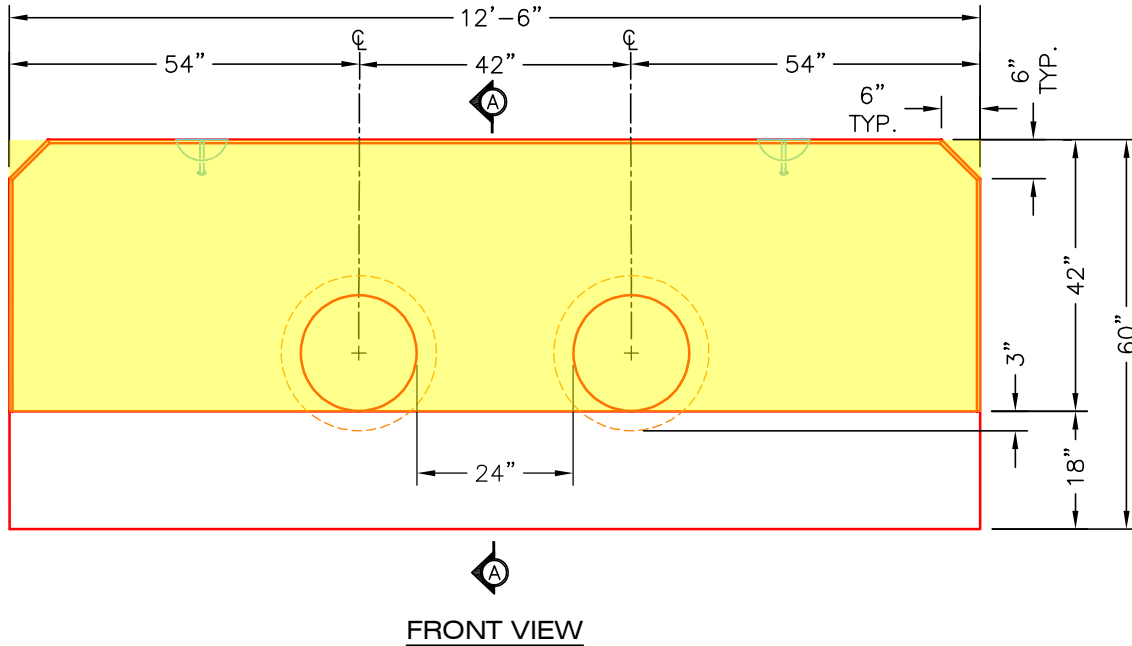
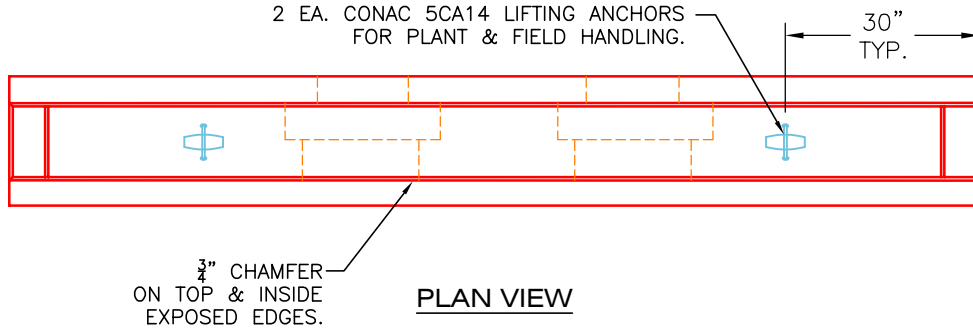
DRAWING: J. COPPAGE

DATE: 10/15/25

SCALE: NTS

PG. 1 of 1

**\*\*24" DOUBLE HEADWALL MODIFIED FOR 18" PIPE\*\***



**NOTES:**

1. CONCRETE: KYTC APPROVED.
2. REINFORCING: #5 BAR @ 12" C/C E.W.-GRADE 60, (WITH 2" CONCRETE COVER MINIMUM)
3. REINFORCING BARS TO BE TACK WELDED OR TIED.
4. WEIGHT: 10,780 LBS EACH.
5. TWO TOTAL REQUIRED.
6. PIPE AND LIFTING ANCHOR POCKETS TO BE GROUTED WITH KYTC APPROVED NON-SHRINK GROUT.
7. DRAWING TO BE USED IN CONJUNCTION WITH KYTC STD. DRAWING RDH-500-03 AND THE STANDARD SPECIFICATIONS FOR ROAD AND BRIDGE CONSTRUCTION.
8. 3/4" CHAMFER ON ALL EXPOSED EDGES.
9. PREFORMED STEPPED HOLE SIZED AS PER O.D. OF PIPE + 3"-4".

**SECOND POUR DRAWING**

**FIRST POUR - 4,984 LBS.**

**SECOND POUR - 5796 LBS.**

**TOTAL - 10,780 LBS.**

**PRODUCTION WORK ORDER**

PRODUCT I.D.: HWKYTC-STD24D

DESCRIPTION: KYTC STD. DBL 24"φ STR. HW FOR 18"φ PIPE



**QUALITY CONTROL CHECKLIST**

- ALL DIMENSIONS CORRECT.
- LIFTERS INSTALLED.
- STEPPED HF'S CORRECT SIZE.
- REINFORCING CORRECT.
- CLEARANCE ON REINFORCING CORRECT.
- EDGES CHAMFERED.
- FORM FINISH ON EXPOSED FACE.

PRODUCT VIEW: RIGHT SIDE UP

CUSTOMER: WINWATER HARTFORD KY CO.

PLANT: BEAVER DAM, KY.

PROJECT: WEIRS CREEK SUBDIVISION

WEIGHT: 10,780 LBS.

STRUCTURE ID.: 18IN DBL STRAIGHT HW 1

TOP SECTION JOINT: N/A

SALES ORDER NO: 25-0232

BASE SECTION JOINT: N/A

P.C.: A. CHAMBERS

DRAWING: J. COPPAGE

QC CHECK INITIALS:

DATE: 10/15/25

SCALE: NTS

PG. 1 of 1