



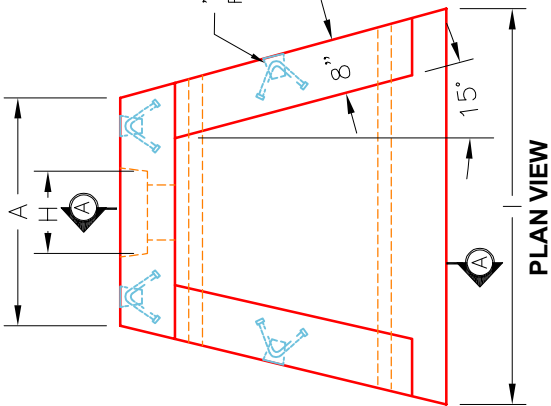
**Structure ID: E2**

**P1 HWSF8**

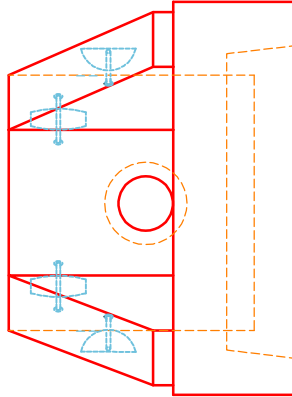
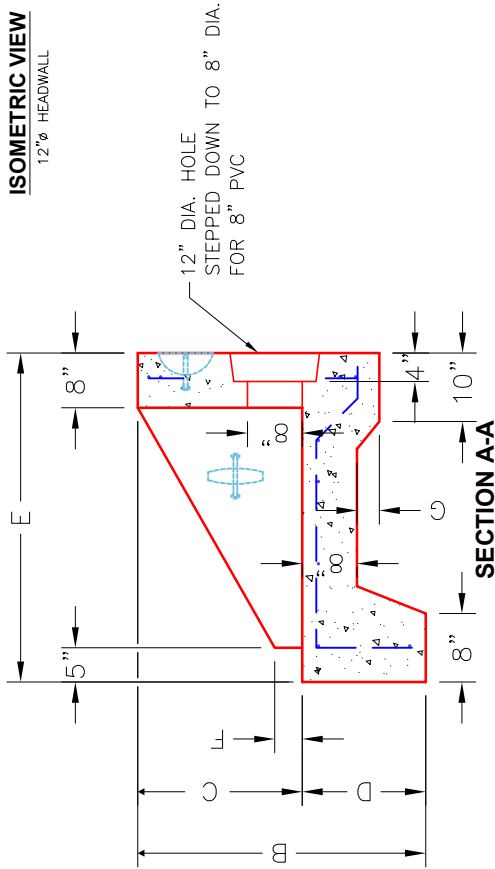
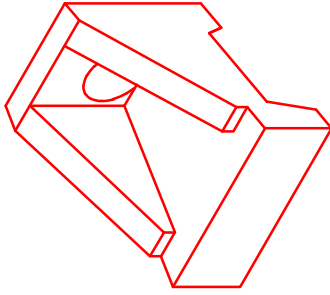
**8" - SLOPED & FLARED HEADWALL**

DIMENSIONS										
PIPE Ø	A	B	C	D	E	F	G	H	I	WEIGHT
8"	2'-9"	3'-6"	2'-0"	1'-6"	4'-0"	3"	2 <sup>3</sup> / <sub>8</sub> "	1'-4"	4'-9"	3,161 LBS.

"A-ANCHOR" LIFTING SYSTEM FOR PLANT & FIELD HANDLING.



**ISOMETRIC VIEW**  
12"Ø HEADWALL



**NOTES:**

1. CONCRETE: 4500 PSI @ 28 DAYS.
2. REINFORCING: #4 BAR @ 12" C/C E.W. -GRADE 60, (WITH 2" CONCRETE COVER MINIMUM)
3. REINFORCING BARS TO BE TACK WELDED OR TIED.
4. DRAWING TO BE USED IN CONJUNCTION WITH KYTC STD. DRAWING RDH-020-03 AND THE STANDARD SPECIFICATIONS FOR ROAD AND BRIDGE CONSTRUCTION.
5. 3/4" CHAMFER ON ALL EXPOSED EDGES.

**PRODUCTION WORK ORDER**

PRODUCT I.D.: HWSF8	DESCRIPTION: 8" SLOPED & FLARED HEADWALL
PRODUCT VIEW: RIGHT SIDE UP	CUSTOMER: WINWATER HARTFORD KY CO.
PLANT: BEAVER DAM, KY.	PROJECT: BEN HAWES PICKLEBALL COURT
WEIGHT: 3,161 LBS.	STRUCTURE ID.: E2
TOP SECTION JOINT: N/A	SALES ORDER NO: 25-0231
BASE SECTION JOINT: N/A	PC: A. CHAMBERS
QC CHECK INITIALS:	DRAWING: J. COPPAGE
	DATE: 11/13/25
	SCALE: NTS
	Pg. 1 of 1

