

Job Name: 25-0230 - Casey's General Store 4606
 Job Location: Morgantown, KY
 Contractor: American Contracting LLC

Plant: 100
 1/7/2026 8:32:49 AM

Tech: J. Horsley
 PC: A. Chambers



Structure ID: MH 8

P1 MH048BA72

MH BASE T/n

- P3) 48" - CASTING HEIGHT - 0"
- P2) 48" - MH RISER SPECIAL/CUST. HT F/G - 13"
- P1) 48" - MH BASE T/n - 72"
- 1) 48" x 69" - WEIR WALL 6" THK - SECONDARY POUR - *
- 1) Plate - TRASHRACKS Orifice Plate PL-12-P (PLAIN)
- 1) HATCH (Alum.) - HALLIDAY R1R 48"
- 2) 48" - Conseal CS-102 1.00"
- 1) Hole - 22
- 2) Hole - 10
- 1) Hole - 20
- 6) MH Step ML-10-TDS-NCR - 10"

0 lb
 908 lb
 5994 lb
 1565 lb
 5 lb
 86 lb
 0 lb
 0 lb
 0 lb
 0 lb
 0 lb
 0 lb

Structure Total: 8558 lb

- Structure Notes:**
1. PER KYTC MANHOLE TYPE B / ASTM C-478 SPECIFICATIONS
 2. CONCRETE: 4,000 PSI AT 28 DAYS
 3. REINFORCEMENT: PER ASTM A615
 4. NO STORM INVERT
 5. STEPS AT 55 DEGREES
 6. THIS STRUCTURE CONTAINS A WEIR WALL - SEE PG. 2 OF 2 FOR WEIR WALL DETAILS
 7. HATCH BY ICAST (HALLIDAY R1R48)
 8. ORIFICE PLATE BY ICAST (TRASHRACKS PL-12-P)

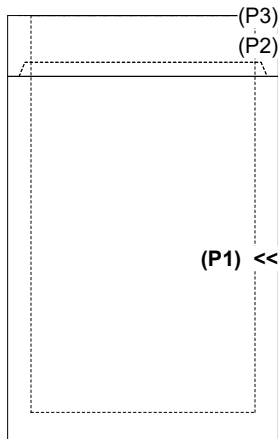
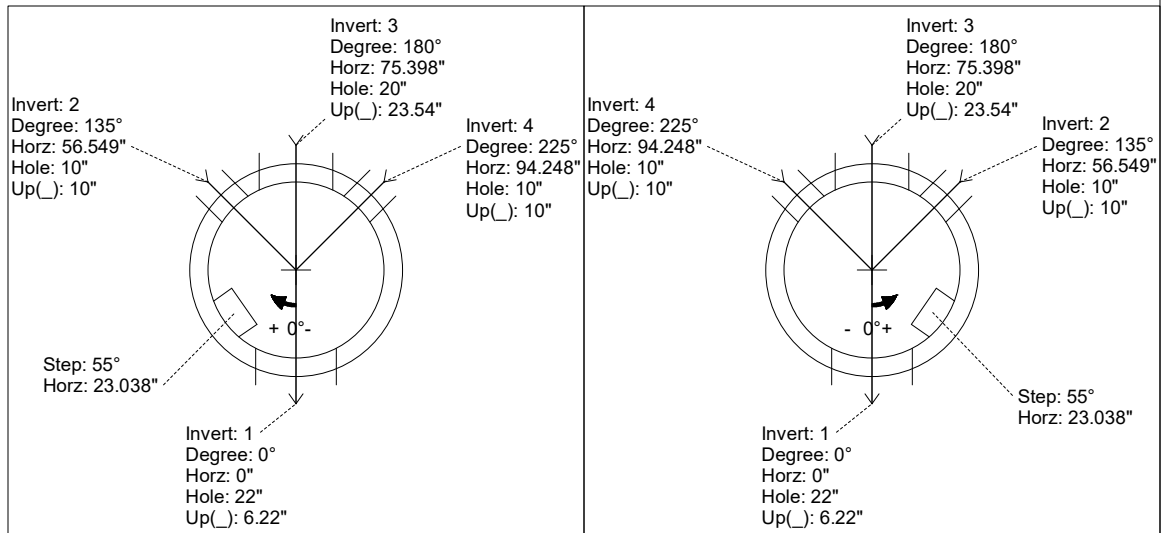
PG. 1 OF 2

Rim: 420.87' Rim to Invert: 6.31' Slack: 0.44" Sump: 9.72" Step Position: 55

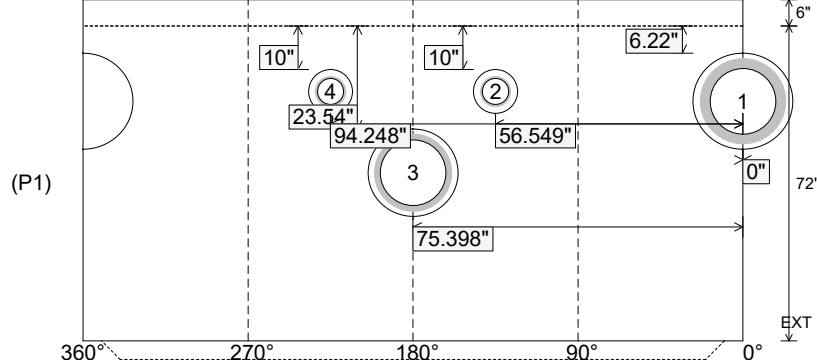
Position	Elev	Angle	Ext. (cw)	Pipe	Pipe OD	Connector	Hole	Horz Size	Up (↓)	Offset
Invert 1	414.56'	0°	0"	15" RCP B WALL	19.5"	Hole 22	22"	22.854"	6.22"	0"
Invert 2	414.75'	135°	68.33"	6" HDPE (perf pipe)	6.9"	Hole 10	10"	10.074"	10"	0"
Invert 3	415.92'	180°	91.106"	15" HDPE	17.6"	Hole 20	20"	20.629"	23.54"	0"
Invert 4	414.75'	225°	113.883"	6" HDPE (perf pipe)	6.9"	Hole 10	10"	10.074"	10"	0"
Invert 5										
Invert 6										
Invert 7										
Invert 8										

RIGHT-SIDE UP VIEW (int. dimensions)

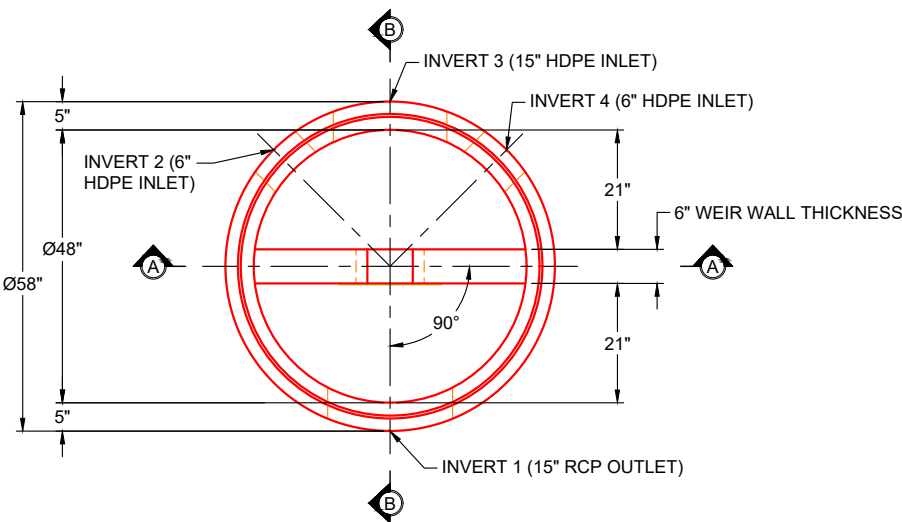
UPSIDE-DOWN VIEW (int. dimensions)



INSIDE WALL DIMENSIONS



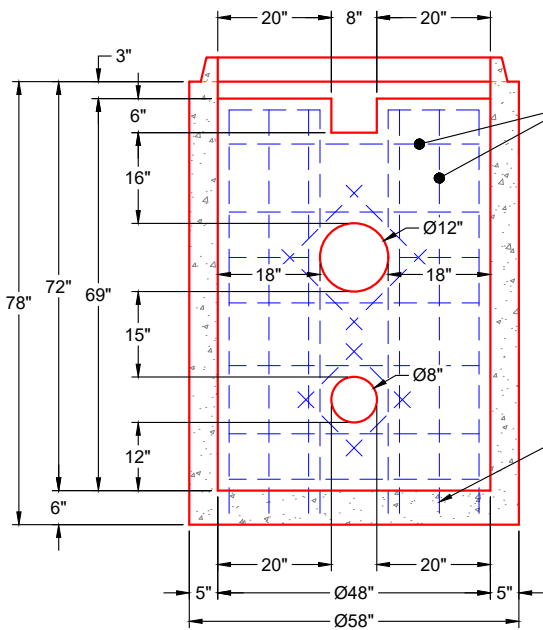
Coating (Int): Coating (Ext):	Seam Up: Tongue Seam Dn: n/a	Wall Thickness: 5" Floor Height: 6"	Height (Int): 72" Height (Ext): 78"	Weight (Net): 5994 lb Volume (Net): 1.53cu.yd
----------------------------------	---------------------------------	--	--	--



**PLAN VIEW
RIGHT SIDE UP**

GENERAL NOTES:

1. PER ASTM C-478 (LATEST REVISION)
2. CONCRETE: 4,000 PSI AT 28 DAYS
3. REINFORCEMENT: DRILL & DOWEL #4 BAR @ 12" C.C. E.W. (GRADE 60) INTO BASE FLOOR FOR WEIR WALL POUR TIE-IN - 2" MIN. REBAR CLEARANCE (TYP) & MIN. 4" PENETRATION INTO BASE FLOOR
4. WEIGHT: 1,565 LBS (7,559 LBS BASE & WEIR WALL TOTAL)
5. TRASHRACKS PL-12-P ORIFICE PLATE WITH Ø1.2" HOLE SUPPLIED BY ICAST
6. SEE STACK-IT DRAWING FOR "MH 8" (PG. 1 OF 2) FOR ADDITIONAL DETAILS

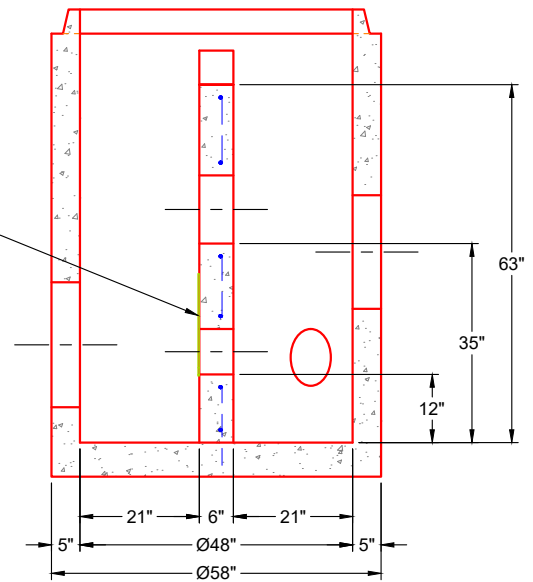


**SECTION A-A
RIGHT SIDE UP
(SOME DETAILS OMITTED FOR CLARITY)**


#4 BAR @ 12" C.C. E.W.
(GRADE 60) WEIR WALL
REINFORCEMENT - 2" MIN.
REBAR CLEARANCE (TYP)

TRASHRACKS PL-12-P
ORIFICE PLATE WITH
Ø1.2" HOLE SUPPLIED
BY ICAST

4" MIN. REBAR
PENETRATION
INTO BASE
FLOOR



**SECTION B-B
RIGHT SIDE UP
(SOME DETAILS OMITTED FOR CLARITY)**

PRODUCTION WORK ORDER		PRODUCT I.D.: WEIR	DESCRIPTION: Ø48" X 69" X 6" WEIR WALL		
	QUALITY CONTROL CHECKLIST	PRODUCT VIEW: RIGHT SIDE UP	CUSTOMER: AMERICAN CONTRACTING LLC		
	<input type="checkbox"/> ALL DIMENSIONS CORRECT.	PLANT: BEAVER DAM, KY	PROJECT: CASEY'S GENERAL STORE 4606		
	<input type="checkbox"/> LIFTERS INSTALLED.	WEIGHT: 1,565 LBS (7,559 LBS BASE & WEIR TOTAL)	STRUCTURE: MH 8		
	<input type="checkbox"/> HOLE LOCATION(S) CORRECT.	TOP SECTION JOINT: N / A	QUOTE / SALES ORDER NO: 25-0230		
	<input type="checkbox"/> REINFORCING CORRECT.	BASE SECTION JOINT: N / A	PE: J.H. ROSS	DRAWN BY: K. CARDWELL	
	<input type="checkbox"/> CASTING LOCATION & ORIENTATION.	QC CHECK INITIALS:	DATE: 01/07/26	SCALE: NTS	PG. 2 OF 2
<input type="checkbox"/> EDGES CHAMFERED.					
<input type="checkbox"/> ALL PATCHWORK ACCEPTABLE.					