

Job Name: 25-0230 - Casey's General Store 4606  
 Job Location: Morgantown, KY  
 Contractor: American Contracting LLC

Plant: 100

1/7/2026 8:37:51 AM

Tech: J. Horsley

PC: A. Chambers



**Structure ID: MH 11**

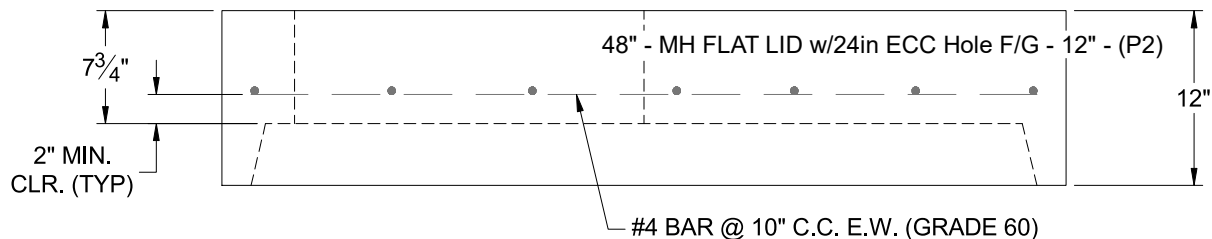
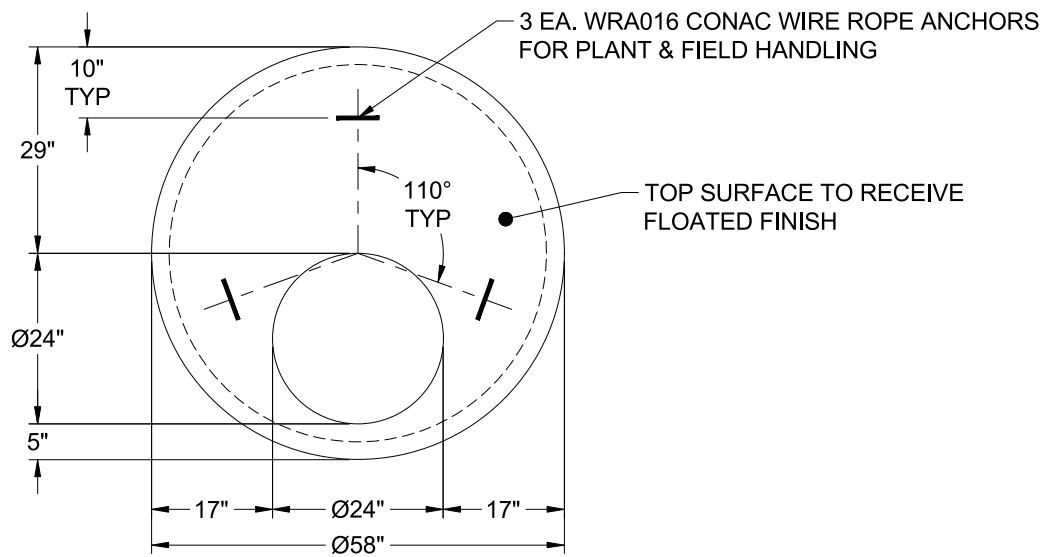
**P2 MH048LD12ECC**

**MH FLAT LID w/24in ECC Hole F/G**

- P3) 24" - CASTING HEIGHT - 8"
- P2) 48" - MH FLAT LID w/24in ECC Hole F/G - 12"
- P1) 48" - MH BASE T/n - 72"
- 1) CASTING - HOE KY-510 F/C (KY TY.2)
- 1) 48" - Conseal CS-102 1.00"
- 1) Hole - 30
- 1) Hole - 16
- 1) Hole - 20
- 4) MH Step ML-10-TDS-NCR - 10"

	0 lb
	1561 lb
	5823 lb
	510 lb
	0 lb
	0 lb
	0 lb
	0 lb
	0 lb
	0 lb
Structure Total:	7894 lb

- Structure Notes:**
1. PER KYTC MANHOLE TYPE B / ASTM C-478 SPECIFICATIONS
  2. CONCRETE: 4,000 PSI AT 28 DAYS
  3. REINFORCEMENT: #4 BAR @ 10" C.C. E.W. (GRADE 60) - 2" MIN. REBAR CLEARANCE (TYP)
  4. NO STORM INVERT
  5. STEPS AT 190 DEGREES
  6. CASTING BY ICAST (HOE KY-510 FRAME & COVER)
  7. LIFTERS: 3 EA. WRA016 CONAC WIRE ROPE ANCHORS FOR PLANT & FIELD HANDLING



Coating (Int): Coating (Ext):	Seam Up: Flat Seam Dn: Groove	Wall Thickness: 5"	Height (Ext): 12"	Weight (Net): 1561 lb Volume (Net): 0.4cu.yd
----------------------------------	----------------------------------	--------------------	-------------------	---