

Job Name: 25-0230 - Casey's General Store 4606  
 Job Location: Morgantown, KY  
 Contractor: American Contracting LLC

Plant: 100

11/17/2025 12:25:32 PM

Tech: J. Horsley

PC: A. Chambers



**Structure ID: CB 6**

**P1 BX24300808VF**

**BOX BASE 8inW, 8inF, Variable Ht F/n**

P3) 24" x 30" - CASTING HEIGHT - 3.75"	0 lb
P2) 24" x 30" - GRADE RING F/F - 3"	282 lb
P1) 24" x 30" - BOX BASE 8inW, 8inF, Variable Ht F/n - 47"	5296 lb
1) CASTING - HOE KY-460-11 F/G (DBI 11)	421 lb
2) 24" x 30" - Conseal CS-102 1.00"	0 lb
2) Hole - 16	0 lb
3) Hole - 6	0 lb
<b>Structure Total:</b>	<b>5999 lb</b>

**Structure Notes:**  
 1. KYTC DBI TYPE 11 / ASTM C-913 SPEC'S.  
 2. CONCRETE = 4,000 PSI AT 28 DAYS.  
 3. NO INVERT CHANNEL.  
 4. NO STEPS.  
 5. DBI 11 FRAME/GRATE BY ICAST.

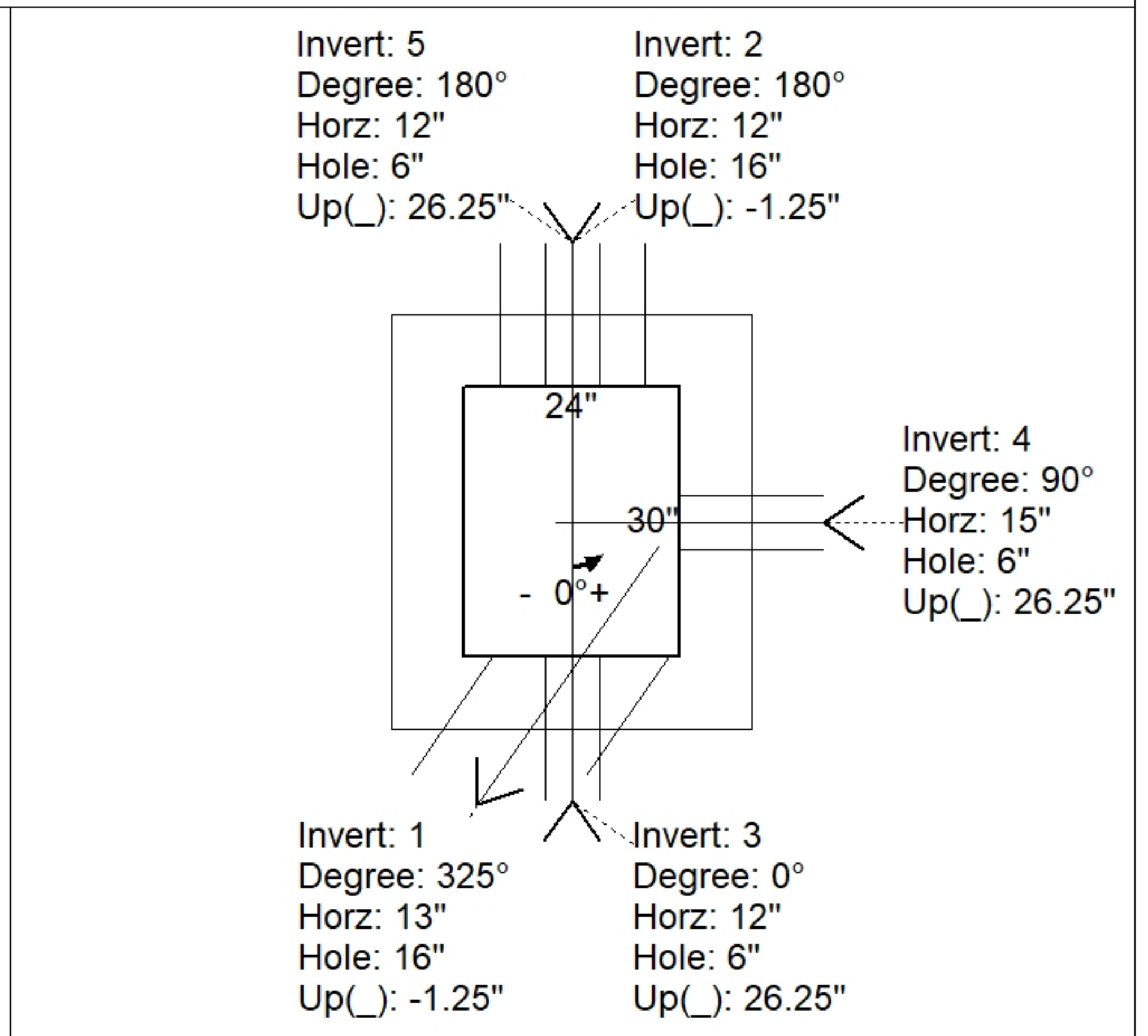
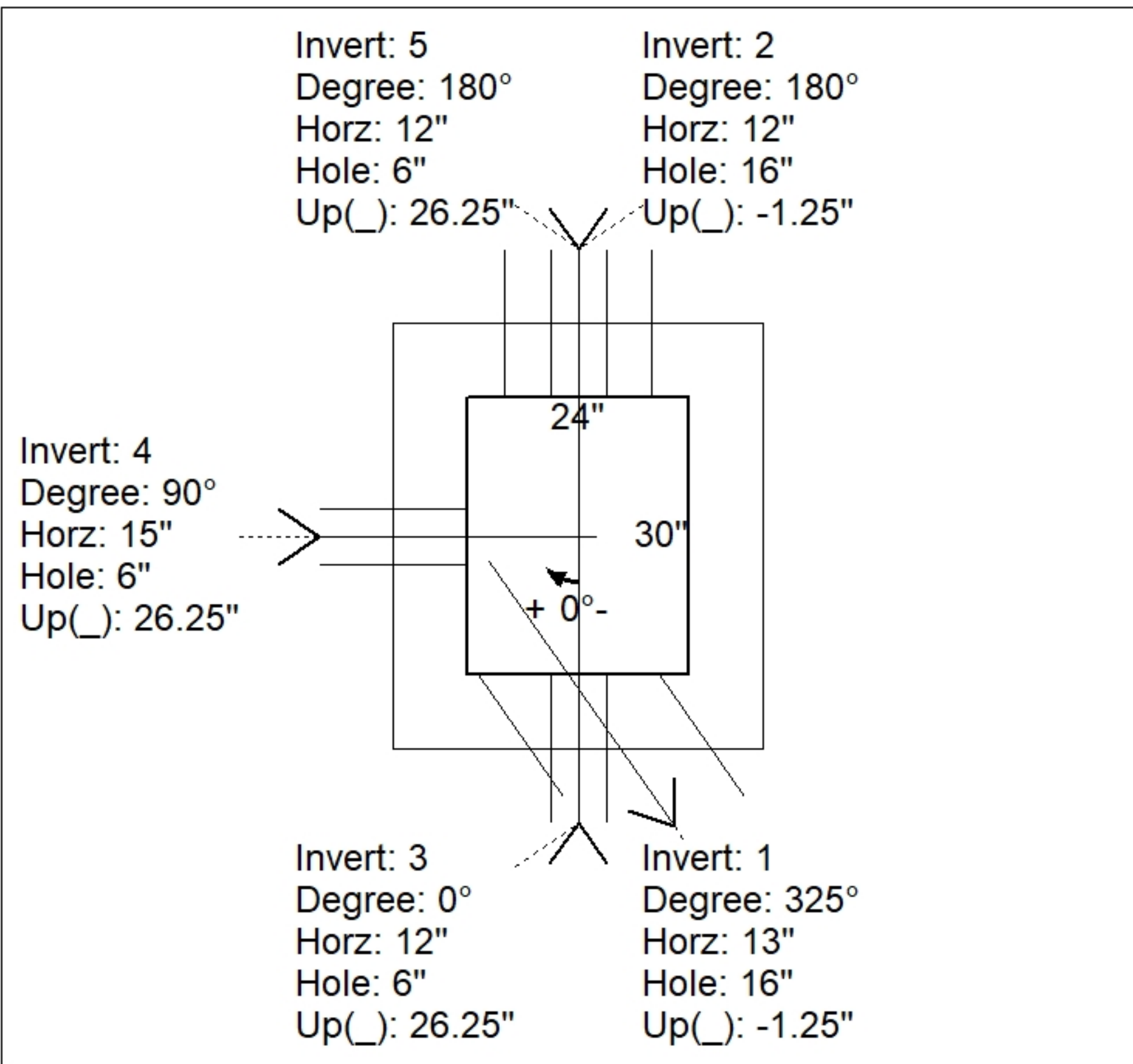
REINFORCING PER ASTM A615 (GRADE 60).  
 - WALLS (As .31) #5 BARS AT 12" C.C.E.W..  
 - FLOOR (As .31) #5 BARS AT 12" C.C.E.W.

Rim: 424.35' Rim to Invert: 4.55' Slack: 0.85" Sump: 0" Step Position:

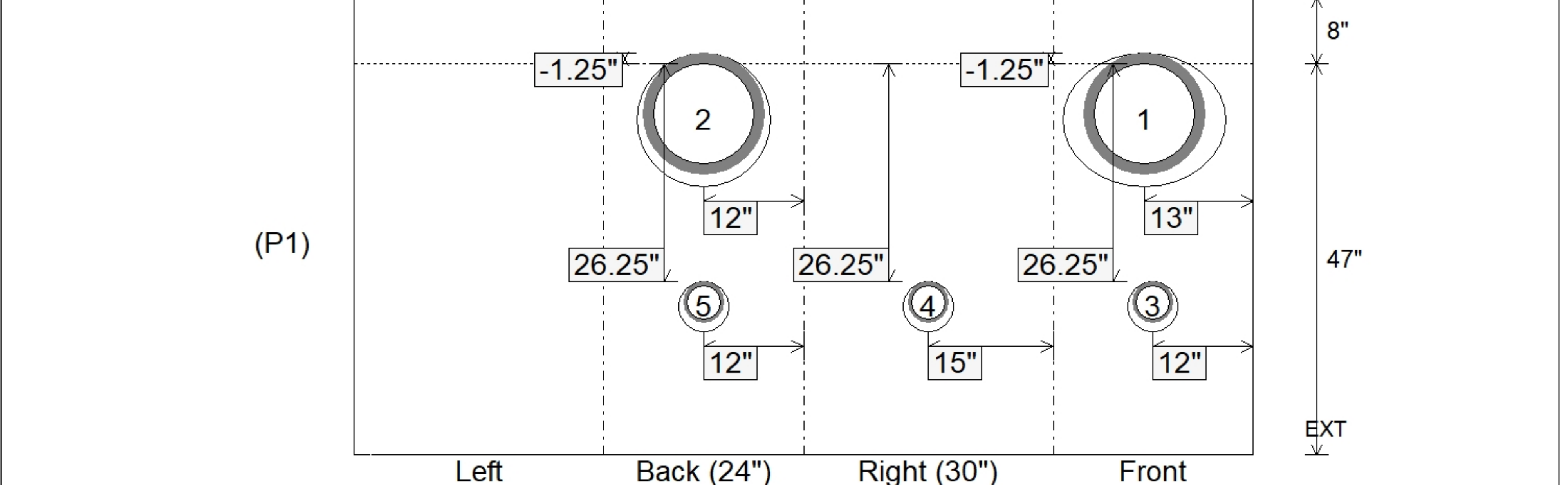
Position	Elev	Angle	Ext. (cw)	Pipe	Pipe OD	Connector	Hole	Horz Size	Up ( )	Offset
Invert 1	419.8'	325°	15.375"	12" HDPE	14.5"	Hole 16	16"	19.532"	-1.25"	9.43"
Invert 2	419.8'	180°	20"	12" HDPE	14.5"	Hole 16	16"	16"	-1.25"	0"
Invert 3	422.02'	0°	20"	4" HDPE (perf pipe)	4.8"	Hole 6	6"	6"	26.25"	0"
Invert 4	422.02'	90°	23"	4" HDPE (perf pipe)	4.8"	Hole 6	6"	6"	26.25"	0"
Invert 5	422.02'	180°	20"	4" HDPE (perf pipe)	4.8"	Hole 6	6"	6"	26.25"	0"
Invert 6										
Invert 7										
Invert 8										

RIGHT-SIDE UP VIEW (int. dimensions)

UPSIDE-DOWN VIEW (int. dimensions)



INSIDE WALL DIMENSIONS



Coating (Int): Coating (Ext):	Seam Up: Flat Seam Dn: n/a	Wall Thickness: 8" Floor Height: 8"	Height (Int): 47" Height (Ext): 55"	Weight (Net): 5296 lb Volume (Net): 1.35cu.yd
----------------------------------	-------------------------------	--	--	--