

Job Name: 25-0230 - Casey's General Store 4606  
 Job Location: Morgantown, KY  
 Contractor: American Contracting LLC

Plant: 100

11/17/2025 12:25:30 PM

Tech: J. Horsley

PC: A. Chambers



**Structure ID: CB 4**

**P1 BX24300808VF**

**BOX BASE 8inW, 8inF, Variable Ht F/n**

P2) 24" x 30" - CASTING HEIGHT - 3.75"

P1) 24" x 30" - BOX BASE 8inW, 8inF, Variable Ht F/n - 38"

1) CASTING - HOE KY-460-11 F/G (DBI 11)

1) 24" x 30" - Conseal CS-102 1.00"

2) Hole - 16

0 lb

4516 lb

421 lb

0 lb

0 lb

Structure Total: 4937 lb

Structure Notes:

1. KYTC DBI TYPE 11 / ASTM C-913 SPEC'S.
2. CONCRETE = 4,000 PSI AT 28 DAYS.
3. NO INVERT CHANNEL.
4. NO STEPS.
5. DBI 11 FRAME/GRATE BY ICAST.

REINFORCING PER ASTM A615 (GRADE 60).

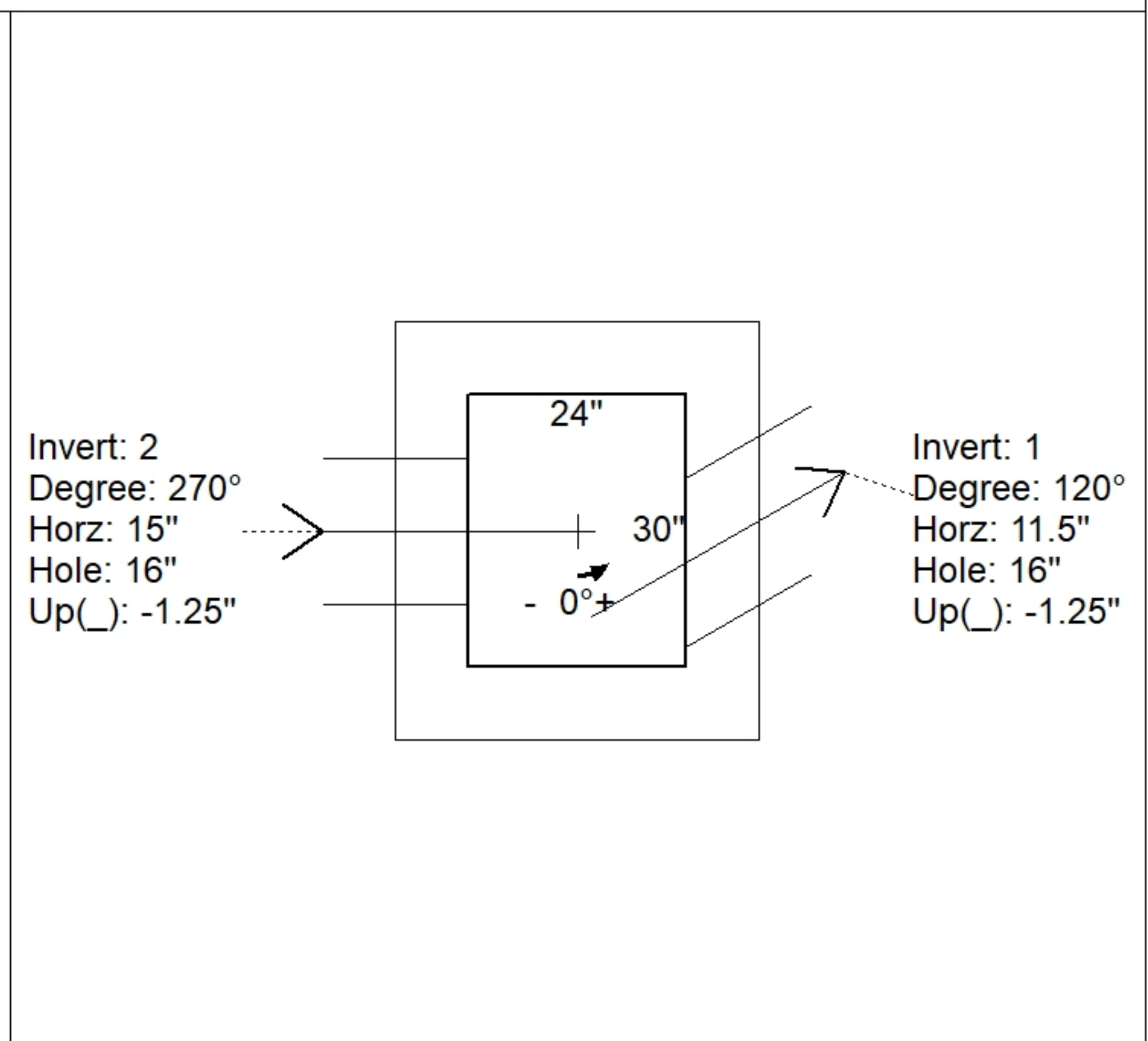
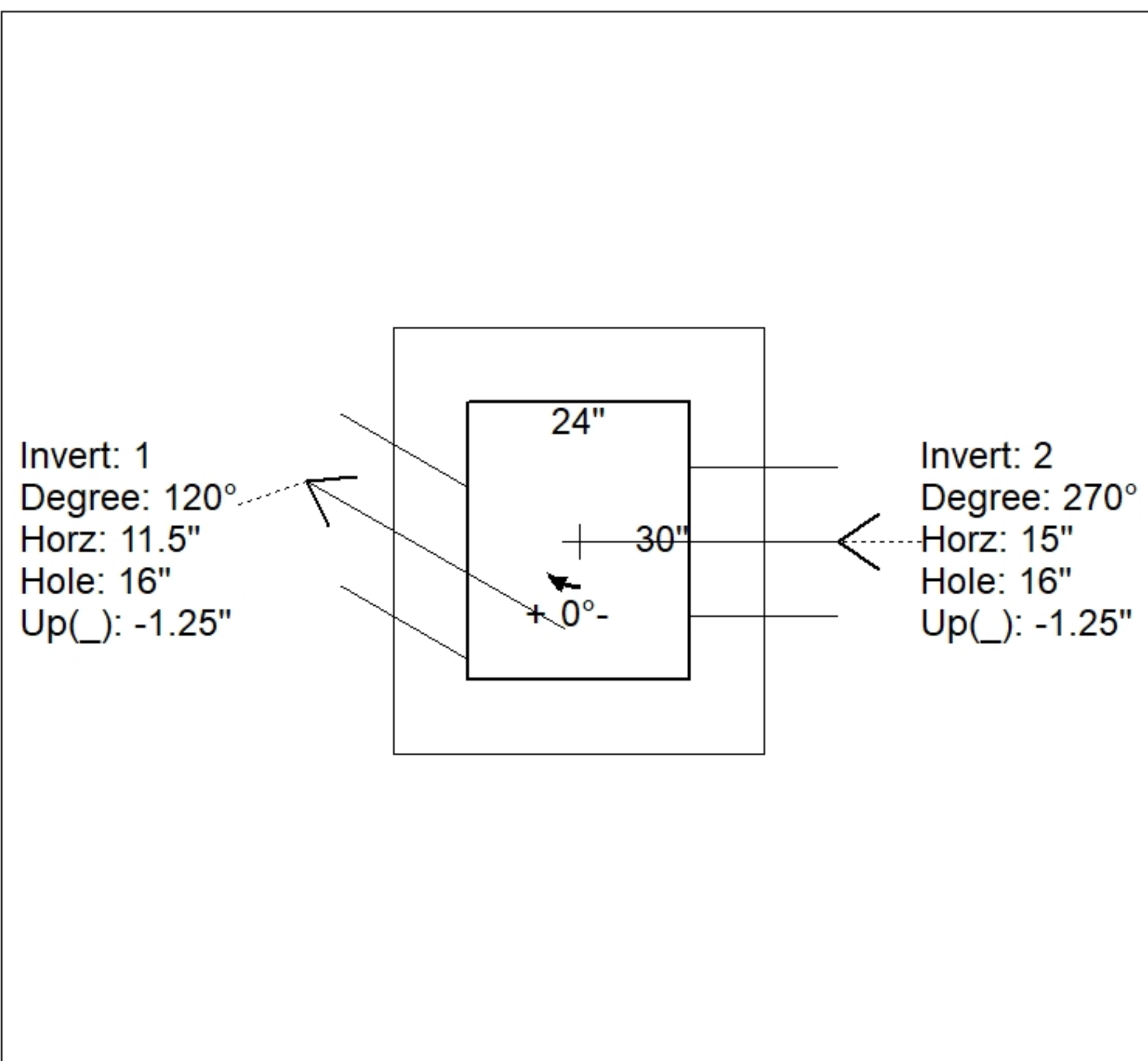
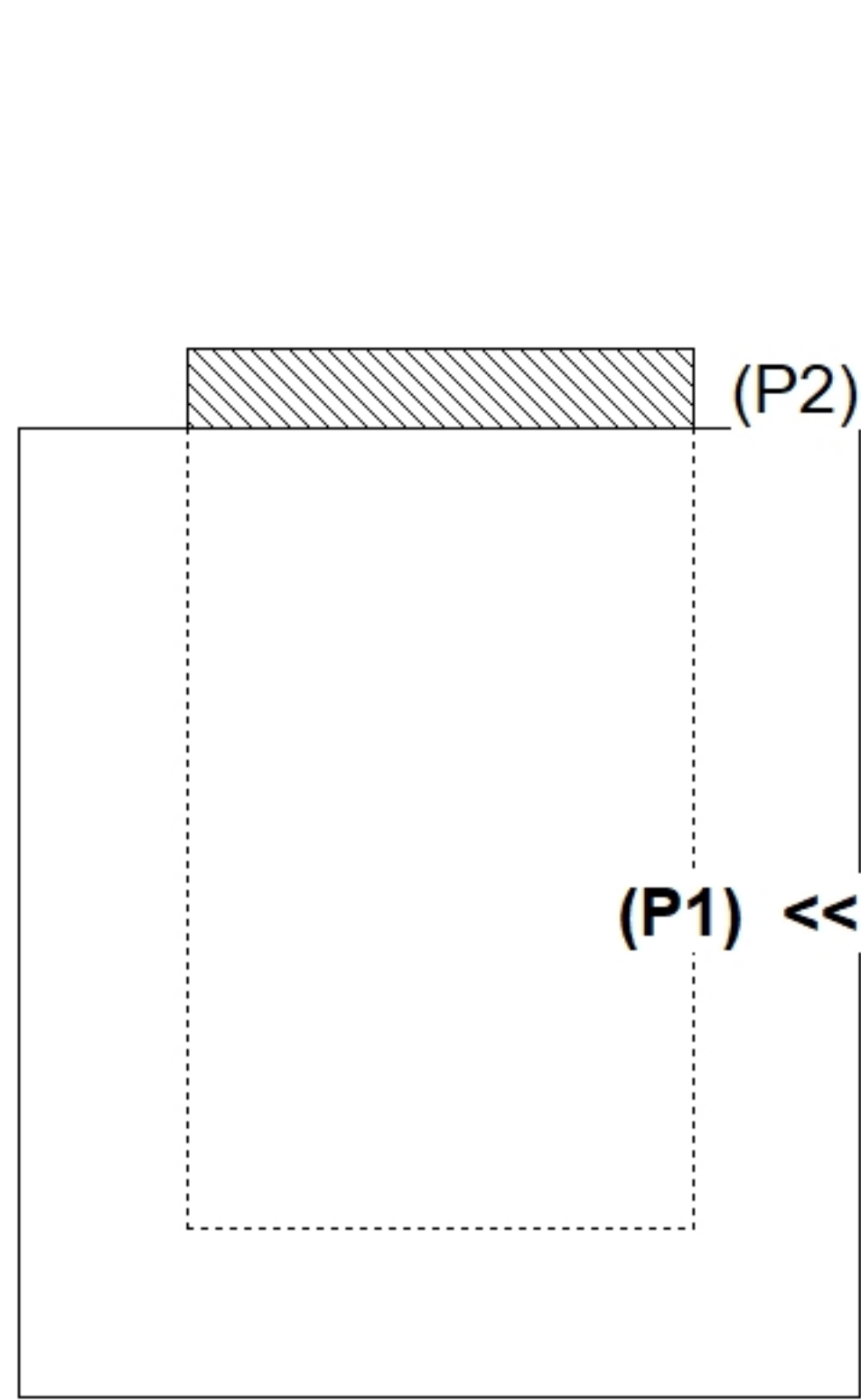
- WALLS (As .31) #5 BARS AT 12" C.C.E.W.
- FLOOR (As .31) #5 BARS AT 12" C.C.E.W.

Rim: 422.1' Rim to Invert: 3.53' Slack: 0.61" Sump: 0" Step Position:

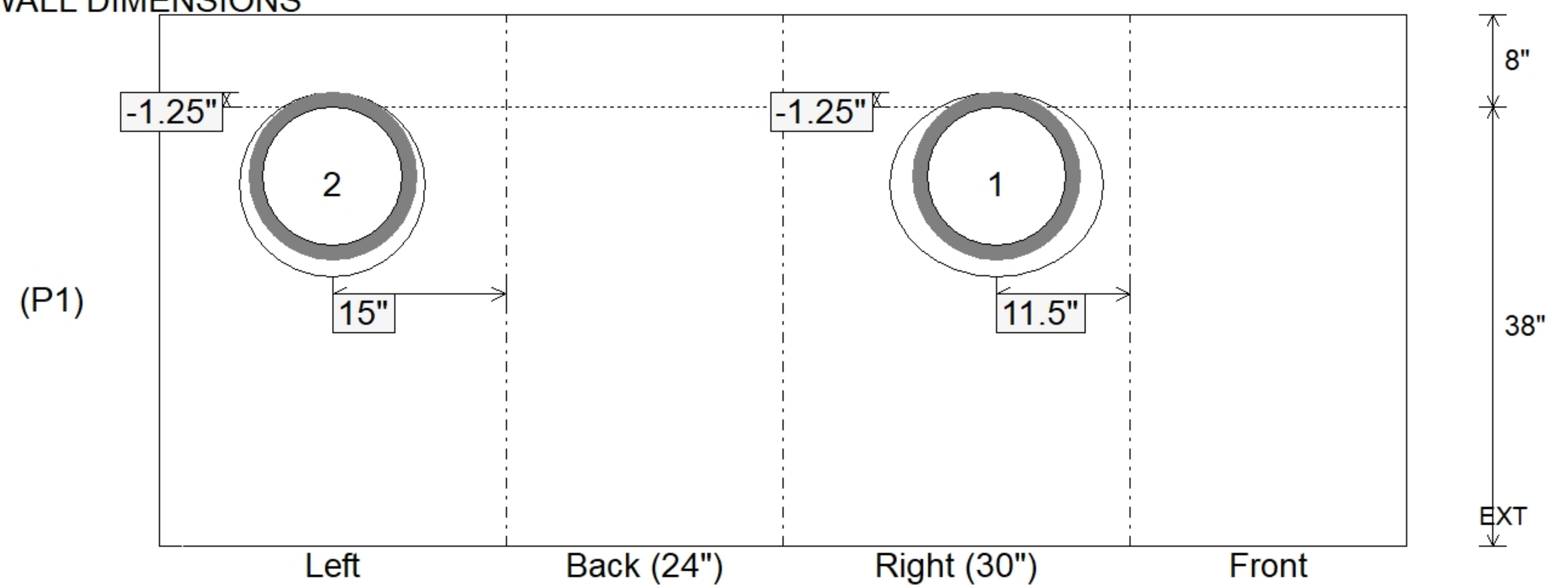
Position	Elev	Angle	Ext. (cw)	Pipe	Pipe OD	Connector	Hole	Horz Size	Up ( )	Offset
Invert 1	418.57'	120°	24.125"	12" HDPE	14.5"	Hole 16	16"	18.475"	-1.25"	-9"
Invert 2	418.57'	270°	23"	12" HDPE	14.5"	Hole 16	16"	16"	-1.25"	0"
Invert 3										
Invert 4										
Invert 5										
Invert 6										
Invert 7										
Invert 8										

RIGHT-SIDE UP VIEW (int. dimensions)

UPSIDE-DOWN VIEW (int. dimensions)



INSIDE WALL DIMENSIONS



Coating (Int):  
Coating (Ext):

Seam Up: Flat  
Seam Dn: n/a

Wall Thickness: 8"  
Floor Height: 8"

Height (Int): 38"  
Height (Ext): 46"

Weight (Net): 4516 lb  
Volume (Net): 1.15cu.yd