

Job Name: 25-0230 - Casey's General Store 4606
 Job Location: Morgantown, KY
 Contractor: American Contracting LLC

Plant: 100

1/7/2026 8:37:50 AM

Tech: J. Horsley

PC: A. Chambers



Structure ID: CB 1

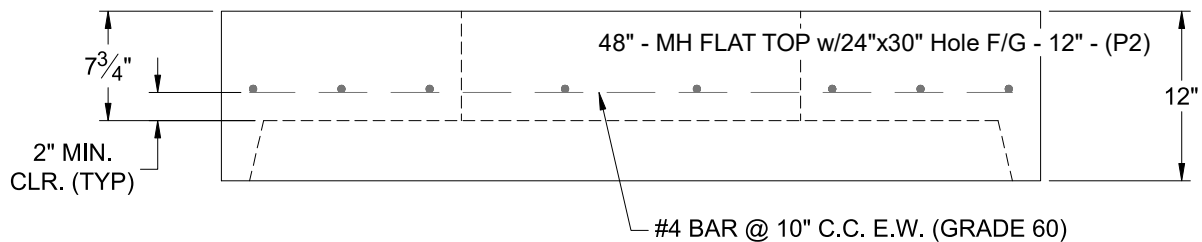
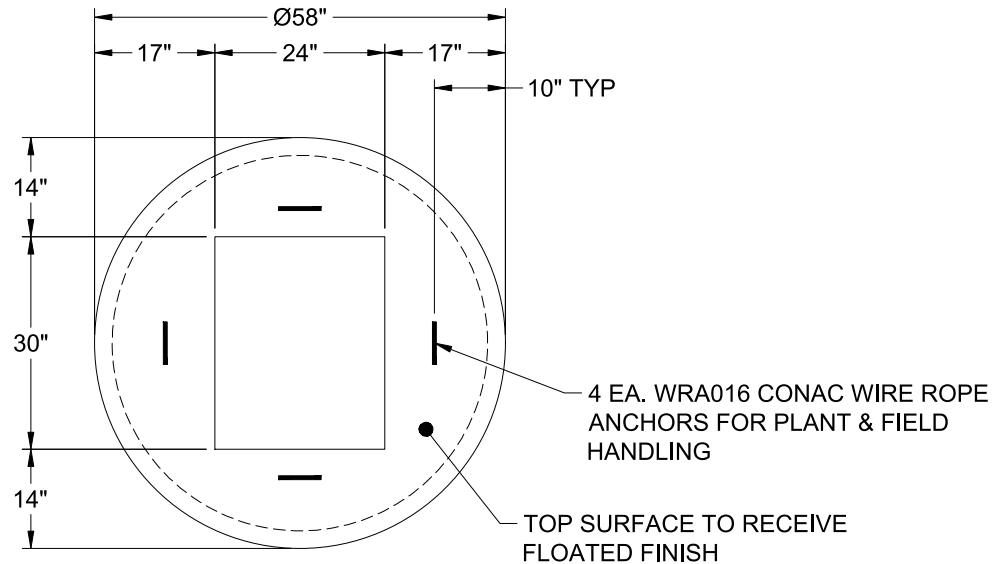
P2 MH048LD12-24X30RECT

MH FLAT TOP w/24"x30" Hole F/G

- P3) 24" x 30" - CASTING HEIGHT - 3.75"
- P2) 48" - MH FLAT TOP w/24"x30" Hole F/G - 12"
- P1) 48" - MH BASE Custom Ht T/n - 60"
- 1) CASTING - HOE KY-460-11 F/G (DBI 11)
- 1) 48" - Conseal CS-102 1.00"
- 1) 24" x 30" - Conseal CS-102 1.00"
- 1) Hole - 16
- 3) Hole - 6

	0 lb
	1935 lb
	5440 lb
	421 lb
	0 lb
	0 lb
	0 lb
	0 lb
	0 lb
Structure Total:	7796 lb

- Structure Notes:**
1. PER KYTC DBI TYPE 11 / ASTM C-478 SPECIFICATIONS
 2. CONCRETE: 4,000 PSI AT 28 DAYS
 3. REINFORCEMENT: #4 BAR @ 10" C.C. E.W. (GRADE 60) - 2" MIN. REBAR CLEARANCE (TYP)
 4. NO STORM INVERT
 5. NO STEPS
 6. DBI TYPE 11 FRAME & GRATE BY ICAST
 7. LIFTERS: 4 EA. WRA016 CONAC WIRE ROPE ANCHORS FOR PLANT & FIELD HANDLING



Coating (Int):
 Coating (Ext):

Seam Up: Flat
 Seam Dn: Groove

Wall Thickness: 5"

Height (Ext): 12"

Weight (Net): 1935 lb
 Volume (Net): 0.49cu.yd