

Job Name: 25-0210 Salsa Square Development  
 Job Location: Bowling Green, KY  
 Contractor: Scott & Ritter, Inc.

Plant: 100

12/1/2025 12:19:40 PM

Tech: J. Horsley - A

PC: Celina Goff



**Structure ID: A6**

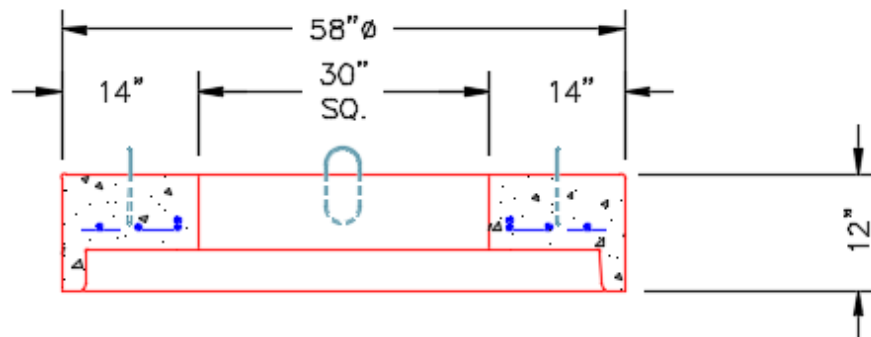
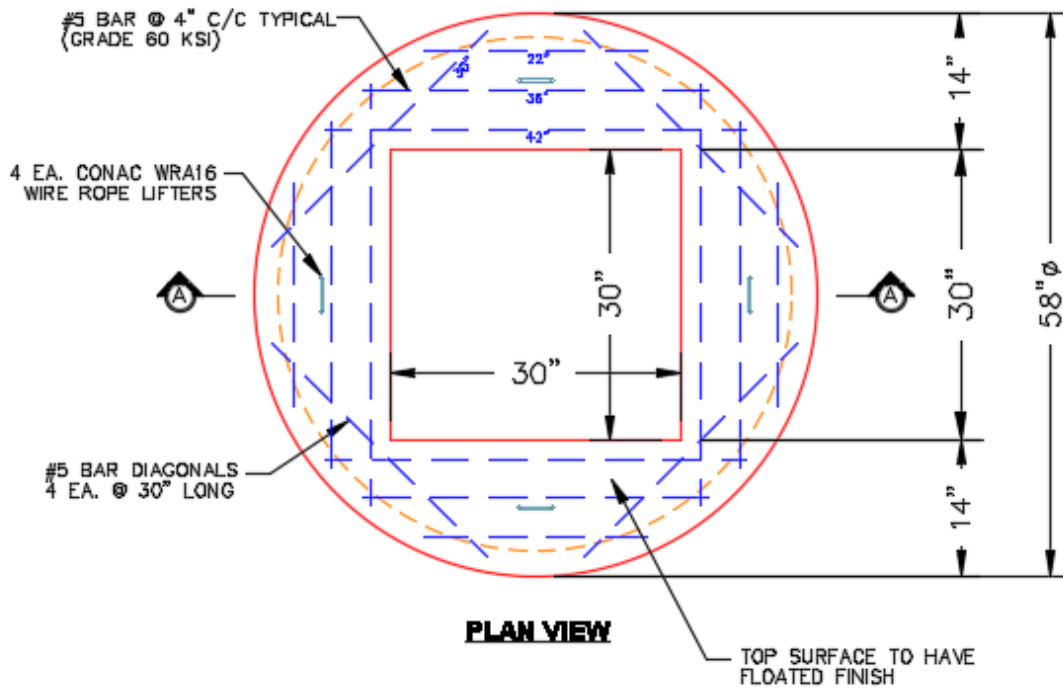
**P3 MH048LD12S**

**MH FLAT TOP w/30"x30" Hole F/G**

- P5) 30" x 30" - CASTING HEIGHT - 4"
- P4) 30" x 30" - GRADE RING F/F - 3"
- P3) 48" - MH FLAT TOP w/30"x30" Hole F/G - 12"
- P2) 48" - MH RISER T/G - 36"
- P1) 48" - MH BASE T/n - 42"
- 1) CASTING - HOE 468 F/G
- 2) 48" - SGL 1"x14.5' Butyl (2x)
- 1) Hole - 24
- 1) Hole - 20
- 7) MH Step ML-10-TDS-NCR - 10"

	0 lb
	218 lb
	1350 lb
	2515 lb
	3932 lb
	489 lb
	0 lb
	0 lb
	0 lb
	0 lb
Structure Total:	8503 lb

- Structure Notes:**  
 PLAN LABEL: ST-A6
1. HOE 468 F/G PROVIDED BY ICAST.
  2. PER ASTM C478 SPECIFICATIONS.
  3. CONCRETE = 4,000 PSI AT 28 DAYS.
  4. REINFORCING PER ASTM A615 (GRADE 60).
    - TOP SLAB (As .62) #5 BARS AT 6" C.C.E.W.
    - RISER/WALLS (As .12)
    - FLOOR (As .31) #5 BARS AT 12" C.C.E.W.



Coating (Int):  
 Coating (Ext):

Seam Up: Flat  
 Seam Dn: Groove

Wall Thickness: 5"

Height (Ext): 12"

Weight (Net): 1350 lb  
 Volume (Net): 0.33cu.yd