

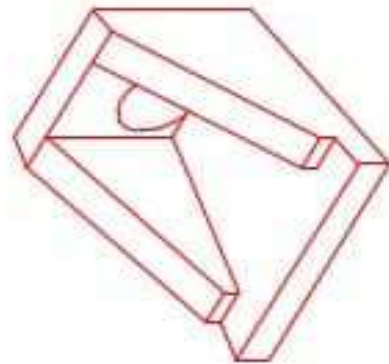


**Structure ID: HW 101-2**

**P1 HWSF12F**

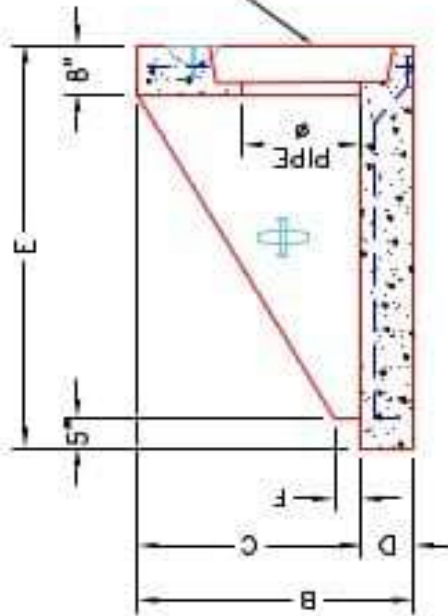
**12" - HW SLOPED & FLARED w/FLAT BOTTOM F/F**

DIMENSIONS								WEIGHT	
PIPE Ø	A	B	C	D	E	F	G	H	
12"	2'-0"	2'-8"	2'-0"	8"	4'-0"	3"	1'-6"	4'-9"	2,255 LBS.



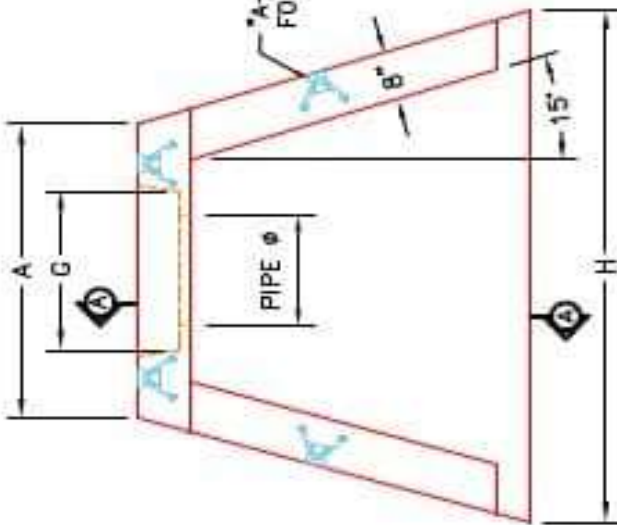
**ISOMETRIC VIEW**

STEPPED HOLE FORMER  
 FOR 15" PIPE Ø.  
 (PIPE O.D. + 3"-4")

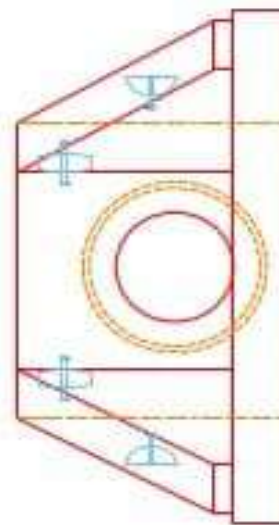


**SECTION A-A**

A-ANCHOR LIFTING SYSTEM  
 FOR PLANT & FIELD HANDLING.



**PLAN VIEW**



**FRONT ELEVATION**

INFRASTRUCTURE PRECAST, INC.  
 801 WEST 7TH ST. BEAVERDAM, KY 42003  
 PHONE: (770) 363-2208 FAX: (770) 298-7404

KYTC 12" SLOPED & FLARED HEADWALL  
 W/ FLAT BOTTOM

DRAWING NO. HW101-2 DATE: 1-23-26  
 REVISION BY: J.A. HORSLEY  
 WWW.INFPRECAST.COM

**NOTES:**

1. CONCRETE: KYTC APPROVED.
2. REINFORCING: #4 BAR Ø 12" C/C E.W. - GRADE 60, (WITH 2" CONCRETE COVER MINIMUM)
3. REINFORCING BARS TO BE TACK WELDED OR TIED.
4. PIPE AND LIFTING ANCHOR POCKETS TO BE GROUTED WITH KYTC APPROVED NON-SHRINK GROUT.
5. DRAWING TO BE USED IN CONJUNCTION WITH KYTC STD. DRAWING RDH-020-03 AND THE STANDARD SPECIFICATIONS FOR ROAD AND BRIDGE CONSTRUCTION.
6. CHAMFER ON ALL EXPOSED EDGES.
7. PREFORMED STEPPED HOLE SIZED AS PER O.D. OF PIPE + 3"-4".