

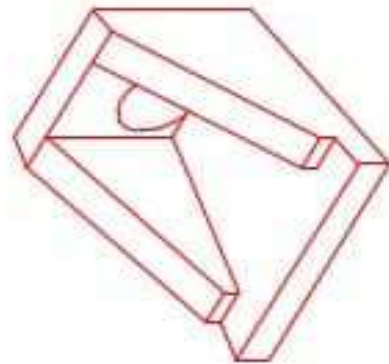


Structure ID: HW 101-1

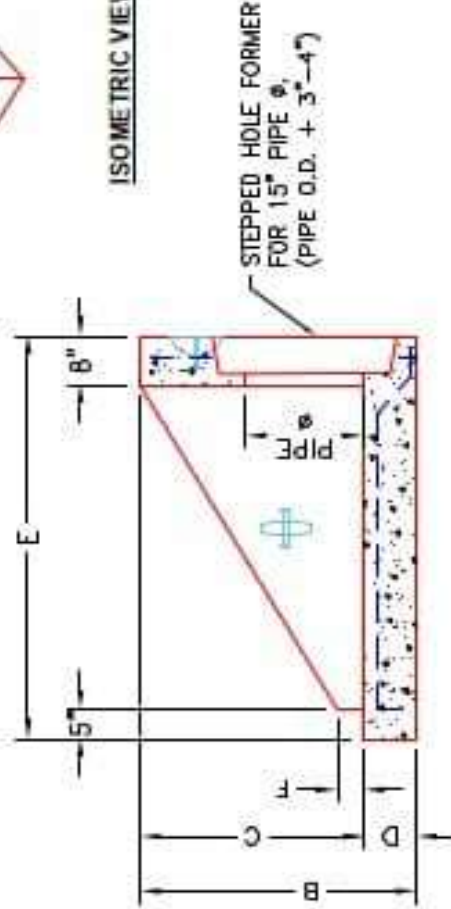
P1 HWSF12F

12" - HW SLOPED & FLARED w/FLAT BOTTOM F/F

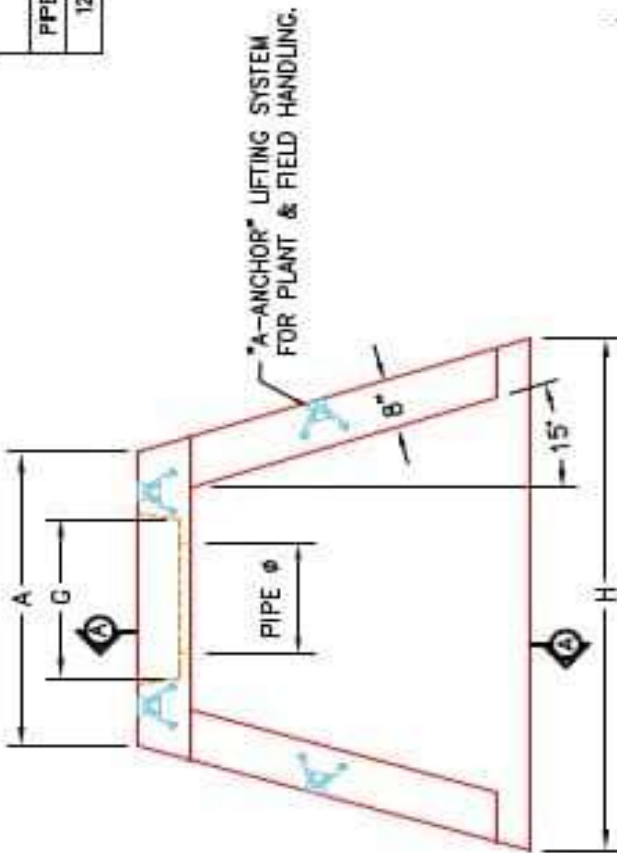
DIMENSIONS								WEIGHT	
PIPE Ø	A	B	C	D	E	F	G	H	
12"	2'-0"	2'-8"	2'-0"	8"	4'-0"	3"	1'-6"	4'-9"	2,255 LBS.



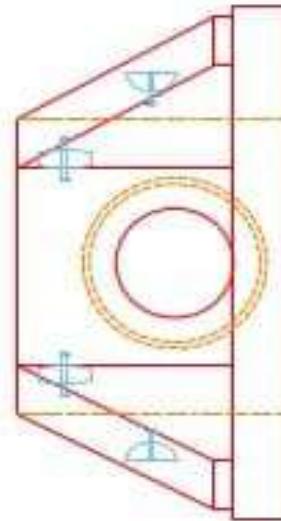
ISOMETRIC VIEW



SECTION A-A



PLAN VIEW



FRONT ELEVATION

INFRASTRUCTURE PRECAST, INC.
 801 WEST 7TH ST. BEAVERDAM, KY 42003
 PHONE: (770) 363-2208 FAX: (770) 298-7404

KYTC 12" SLOPED & FLARED HEADWALL
 W/ FLAT BOTTOM

DRAWING NO. HW101-12 DATE: 1-23-26
 DESIGNED BY: J.A. HORSLEY DRAWN BY: J. GORRAGE
 WWW.INFPRECAST.COM

- NOTES:**
1. CONCRETE: KYTC APPROVED.
 2. REINFORCING: #4 BAR @ 12" C/C E.W. - GRADE 60, (WITH 2" CONCRETE COVER MINIMUM)
 3. REINFORCING BARS TO BE TACK WELDED OR TIED.
 4. PIPE AND LIFTING ANCHOR POCKETS TO BE GROUTED WITH KYTC APPROVED NON-SHRINK GROUT.
 5. DRAWING TO BE USED IN CONJUNCTION WITH KYTC STD. DRAWING RDH-020-03 AND THE STANDARD SPECIFICATIONS FOR ROAD AND BRIDGE CONSTRUCTION.
 6. CHAMFER ON ALL EXPOSED EDGES.
 7. PREFORMED STEPPED HOLE SIZED AS PER O.D. OF PIPE + 3"-4".