



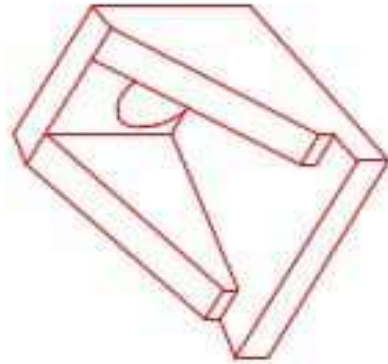
Structure ID: HW 100-1

P1 HWSF15F

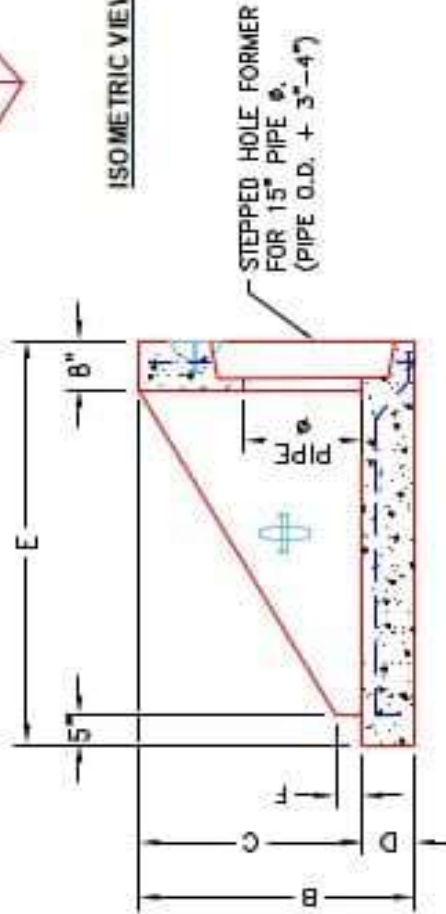
15" - HW SLOPED & FLARED w/FLAT BOTTOM F/F

DIMENSIONS

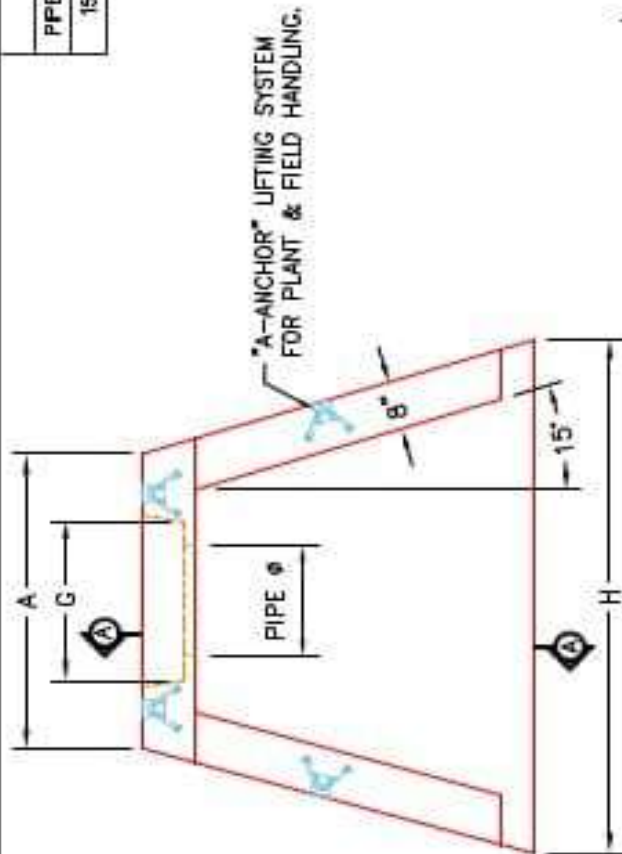
PPE Ø	A	B	C	D	E	F	G	H	WEIGHT
15"	2'-0"	2'-0"	2'-0"	0"	4'-0"	3"	1'-10"	4'-9"	2,610 LBS.



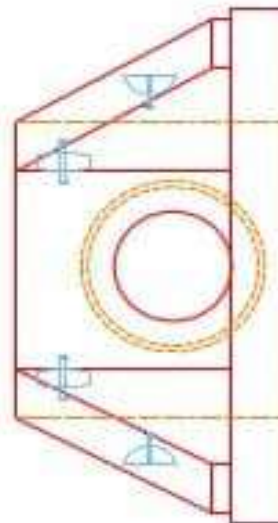
ISOMETRIC VIEW



SECTION A-A



PLAN VIEW



FRONT ELEVATION

NOTES:

1. CONCRETE: KYTC APPROVED.
2. REINFORCING: #4 BAR @ 12" C/C E.W. - GRADE 60, (WITH 2" CONCRETE COVER MINIMUM)
3. REINFORCING BARS TO BE TACK WELDED OR TIED.
4. PIPE AND LIFTING ANCHOR POCKETS TO BE GROUTED WITH KYTC APPROVED NON-SHRINK GROUT.
5. DRAWING TO BE USED IN CONJUNCTION WITH KYTC STD. DRAWING RDH-020-03 AND THE STANDARD SPECIFICATIONS FOR ROAD AND BRIDGE CONSTRUCTION.
6. 1/4" CHAMFER ON ALL EXPOSED EDGES.
7. PREFORMED STEPPED HOLE SIZED AS PER O.D. OF PIPE + 3"-4".



INFRASTRUCTURE PRECAST, INC.
 381 WEST 7TH ST. BEAVERDAM, KY 40201
 PHONE: (502) 383-2238 FAX: (502) 383-7439

KYTC 15" SLOPED & FLARED HEADWALL w/ FLAT BOTTOM	
DESIGNED BY: J.S. HORSLEY	DATE: 8-23-23
REVISION: BY: J.S. HORSLEY	REVISION: BY: J. COFFMAN
SCALE: 1/8" = 1'-0"	SCALE: 1/8" = 1'-0"