

Job Name: 25-0209 Garrison Gardens
 Job Location: Bowling Green, KY
 Contractor: Scotty's Contracting & Stone, LLC

Plant: 100
 1/23/2026 4:32:08 PM

Tech: J. Horsley - A
 PC: Celina Goff



Structure ID: CB 3-8

P1 MH048BA42

MH BASE F/n

- P3) 30" x 30" - CASTING HEIGHT - 4"
- P2) 48" - MH FLAT TOP w/30"x30" Hole F/F - 7"
- P1) 48" - MH BASE F/n - 42"
- 1) CASTING - HOE 468 F/G
- 1) 48" - Conseal CS-102 1.00"
- 1) 30" x 30" - Conseal CS-102 1.00"
- 1) Hole - 30
- 1) Hole - 24
- 1) Hole - 20
- 1) Hole - 6
- 3) MH Step ML-10-TDS-NCR - 10"

0 lb
 1264 lb
 3604 lb
 489 lb
 0 lb
 0 lb
 0 lb
 0 lb
 0 lb
 0 lb
 0 lb
 0 lb
 0 lb

- Structure Notes:**
1. PER ASTM C-478 SPECIFICATIONS
 2. CONCRETE: 4,000 PSI AT 28 DAYS
 3. REINFORCEMENT: PER ASTM A615
 4. NO STORM INVERT
 5. STEPS AT 135 DEGREES
 6. HOE 468 FRAME & GRATE SUPPLIED BY ICAST

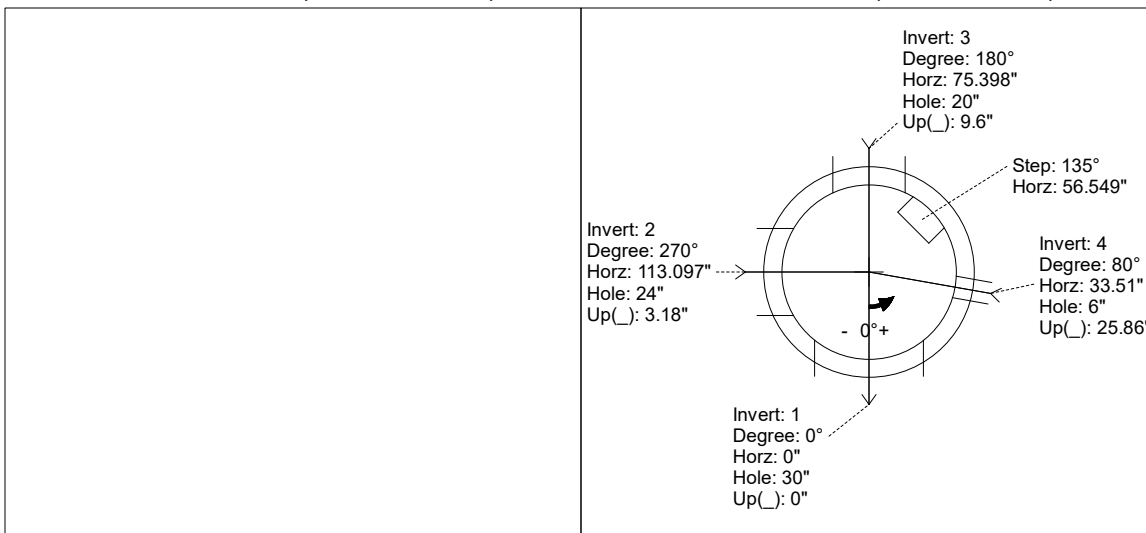
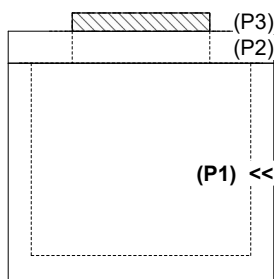
Structure Total: 5357 lb

Rim: 519.54' Rim to Invert: 4.28' Slack: 0.26" Sump: 1.9" Step Position: 135°

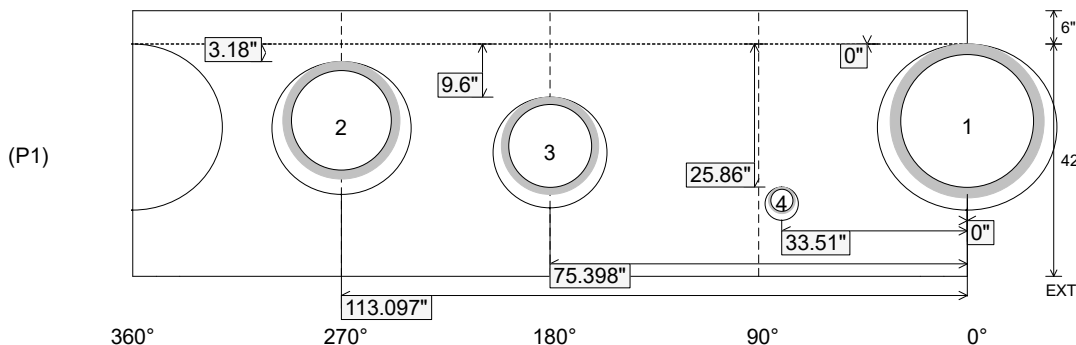
Position	Elev	Angle	Ext. (cw)	Pipe	Pipe OD	Connector	Hole	Horz Size	Up ()	Offset
Invert 1	515.26'	0°	0"	24" HDPE	27.8"	Hole 30	30"	32.406"	0"	0"
Invert 2	515.5'	270°	136.659"	18" HDPE	21.2"	Hole 24	24"	25.133"	3.18"	0"
Invert 3	516.01'	180°	91.106"	15" HDPE	17.6"	Hole 20	20"	20.629"	9.6"	0"
Invert 4	517.29'	80°	40.492"	4" HDPE (perf pipe)	4.8"	Hole 6	6"	6.016"	25.86"	0"
Invert 5										
Invert 6										
Invert 7										
Invert 8										

RIGHT-SIDE UP VIEW (int. dimensions)

UPSIDE-DOWN VIEW (int. dimensions)



INSIDE WALL DIMENSIONS



Coating (Int):
 Coating (Ext):

Seam Up: Flat
 Seam Dn: n/a

Wall Thickness: 5"
 Floor Height: 6"

Height (Int): 42"
 Height (Ext): 48"

Weight (Net): 3604 lb
 Volume (Net): 0.92cu.yd