

Job Name: 25-0201 INDOT R-43985-A Spencer Slide Correction
 Job Location: St. Meinrad, IN
 Contractor: Lutgring Bros.

Plant: Beaver Dam
 3/20/2026 8:32:24 AM

Tech: S. Felletter
 PC: A. Chambers



Structure ID: 12 Revised

P1 BX3030-06W08F-BAVF

BOX BASE 6inW, 8inF, Variable Ht F/n

- P2) 30" x 30" - CASTING HEIGHT - 0"
- P1) 30" x 30" - BOX BASE 6inW, 8inF, Variable Ht F/n - 42"
- 1) 30" x 30" - SGL 1"x14.5' Butyl
- 1) Hole - 26
- 1) Hole - 12

0 lb
 3905 lb
 0 lb
 0 lb
 0 lb

 0 lb
 Structure Total: 3905 lb

- Structure Notes:**
 INDOT STATE PROJECT
1. INDOT INLET TYPE E / ASTM C913 SPEC'S.
 2. CONCRETE = 4,000 PSI AT 28 DAYS.
 3. NO INVERT CHANNEL.
 4. INDOT TYPE 7 CASTING BY ICAST (R-4215-C).
 5. 34 1/2" X 34 1/2" x 1" DEEP RECESS IN TOP OF WALLS.

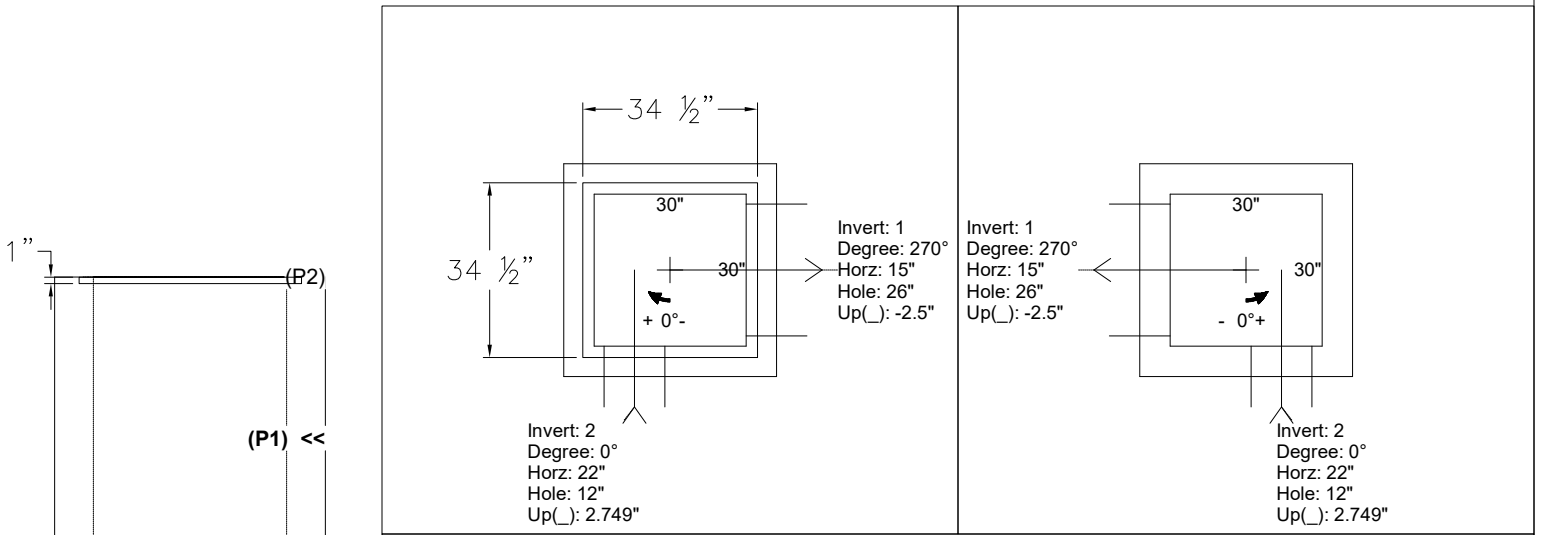
REINFORCING PER ASTM A615 (GRADE 60).
 - WALLS (As .31) #5 BARS AT 12" C.C.E.W.
 - FLOOR (As .31) #5 BARS AT 12" C.C.E.W.

Rim: 577.4' Rim to Invert: 3.53' Slack: 0.36" Sump: 0" Step Position:

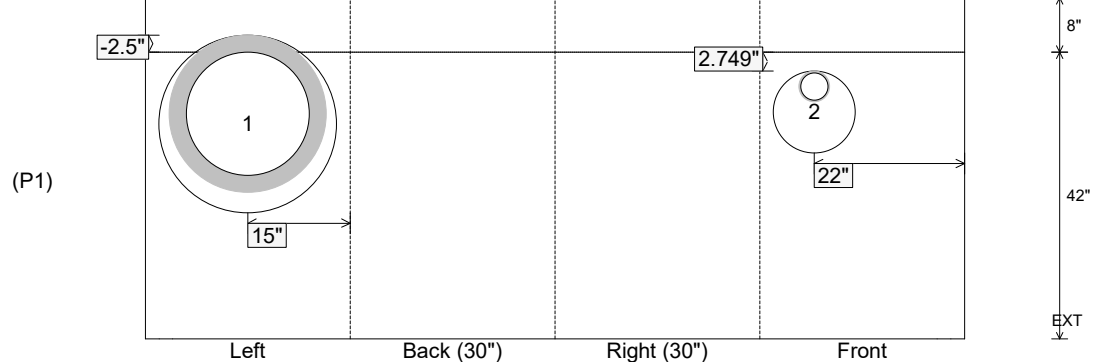
Position	Elev	Angle	Ext. (cw)	Pipe	Pipe OD	Connector	Hole	Horz Size	Up ()	Offset
Invert 1	573.87'	270°	21"	18" RCP B WALL	23"	Hole 26	26"	26"	-2.5"	0"
Invert 2	574.12'	0°	28"	4" PVC SCH40	4.5"	Hole 12	12"	12"	2.749"	7"
Invert 3										
Invert 4										
Invert 5										
Invert 6										
Invert 7										
Invert 8										

RIGHT-SIDE UP VIEW (int. dimensions)

UPSIDE-DOWN VIEW (int. dimensions)



INSIDE WALL DIMENSIONS



Coating (Int):
 Coating (Ext):

Seam Up: Flat
 Seam Dn: n/a

Wall Thickness: 6"
 Floor Height: 8"

Height (Int): 42"
 Height (Ext): 50"

Weight (Net): 3905 lb
 Volume (Net): 1cu.yd