

Job Name: 25-0199 - Countryview Stormwater Imp. Ph. 3 Sec. 1
 Job Location: Henderson, KY 42420
 Contractor: Koberstein Contracting, Inc.

Plant: Beaver Dam, KY
 10/20/2025 12:27:48 PM

Tech: K. Cardwell
 PC: E. Bradley



Structure ID: 204

P2 MH060LD08-24SQ

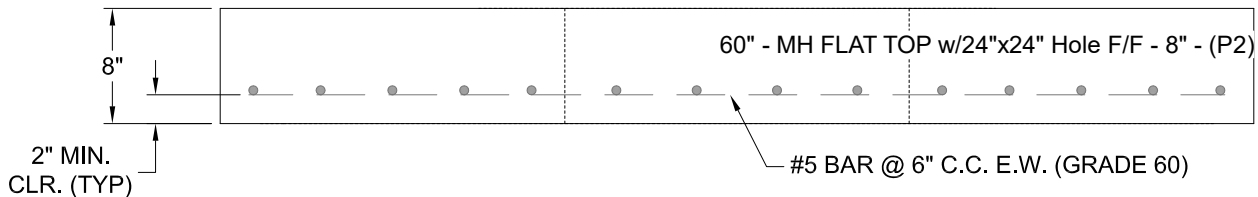
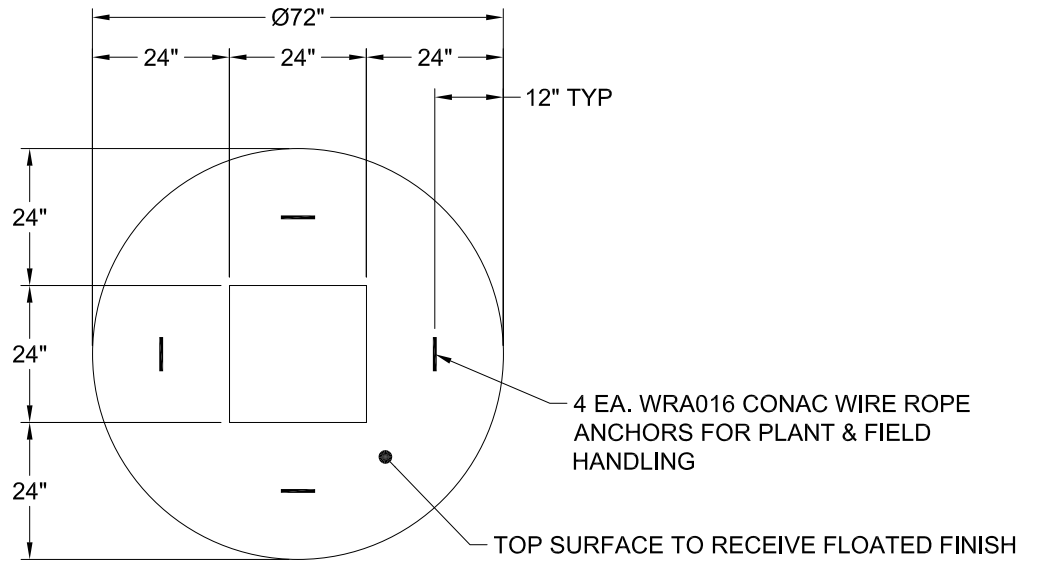
MH FLAT TOP w/24"x24" Hole F/F

- P3) 24" x 24" - CASTING HEIGHT - 6"
- P2) 60" - MH FLAT TOP w/24"x24" Hole F/F - 8"
- P1) 60" - MH BASE Custom Ht F/n - 68"
- 1) 60" - Conseal CS-102 1.00"
- 1) 24" x 24" - Conseal CS-102 1.00"
- 1) Hole - 38
- 1) Hole - 24
- 1) Hole - 30

0 lb
 2347 lb
 8619 lb
 0 lb
 0 lb
 0 lb
 0 lb
 0 lb

 Structure Total: 10965 lb

- Structure Notes:**
 STATION: 3+40 LN B
1. PER ASTM C-478 SPECS
 2. CONCRETE: 4,000 PSI AT 28 DAYS
 3. REINFORCEMENT: #5 BAR @ 6" C.C. E.W. (GRADE 60) - 2" MIN. REBAR CLEARANCE (TYP)
 4. NO STEPS
 5. 6" CASTING SUPPLIED BY OTHERS
 6. LIFTERS: 4 EA. WRA016 CONAC WIRE ROPE ANCHORS FOR PLANT & FIELD HANDLING



Coating (Int): Coating (Ext):	Seam Up: Flat Seam Dn: Flat	Wall Thickness: 6"	Height (Ext): 8"	Weight (Net): 2347 lb Volume (Net): 0.6cu.yd
----------------------------------	--------------------------------	--------------------	------------------	---