

Job Name: 25-0199 - Countryview Stormwater Imp. Ph. 3 Sec. 1  
 Job Location: Henderson, KY 42420  
 Contractor: Koberstein Contracting, Inc.

Plant: Beaver Dam, KY

Tech: K. Cardwell

10/20/2025 12:27:21 PM

PC: E. Bradley



**Structure ID: 106**

**P2 MH060RS36S**

**MH RISER SPECIAL T/G**

- P5) 24" - CASTING HEIGHT - 7"
- P4) 24" - GRADE RING F/F - 3"
- P3) 60" - MH FLAT TOP w/24" Ctr. Hole F/G - 13"
- P2) 60" - MH RISER SPECIAL T/G - 36"
- P1) 60" - MH BASE T/n - 54"
- 2) 60" - Conseal CS-102 1.00"
- 2) Hole - 38
- 2) Hole - 16

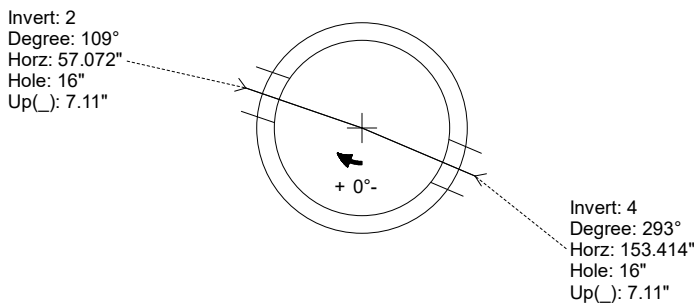
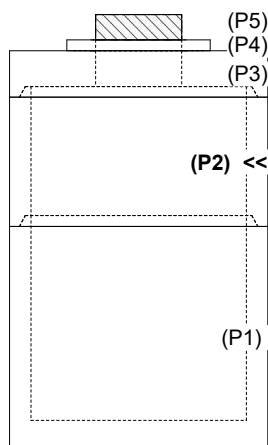
- 0 lb
- 202 lb
- 2674 lb
- 3554 lb
- 7151 lb
- 0 lb
- 0 lb
- 0 lb
- 
- Structure Total: 13580 lb

**Structure Notes:**  
 STATION: 3+84 LN A  
 1. PER ASTM C-478 SPECS  
 2. CONCRETE: 4,000 PSI AT 28 DAYS  
 3. REINFORCEMENT: PER ASTM A615  
 4. NO STEPS  
 5. 7" CASTING SUPPLIED BY OTHERS

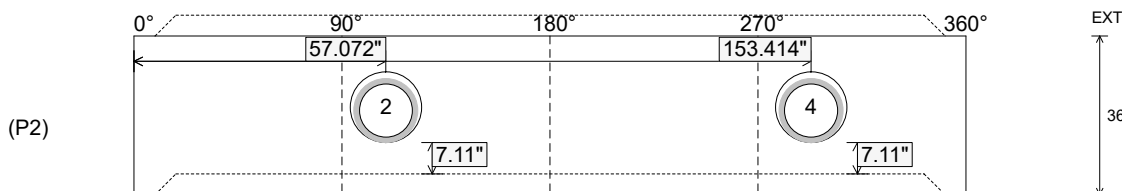
Rim: 377.81' Rim to Invert: 9.39' Slack: 2.23' Sump: 2.55" Step Position:

Position	Elev	Angle	Ext. (cw)	Pipe	Pipe OD	Connector	Hole	Horz Size	Up (")	Offset
Invert 1										
Invert 2	373.8'	109°	68.487"	12" ADS N-12	14.5"	Hole 16	16"	16.196"	7.11"	0"
Invert 3										
Invert 4	373.8'	293°	184.097"	12" ADS N-12	14.5"	Hole 16	16"	16.196"	7.11"	0"
Invert 5										
Invert 6										
Invert 7										
Invert 8										

**RIGHT-SIDE UP VIEW (int. dimensions)**



**INSIDE WALL DIMENSIONS**



Coating (Int):  
 Coating (Ext):

Seam Up: Tongue  
 Seam Dn: Groove

Wall Thickness: 6"  
 Floor Height: 0"

Height (Int): 36"  
 Height (Ext): 36"

Weight (Net): 3554 lb  
 Volume (Net): 0.91cu.yd