

Job Name: 25-0199 - Countryview Stormwater Imp. Ph. 3 Sec. 1
Job Location: Henderson, KY 42420
Contractor: Koberstein Contracting, Inc.

PC: E. Bradley
 TECH: K. Cardwell
 Plant: Beaver Dam, KY



Structure ID: 101
 Spec: Storm
 Type: STM.MH
 Size: 60"

Rim: 373'
 Invert: 366.36'
 Rim to Invert: 6.64'

Sump: 2.55"
 Floor (Top): 366.148'
 Floor Height: 8"

Floor (Bot): 365.481'
 Overall Height: 7.333'
 Slack: 2.23"

Structure Notes:
 STATION: 0+66 LN A
 1. PER ASTM C-478 SPECS
 2. CONCRETE: 4,000 PSI AT 28 DAYS
 3. REINFORCEMENT:
 - FLAT LID: #5 BAR @ 6" C.C. E.W. (GRADE 60)
 - BASE: PER ASTM A615
 4. NO STEPS
 5. 7" CASTING SUPPLIED BY OTHERS

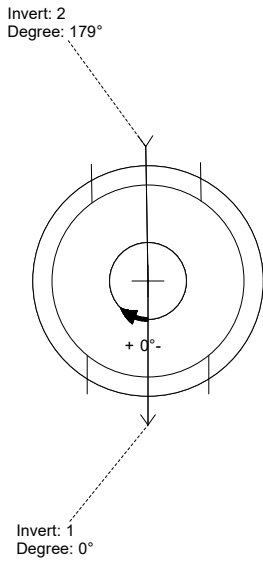
STRUCTURE SUMMARY:

P3) 24" - CASTING HEIGHT - 7"
 P2) 60" - MH FLAT TOP w/24" Ctr. Hole F/G - 13"
 P1) 60" - MH BASE T/n - 60"

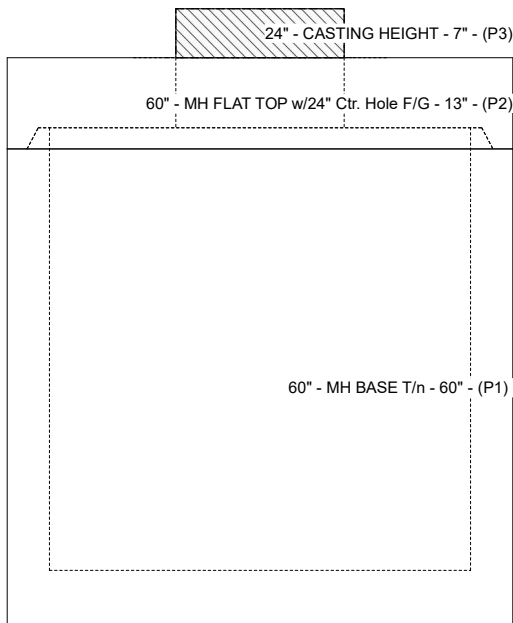
1) 60" - Conseal CS-102 1.00"
 1) Hole - 38
 1) Hole - 34

0 lb
 2674 lb
 7906 lb
 0 lb
 0 lb
 0 lb

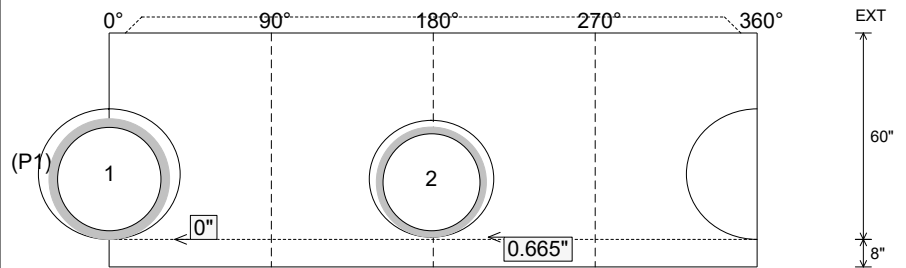
 0 lb
 Structure Total: 10580 lb



Position	Elev	Angle	Pipe	Pipe OD	Hole	Connector	Up ()	Ref
Rim	373'							
Reducer								
Invert 1	366.36'	0°	30" ADS N-12	35.1"	38"	Hole 38	0"	P1
Invert 2	366.36'	179°	30" C900 DR18	32"	34"	Hole 34	0.665"	P1
Invert 3								
Invert 4								
Invert 5								
Invert 6								
Invert 7								
Invert 8								



Cast (Int. Dim.) - Interior Dimensions



Submittal Drawing
 10/20/2025 12:20:38 PM

SUBMITTAL
 APPROVED BY: