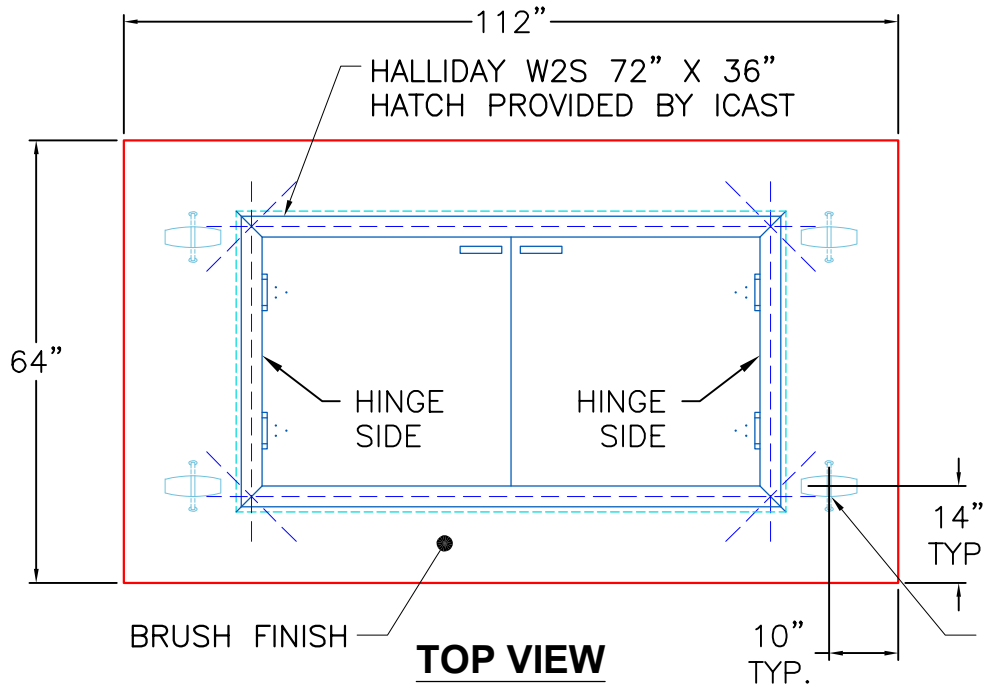
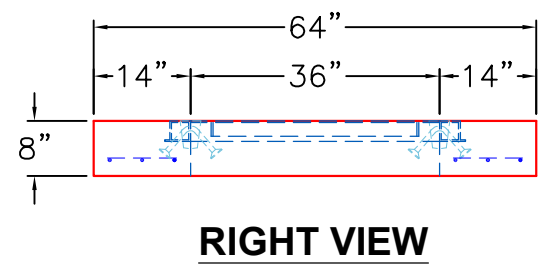
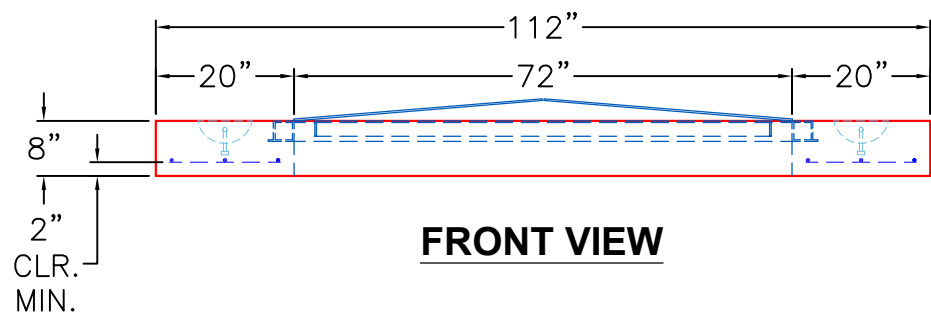



GENERAL NOTES:

1. MANUFACTURED TO ASTM C-913 (LATEST REVISION).
2. CONCRETE: 5,000 PSI AT 28 DAYS.
3. REINFORCING: #5 BAR @ 8" E.W. O.C. (GRADE 60).
4. WEIGHT: 3,072 LBS
5. HATCH: HALLIDAY W2S 72" X 36" HATCH PROVIDED BY ICAST.
6. HATCH TO BE CAST INTO THE TOP SLAB.
7. PRE-ASSEMBLY PROVIDED BY ICAST.



4 EA. CONAC 5CA14 ANCHORS CAST IN EACH SECTION AS SHOWN.



PRODUCTION WORK ORDER		PRODUCT I.D.: BX048096-08LD08S	DESCRIPTION: 64" X 112" X 8" THICK TOP SLAB	
	QUALITY CONTROL CHECKLIST		PRODUCT VIEW: RIGHT SIDE UP	
	<input type="checkbox"/> ALL DIMENSIONS CORRECT.		CUSTOMER: ENDESOL, INC.	
	<input type="checkbox"/> LIFTERS INSTALLED.		PROJECT: SUMNER CO REGIONAL TRANSMISSION LINE B	
	<input type="checkbox"/> HATCH LOCATED CORRECTLY.		STRUCTURE: MASTER METER VAULT	
	<input type="checkbox"/> REINFORCING CORRECT.		ORDER NO: 24-4406	
<input type="checkbox"/> SURFACE QUALITY ACCEPTABLE.		PC: C. GOFF		DRAWING: J. COPPAGE
<input type="checkbox"/> EDGES CHAMFERED.		DATE: 9/8/25		SCALE: NTS
<input type="checkbox"/> LIGHT BRUSHED FINISH ON TOP.		QC CHECK INITIALS:		PG. 1 of 1