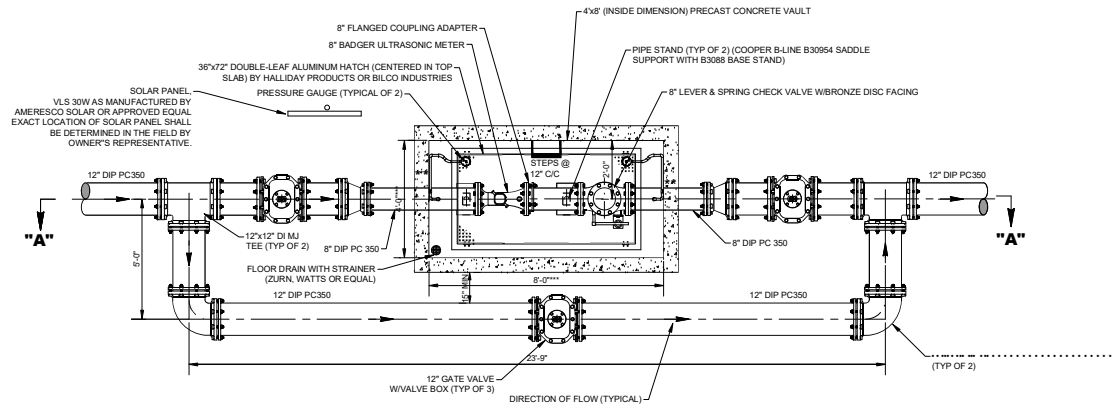
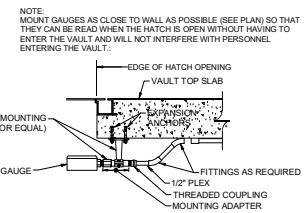
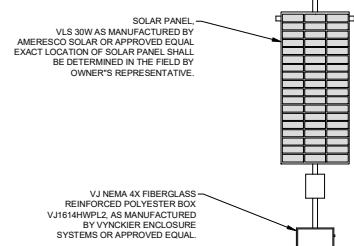


24-4406
 SUMNER CO REGIONAL TRANSMISSION LINE B
 MASTER METER VAULT

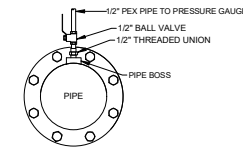


MASTER METER PLAN
 NOT TO SCALE

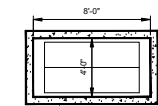
- * 5 PIPE DIAMETERS (20" MINIMUM REQUIRED BY METER MFR. BETWEEN METER AND NEXT OBSTRUCTION)
- ** WALL PENETRATION TO BE SEALED WITH LINK-SEAL
- *** 4'x8' (INSIDE DIMENSION) PRECAST CONCRETE VAULT



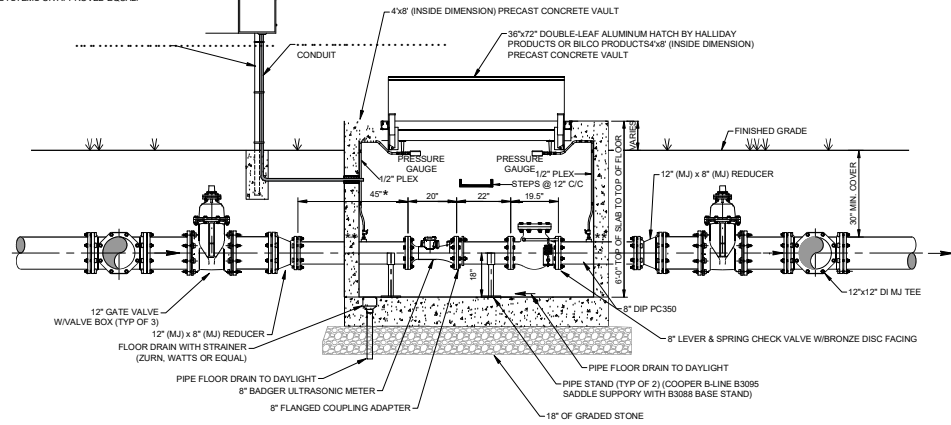
PRESSURE GAUGE MOUNTING DETAIL (TYP OF 2)
 NOT TO SCALE



PRESSURE GAUGE TAP DETAIL (TYP OF 2)
 NOT TO SCALE



METER VAULT LAYOUT
 NOT TO SCALE



SECTION "A"
 NOT TO SCALE

NOTE:
 MOUNT GAUGES AS CLOSE TO WALL AS POSSIBLE (SEE PLAN) SO THAT THEY CAN BE READ WHEN THE HATCH IS OPEN WITHOUT HAVING TO ENTER THE VAULT AND WILL NOT INTERFERE WITH PERSONNEL ENTERING THE VAULT.

HETHCOAT & DAVIS
 ENGINEERS
 PLANNERS



MASTER METER PLAN, SECTION AND DETAILS
 SUMNER COUNTY REGIONAL TRANSMISSION LINE "B"
 FUNDED AND ADMINISTERED BY THE
 STATE WATER INFRASTRUCTURE GRANTS PROGRAM
 PROJECT NUMBER 2022-59733
 CASTALIAN SPRINGS - BETHPAGE WATER UTILITY DISTRICT

DR.	REV.	DATE	DESCRIPTION

MP-1
 FILE NO. 1178-11

THIS DRAWING AND THE DESIGN SKETCH IS THE PROPERTY OF HETHCOAT & DAVIS, INC. THE REPRODUCTION, COPYING, OR USE OF THIS DRAWING WITHOUT THEIR WRITTEN PERMISSION IS STRICTLY PROHIBITED AND WILL BE SUBJECT TO LEGAL ACTION. COPYRIGHT © HETHCOAT & DAVIS, INC.