

Job Name: 24-4344 - LINCOLN LAKE DAM REHABILITATION
 Job Location: Lincoln City, IN
 Contractor: Omni Earthworks

Plant: 100

Tech: J. Horsley - F

10/30/2025 9:21:05 PM

PC: E. Bradley

Structure ID: SDMH 502

P3 MH060LD13-36CC

MH FLAT TOP w/36" Hole CTR F/G

- P4) 36" - CASTING HEIGHT - 6"
- P3) 60" - MH FLAT TOP w/36" Hole CTR F/G - 13"
- P2) 60" - MH RISER T/G - 36"
- P1) 60" - MH BASE Custom Ht T/n - 43"
- 1) CASTING - EJ ERGO XL Fr./Hinged Cover (41600521L01)
- 1) Conseal CS-102 1.00" (Double)
- 1) JOINT WRAP - 0.065"x6"x50' CONSEAL CS212
- 1) JOINT WRAP PRIMER - CONSEAL CS-75 (1 gal.)
- 2) PSX - 16M NYLO

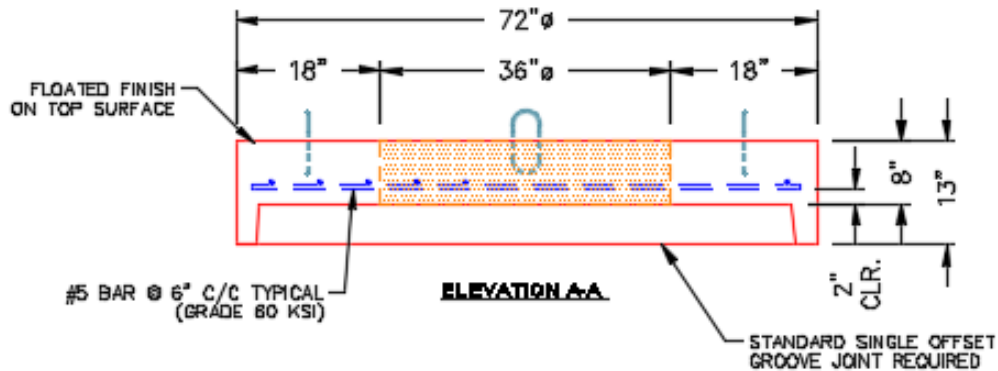
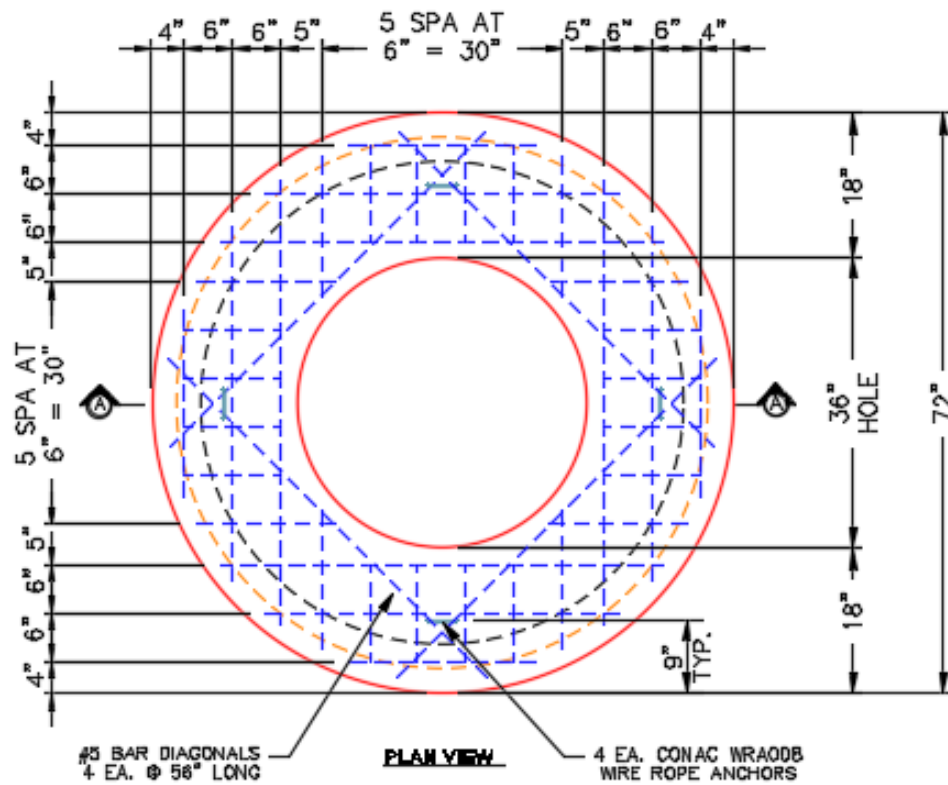
0 lb
 3331 lb
 3758 lb
 7018 lb
 250 lb
 0 lb
 0 lb
 0 lb
 0 lb
 16 lb

Structure Total: 14373 lb

Structure Notes:

1. PER ASTM C478 SPECIFICATIONS.
2. CONCRETE = 4,000 PSI AT 28 DAYS.
3. NO STEPS AND NO INVERT CHANNEL.
4. CASTING BY I-CAST (EJ ERGO XL Fr./HINGED COVER 41600521L01)).

REINFORCING PER ASTM A615 (GRADE 60)..
 - TOP SLAB (As .62) #5 BARS AT 6" C.C.E.W..
 - RISER/WALLS (As .18)
 - FLOOR (As .37) #5 BARS AT 10" C.C.E.W.



Coating (Int):
 Coating (Ext):

Seam Up: Flat
 Seam Dn: Groove

Wall Thickness: 6"

Height (Ext): 13"

Weight (Net): 3331 lb
 Volume (Net): 0.85cu.yd