

**Job Name: 24-4317C - Sumner Co Regional Transmission Line C**  
**Job Location: Gallatin, TN**  
**Contractor: Endesol, Inc.**

PC: E. Bradley  
 TECH: J. Horsley - F  
 Plant: 100



Structure ID: 4317C (2)

Spec: Vaults  
 Type: Valve Vault  
 Size: 48"

Rim: 800.58'  
 Invert: 796.5'  
 Rim to Invert: 4.08'

Sump: 27"  
 Floor (Top): 794.25'  
 Floor Height: 8"

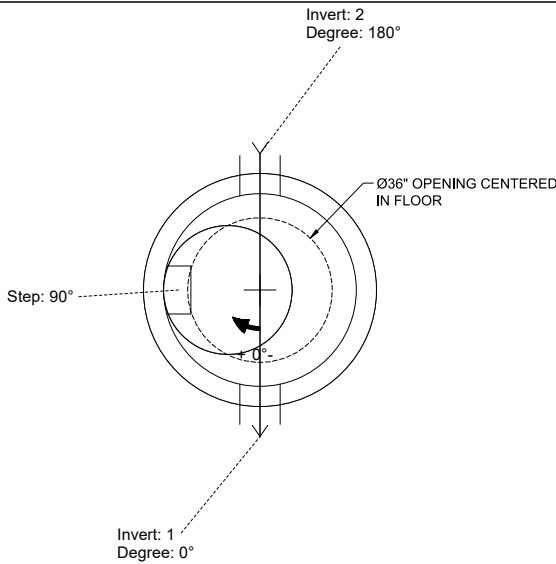
Floor (Bot): 793.583'  
 Overall Height: 6.917'  
 Slack: 0.96"

**Structure Notes:**

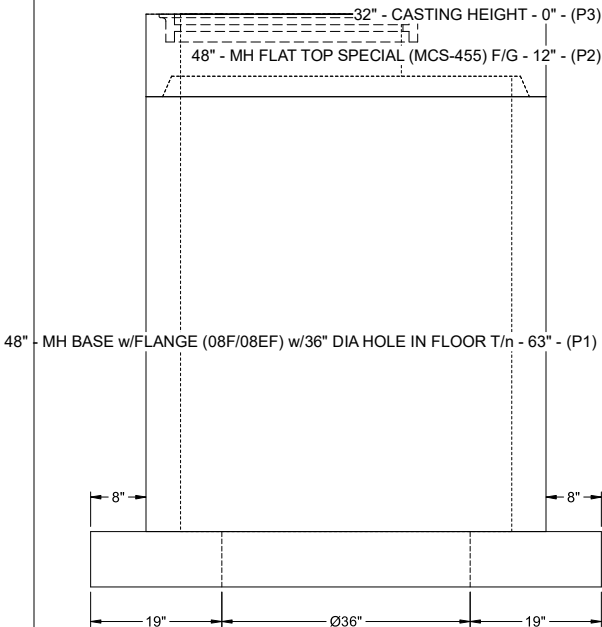
1. PER ASTM C-478 SPECIFICATIONS
2. CONCRETE: 4,500 PSI AT 28 DAYS
3. REINFORCEMENT:
  - FLAT LID: #4 BAR @ 10" C.C. E.W. (GRADE 60)
  - BASE: PER ASTM A615
4. NO STORM INVERT
5. STEPS AT 90 DEGREES
6. HOE MCS-455 FRAME & COVER "WATER" SUPPLIED BY ICAST - FRAME TO BE CAST INTO FLAT LID FLANGE SIDE UP
7. 36" DIA. OPENING CENTERED IN BASE FLOOR REQUIRED
8. SPECIAL PRE-ASSEMBLY OF INTERNAL COMPONENTS TO BE PERFORMED BY ICAST

**STRUCTURE SUMMARY:**

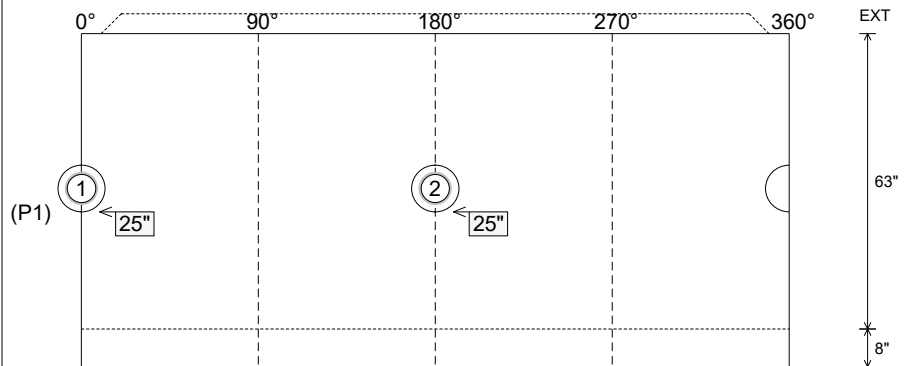
- P3) 32" - CASTING HEIGHT - 0" 0 lb
  - P2) 48" - MH FLAT TOP SPECIAL (MCS-455) F/G - 12" 1851 lb
  - P1) 48" - MH BASE w/FLANGE (08F/08EF) w/36" DIA HOLE IN FLOOR T/n - 63" 6538 lb
  - 1) This Structure Includes a Cast-in Item - HOE MCS-455 Frame Flange Side Up 0 lb
  - 1) SPECIAL Pre-Assembly of Internal Material Required 0 lb
  - 1) CASTING - HOE MCS-455 F/C Water 250 lb
  - 1) 48" - Conseal CS-102 1.00" (Double) 0 lb
  - 2) Hole - 10 0 lb
- Structure Total: 8639 lb



Position	Elev	Angle	Pipe	Pipe OD	Hole	Connector	Up (")	Ref
Rim	800.58'							
Reducer								
Invert 1	796.5'	0°	6" DI	6.875"	10"	Hole 10	25"	P1
Invert 2	796.5'	180°	6" DI	6.875"	10"	Hole 10	25"	P1
Invert 3								
Invert 4								
Invert 5								
Invert 6								
Invert 7								
Invert 8								

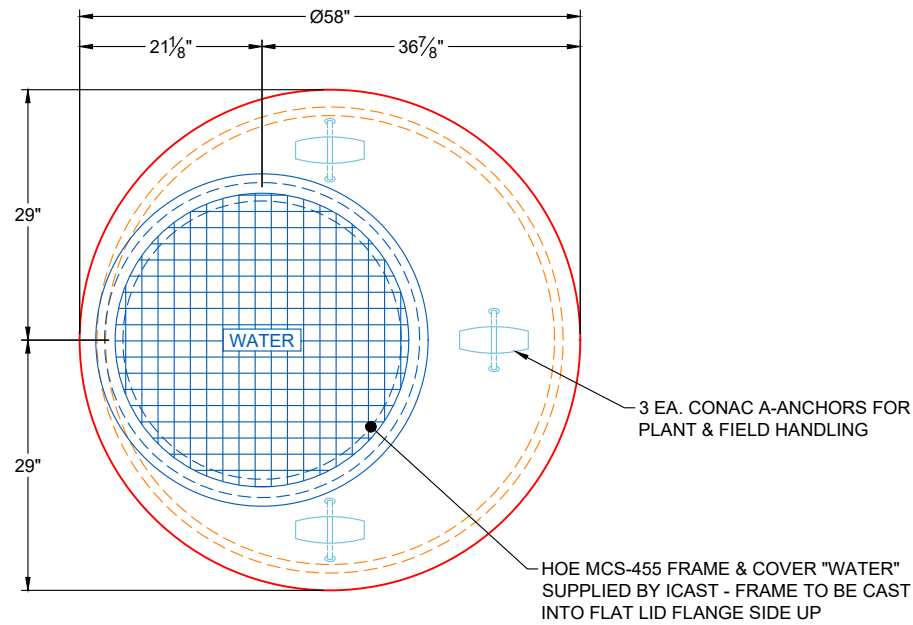


**Cast (Int. Dim.) - Interior Dimensions**



Submittal Drawing  
 2/27/2026 5:35:29 AM

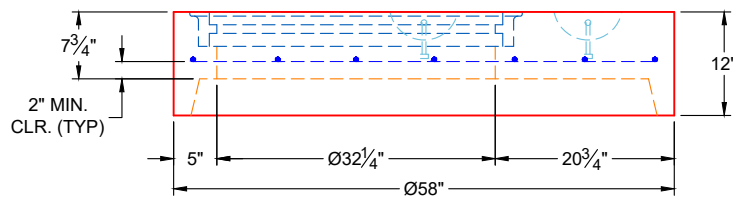
SUBMITTAL  
 APPROVED BY:



**PLAN VIEW**

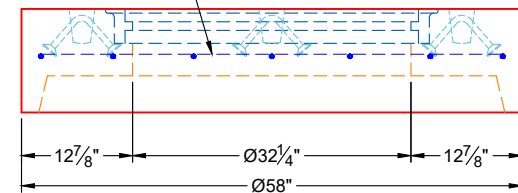
**GENERAL NOTES**

1. PER ASTM C-478 SPECIFICATIONS
2. CONCRETE: 5,000 PSI AT 28 DAYS
3. REINFORCEMENT: #4 BAR @ 10" C.C. E.W. (GRADE 60) - 2" MIN. REBAR CLEARANCE (TYP)
4. WEIGHT: 1,851 LBS
5. HOE MCS-455 FRAME & COVER "WATER" SUPPLIED BY ICAST - FRAME TO BE CAST INTO FLAT LID FLANGE SIDE UP



**FRONT VIEW**

#4 BAR @ 10" C.C. E.W. (GRADE 60)



**SIDE VIEW**

**REVISION INFORMATION**

REV. DATE: NO REVISIONS TO DATE



SUBMITTAL DRAWING: Ø48" MH FLAT LID SPECIAL, 12" HT.

CUSTOMER: ENDESOL, INC.

PROJECT: SUMNER CO REGIONAL TRANSMISSION LINE C

STRUCTURE: 4317C (2)

QUOTE/SALES ORDER NO: 24-4317C

CHECKED BY: B. SMITH

DRAWN BY: K. CARDWELL

DATE: 02/27/26

SCALE: NTS

PG. 1 OF 1