

Job Name: 24-4317C - Sumner Co Regional Transmission Line C
 Job Location: Gallatin, TN
 Contractor: Endesol, Inc.

Plant: 100

2/27/2026 5:50:52 AM

Tech: J. Horsley - F

PC: E. Bradley



Structure ID: 4317C (2)

P2 MH048LD12S

MH FLAT TOP SPECIAL (MCS-455) F/G

- P3) 32" - CASTING HEIGHT - 0"
- P2) 48" - MH FLAT TOP SPECIAL (MCS-455) F/G - 12"
- P1) 48" - MH BASE w/FLANGE (08F/08EF) w/36" DIA HOLE IN FLOOR T/n - 63"
- 1) This Structure Includes a Cast-in Item - HOE MCS-455 Frame Flange Side Up
- 1) SPECIAL Pre-Assembly of Internal Material Required
- 1) CASTING - HOE MCS-455 F/C Water
- 1) 48" - Conseal CS-102 1.00" (Double)
- 2) Hole - 10

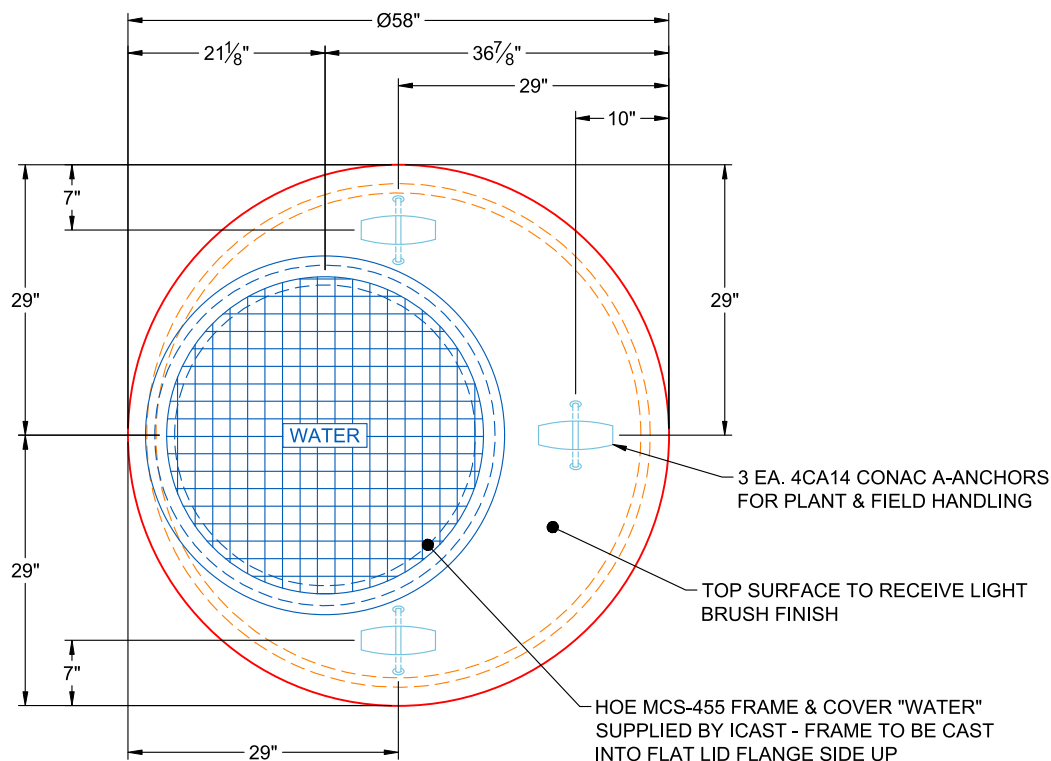
0 lb
 1851 lb
 6538 lb
 0 lb
 0 lb
 250 lb
 0 lb
 0 lb

 8639 lb

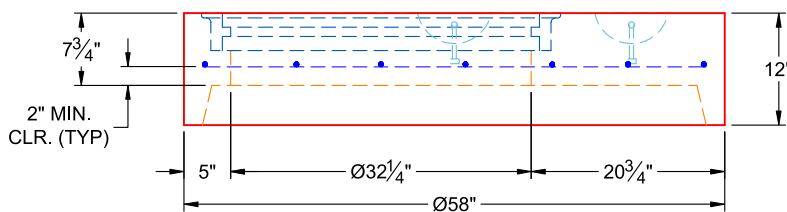
Structure Total:

Structure Notes:

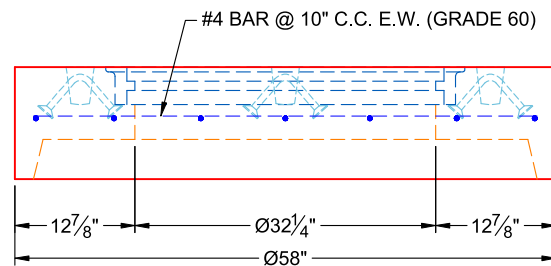
1. PER ASTM C-478 SPECIFICATIONS
2. CONCRETE: 4,500 PSI AT 28 DAYS
3. REINFORCEMENT: #4 BAR @ 10" C.C. E.W. (GRADE 60) - 2" MIN. REBAR CLEARANCE (TYP)
4. HOE MCS-455 FRAME & COVER "WATER" SUPPLIED BY ICAST - FRAME TO BE CAST INTO FLAT LID FLANGE SIDE UP
5. LIFTERS: 3 EA. 4CA14 CONAC A-ANCHORS FOR PLANT & FIELD HANDLING
6. TOP SURFACE TO RECEIVE LIGHT BRUSH FINISH



**PLAN VIEW
(RIGHT SIDE UP)**



**FRONT VIEW
(RIGHT SIDE UP)**



**SIDE VIEW
(RIGHT SIDE UP)**

Coating (Int):
 Coating (Ext):

Seam Up: Flat
 Seam Dn: Groove

Wall Thickness: 5"

Height (Ext): 12"

Weight (Net): 1851 lb
 Volume (Net): 0.47cu.yd

Job Number:

24-4317C

Job Name:

Sumner Co Regional Transmission
Line C

Structure:

4317C (2)

Note:

HOE MCS-455 Frame Supplied By
iCast To Be Cast Into Flat Lid Flange
Side Up