

Job Name: 24-4317C - Sumner Co Regional Transmission Line C
 Job Location: Gallatin, TN
 Contractor: Endesol, Inc.

Plant: 100

2/27/2026 5:50:33 AM

Tech: J. Horsley - F

PC: E. Bradley



Structure ID: 4317C (2)

P1 MH048BAEVF

MH BASE w/FLANGE (08F/08EF) w/36" DIA HOLE IN FLOOR T/n

- P3) 32" - CASTING HEIGHT - 0"
- P2) 48" - MH FLAT TOP SPECIAL (MCS-455) F/G - 12"
- P1) 48" - MH BASE w/FLANGE (08F/08EF) w/36" DIA HOLE IN FLOOR T/n - 63"
- 1) This Structure Includes a Cast-in Item - HOE MCS-455 Frame Flange Side Up
- 1) SPECIAL Pre-Assembly of Internal Material Required
- 1) CASTING - HOE MCS-455 F/C Water
- 1) 48" - Conseal CS-102 1.00" (Double)
- 2) Hole - 10

0 lb
 1851 lb
 6538 lb
 0 lb
 0 lb
 250 lb
 0 lb
 0 lb

 8639 lb

Structure Total: 8639 lb

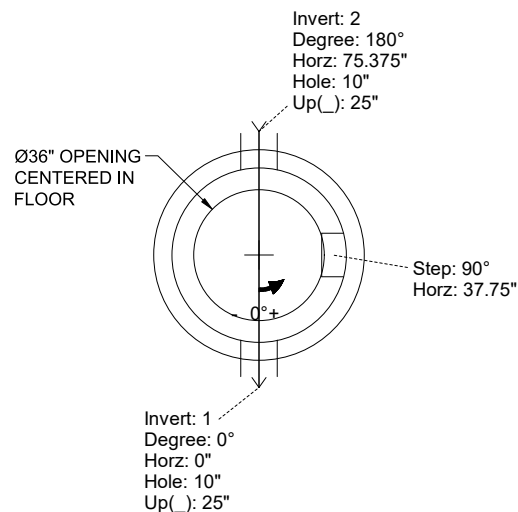
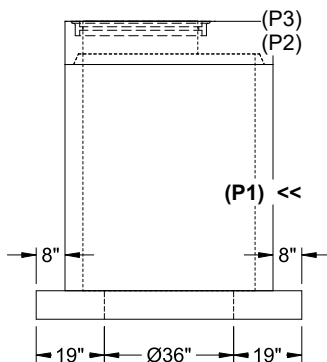
- Structure Notes:
1. PER ASTM C-478 SPECIFICATIONS
 2. CONCRETE: 4,500 PSI AT 28 DAYS
 3. REINFORCEMENT: PER ASTM A615
 4. NO STORM INVERT
 5. STEPS AT 90 DEGREES
 6. HOE MCS-455 FRAME & COVER "WATER" SUPPLIED BY ICAST - FRAME TO BE CAST INTO FLAT LID FLANGE SIDE UP
 7. 36" DIA. OPENING CENTERED IN BASE FLOOR REQUIRED
 8. SPECIAL PRE-ASSEMBLY OF INTERNAL COMPONENTS TO BE PERFORMED BY ICAST

Rim: 800.58' Rim to Invert: 4.08' Slack: 0.96" Sump: 27" Step Position: 90°

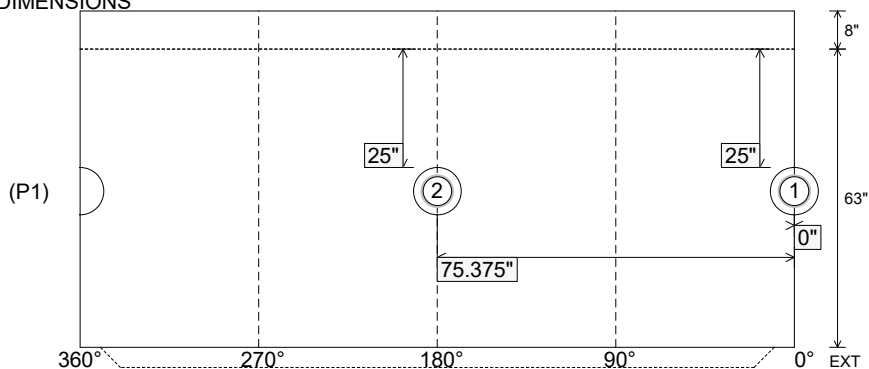
Position	Elev	Angle	Ext. (cw)	Pipe	Pipe OD	Connector	Hole	Horz Size	Up ()	Offset
Invert 1	796.5'	0°	0"	6" DI	6.875"	Hole 10	10"	10.074"	25"	0"
Invert 2	796.5'	180°	91.125"	6" DI	6.875"	Hole 10	10"	10.074"	25"	0"
Invert 3										
Invert 4										
Invert 5										
Invert 6										
Invert 7										
Invert 8										

RIGHT-SIDE UP VIEW (int. dimensions)

UPSIDE-DOWN VIEW (int. dimensions)



INSIDE WALL DIMENSIONS



Coating (Int):
 Coating (Ext):

Seam Up: Tongue
 Seam Dn: n/a

Wall Thickness: 5"
 Floor Height: 8"

Height (Int): 63"
 Height (Ext): 71"

Weight (Net): 6538 lb
 Volume (Net): 1.67cu.yd

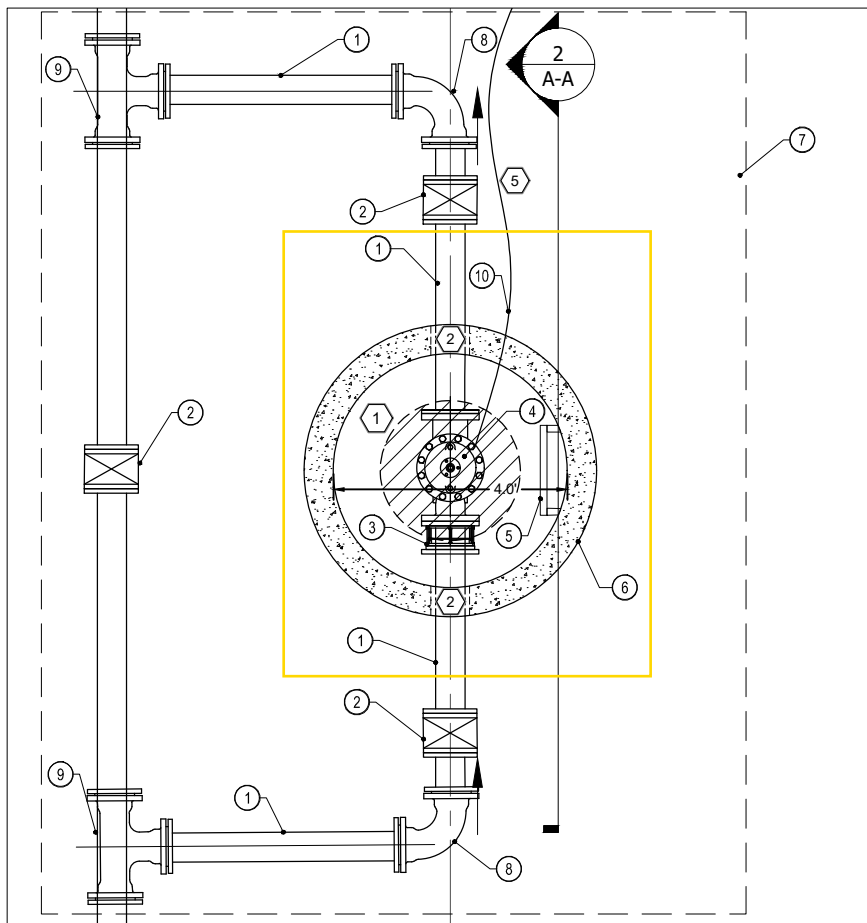
SPECIAL PRE-ASSEMBLY PERFORMED BY ICAST
JOB NUMBER: 24-4317C
STRUCTURE: 4317C (2)

EQUIPMENT AND PIPING SCHEDULE

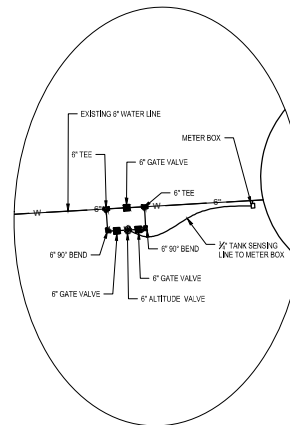
- ① 6" D.I. PIPE
- ② 6" GATE VALVE
- ③ 6" DISMANTLING JOINT
- ④ 6" DOUBLE ACTING ALTITUDE VALVE- CLA-VAL MODEL 210-16-HP
- ⑤ FIXED ACCESS STEPS
- ⑥ PROPOSED 4' DOGHOUSE MANHOLE
- ⑦ LUMP SUM ITEM
- ⑧ 6" M.J. 90° BEND
- ⑨ 6" M.J. TEE
- ⑩ 3/4" TANK SENSING LINE

CONSTRUCTION NOTES

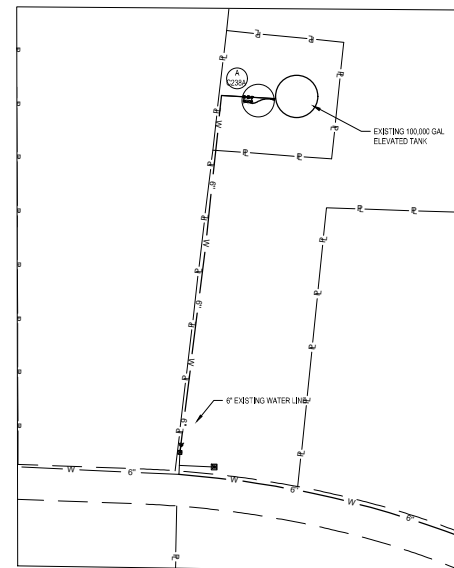
- ① ALL VAULT CONNECTIONS SHALL BE FLANGED & JOINED WITH 316 STAINLESS STEEL BOLTS.
- ② ALL YARD PIPING SHALL BE MJ (CL350) DIP, UNLESS OTHERWISE NOTED.
- ③ GROUT AND SEAL ALL WALL PENETRATIONS.
- ④ VALVE/PIPE SUPPORT AS REQUIRED.
- ⑤ INSTALL 3/4" TANK SENSING LINE AT BASE OF TANK. INSTALL METER BOX. SLOPE 2%. INCLUDE TEE AND 3/4" BALL VALVE TO FLUSH LINE AND RELEASE AIR AT HIGH POINT.



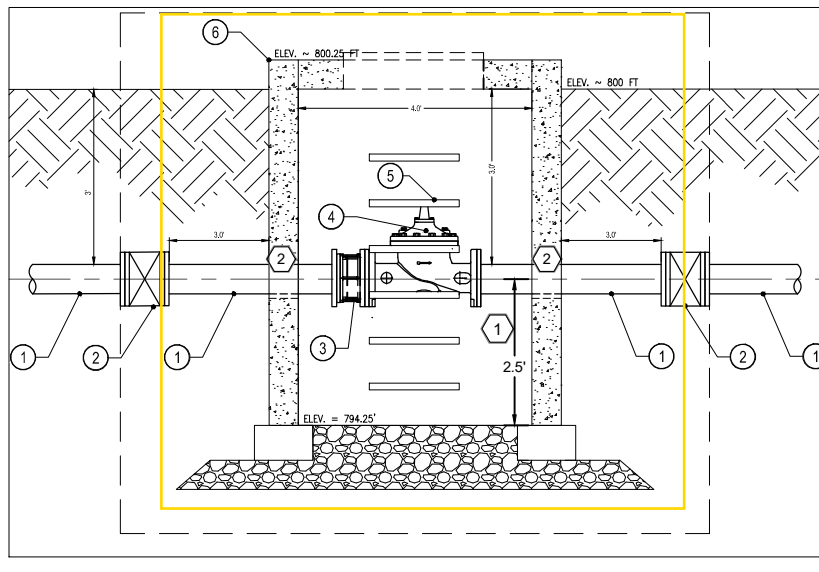
① PROPOSED ALTITUDE VALVE MANHOLE DETAIL
 1" = 1'-0"



② ALTITUDE VALVE ASSEMBLY
 SCALE: 1" = 10'-0"



SITE LAYOUT



② SECTION A - A
 1" = 1'-0"



REVISION	DATE

NO.	DATE	DESCRIPTION

CITY OF PORTLAND
 SUMNER COUNTY REGIONAL TRANSMISSION MAIN - LINE C
 ALTITUDE VALVE DETAILS