

Job Name: 24-4317 Sumner Co Regional Transmission Line C
 Job Location: Gallatin, TN
 Contractor: Endesol, Inc.

Plant: Beaver Dam

Tech: J. Coppage

12/9/2025 10:39:24 AM

PC: J. Jarvis



Structure ID: P202 FLOW CONTROL VAULT

P1 CVBVF

BOX BASE 6inW, 6inF, Variable Ht

- P3) 36" x 36" - CASTING HEIGHT - 0"
- P2) 60" x 72" - CB FLAT TOP 6"W w/36"x36" HATCH - 6"
- P1) 60" x 72" - BOX BASE 6inW, 6inF, Variable Ht - 60"
- 1) This Structure Includes a Cast-in Item
- 1) SECONDARY POUR
- 1) 60" x 72" - Conseal CS-102 1.00"
- 1) 36" x 36" - Conseal CS-102 1.00"
- 2) Hole - 14
- 2) Hole - 4
- 6) MH Step ML-10-TDS-NCR - 10"

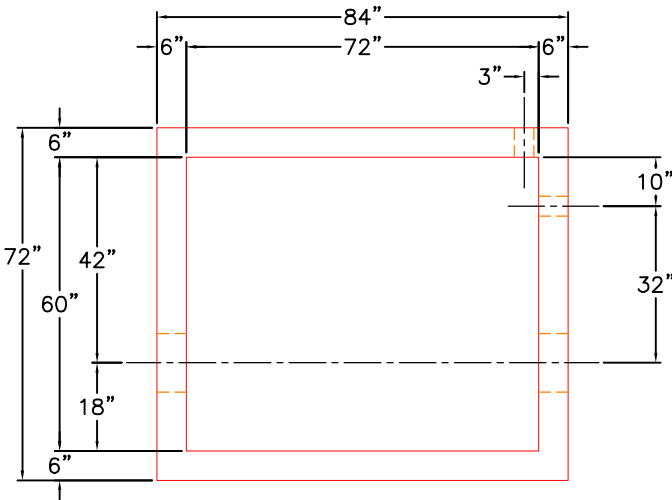
- Structure Notes:**
1. HALLIDAY W1S 36" X 36" HATCH BY ICAST.
 2. PER ASTM C913 SPECIFICATIONS.
 3. CONCRETE = 4,000 PSI AT 28 DAYS.
 4. REINFORCING PER ASTM A615 (GRADE 60).
 - TOP SLAB (As .62) #5 BARS AT 6" C.C.E.W.
 - WALLS (As .31) #5 BARS AT 12" C.C.E.W.
 - FLOOR (As .31) #5 BARS AT 12" C.C.E.W..

Structure Total: 13970 lb

Rim: 747' Rim to Invert: 5.5' Slack: -0.002" Sump: 0" Step Position: 270

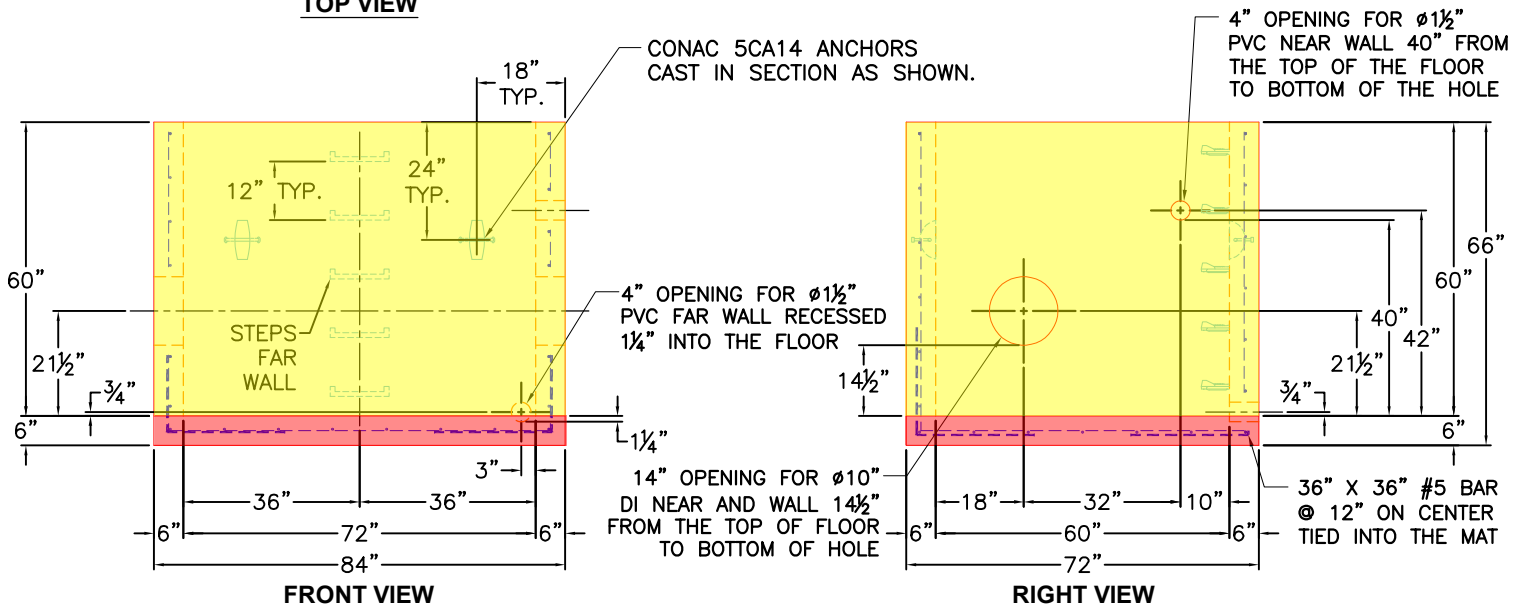
GENERAL NOTES:

1. MANUFACTURED TO ASTM C-913 (LATEST REVISION).
2. CONCRETE: 5,000 PSI AT 28 DAYS.
3. REINFORCING: #5 BAR @ 12" O.C.E.W.
4. WEIGHTS
 - FIRST POUR = 4,060 LBS
 - SECOND POUR = 5,185 LBS
 - TOTAL = 11,577 LBS



TOP VIEW

FIRST POUR DRAWING



Coating (Int): Coating (Ext):	Seam Up: Flat Seam Dn: n/a	Wall Thickness: 6" Floor Height: 6"	Height (Int): 60" Height (Ext): 66"	Weight (Net): 11577 lb Volume (Net): 2.96cu.yd
----------------------------------	-------------------------------	--	--	---

Job Name: 24-4317 Sumner Co Regional Transmission Line C
 Job Location: Gallatin, TN
 Contractor: Endesol, Inc.

Plant: Beaver Dam

12/9/2025 10:39:24 AM

Tech: J. Coppage

PC: J. Jarvis



Structure ID: P202 FLOW CONTROL VAULT

P1 CVBVF

BOX BASE 6inW, 6inF, Variable Ht

- P3) 36" x 36" - CASTING HEIGHT - 0"
- P2) 60" x 72" - CB FLAT TOP 6"W w/36"x36" HATCH - 6"
- P1) 60" x 72" - BOX BASE 6inW, 6inF, Variable Ht - 60"

- 1) This Structure Includes a Cast-in Item
- 1) SECONDARY POUR
- 1) 60" x 72" - Conseal CS-102 1.00"
- 1) 36" x 36" - Conseal CS-102 1.00"
- 2) Hole - 14
- 2) Hole - 4
- 6) MH Step ML-10-TDS-NCR - 10"

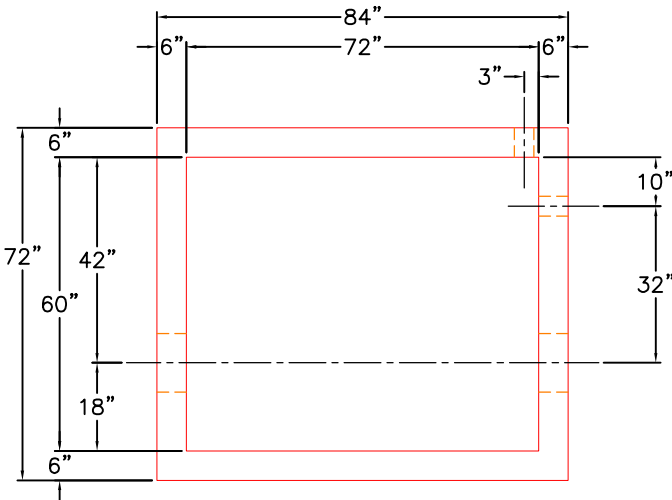
- Structure Notes:
- 1. HALLIDAY W1S 36" X 36" HATCH BY ICAST.
 - 2. PER ASTM C913 SPECIFICATIONS.
 - 3. CONCRETE = 4,000 PSI AT 28 DAYS.
 - 4. REINFORCING PER ASTM A615 (GRADE 60).
 - TOP SLAB (As .62) #5 BARS AT 6" C.C.E.W.
 - WALLS (As .31) #5 BARS AT 12" C.C.E.W.
 - FLOOR (As .31) #5 BARS AT 12" C.C.E.W..

Structure Total: 13970 lb

Rim: 747' Rim to Invert: 5.5' Slack: -0.002" Sump: 0" Step Position: 270

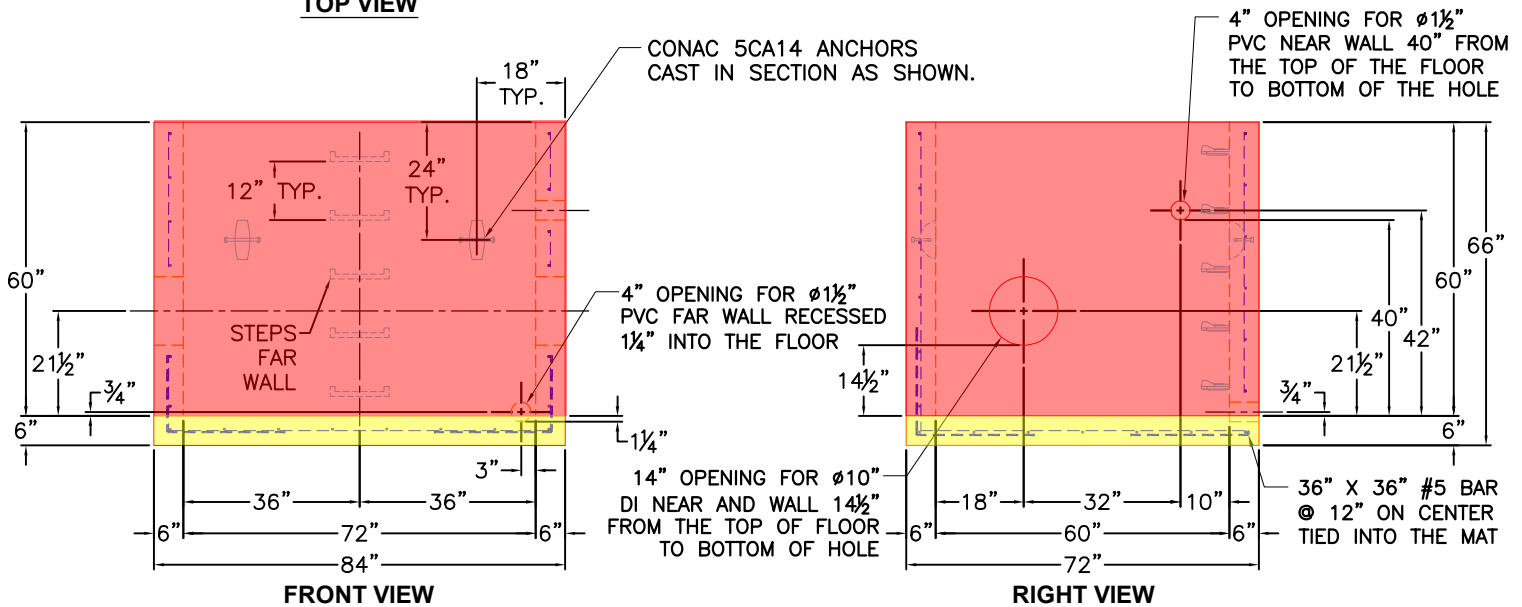
GENERAL NOTES:

- 1. MANUFACTURED TO ASTM C-913 (LATEST REVISION).
- 2. CONCRETE: 5,000 PSI AT 28 DAYS.
- 3. REINFORCING: #5 BAR @ 12" O.C.E.W
- 4. WEIGHTS
 - FIRST POUR = 4,060 LBS
 - SECOND POUR = 5,185 LBS
 - TOTAL = 11,577 LBS



TOP VIEW

SECOND POUR DRAWING



FRONT VIEW

RIGHT VIEW

Coating (Int): Coating (Ext):	Seam Up: Flat Seam Dn: n/a	Wall Thickness: 6" Floor Height: 6"	Height (Int): 60" Height (Ext): 66"	Weight (Net): 11577 lb Volume (Net): 2.96cu.yd
----------------------------------	-------------------------------	--	--	---