

Job Name: 24-4317 Sumner Co Regional Transmission Line C
 Job Location: Gallatin, TN
 Contractor: Endesol, Inc.

Plant: Beaver Dam

12/9/2025 10:40:37 AM

Tech: J. Coppage

PC: J. Jarvis



Structure ID: 8IN FLOW METER VAULT

P2 BX048048-06LD06S

CB FLAT TOP 6"W w/36"x36" HATCH

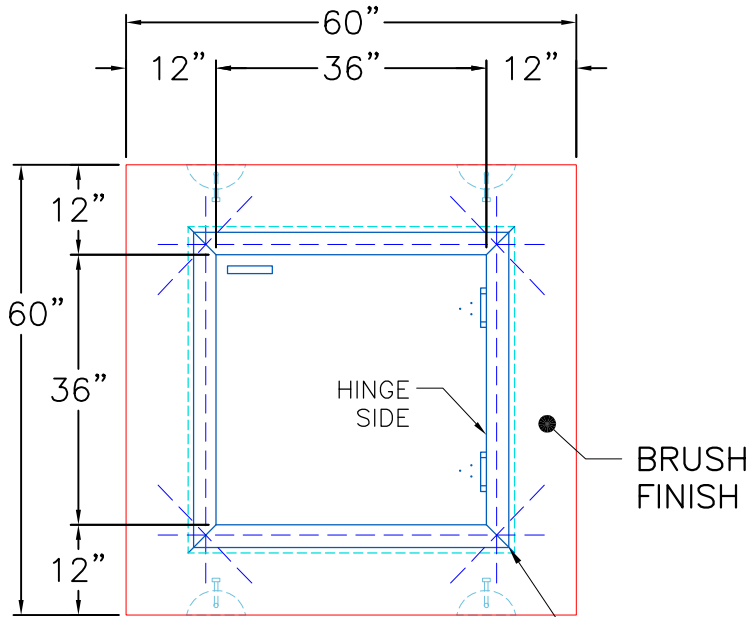
- P3) 36" x 36" - CASTING HEIGHT - 0"
- P2) 48" x 48" - CB FLAT TOP 6"W w/36"x36" HATCH - 6"
- P1) 48" x 48" - BOX BASE 6inW, 6inF, Variable Ht - 60"
- 1) This Structure Includes a Cast-in Item
- 1) SECONDARY POUR
- 1) 48" x 48" - Conseal CS-102 1.00"
- 1) 36" x 36" - Conseal CS-102 1.00"
- 2) Hole - 12
- 3) Hole - 4
- 6) MH Step ML-10-TDS-NCR - 10"

- Structure Notes:
1. HALLIDAY W1S 36" X 36" HATCH BY ICAST.
 2. PER ASTM C913 SPECIFICATIONS.
 3. CONCRETE = 4,000 PSI AT 28 DAYS.
 4. REINFORCING PER ASTM A615 (GRADE 60).
 - TOP SLAB (As .62) #5 BARS AT 6" C.C.E.W.
 - WALLS (As .31) #5 BARS AT 12" C.C.E.W.
 - FLOOR (As .31) #5 BARS AT 12" C.C.E.W..

Structure Total: 9365 lb

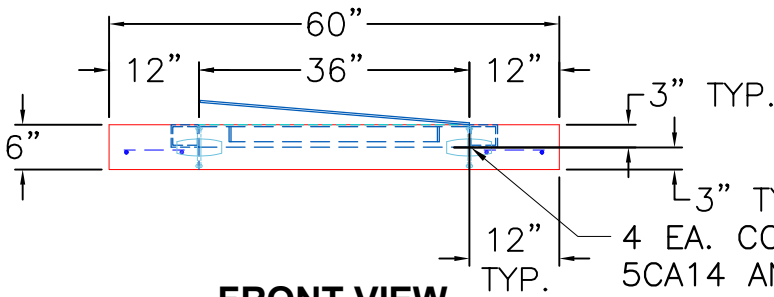
GENERAL NOTES:

1. MANUFACTURED TO ASTM C-913 (LATEST REVISION).
2. CONCRETE: 5,000 PSI AT 28 DAYS.
3. REINFORCING: #5 BAR @ 6" O.C.E.W
4. WEIGHT 1,160 LBS
5. HALLIDAY W1S 36" X 36" HATCH PROVIDED BY ICAST.
6. HATCH TO BE CAST INTO TOP SLAB.

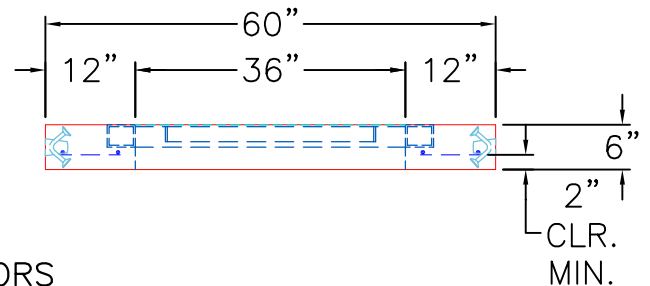


TOP VIEW

36" X 36" HALLIDAY W1S CAST INTO TOP SUPPLIED BY ICAST



FRONT VIEW



RIGHT VIEW

Coating (Int):
Coating (Ext):

Seam Up: Flat
Seam Dn: Flat

Wall Thickness: 6"

Height (Ext): 6"

Weight (Net): 1160 lb
Volume (Net): 0.3cu.yd