

Job Name: 24-4317 Sumner Co Regional Transmission Line C
 Job Location: Gallatin, TN
 Contractor: Endesol, Inc.

Plant: Beaver Dam

Tech: J. Coppage

12/9/2025 10:39:25 AM

PC: J. Jarvis



Structure ID: 8IN FLOW METER VAULT

P1 BX4848-06BAVF

BOX BASE 6inW, 6inF, Variable Ht

- P3) 36" x 36" - CASTING HEIGHT - 0"
- P2) 48" x 48" - CB FLAT TOP 6"W w/36"x36" HATCH - 6"
- P1) 48" x 48" - BOX BASE 6inW, 6inF, Variable Ht - 60"
- 1) This Structure Includes a Cast-in Item
- 1) SECONDARY POUR
- 1) 48" x 48" - Conseal CS-102 1.00"
- 1) 36" x 36" - Conseal CS-102 1.00"
- 2) Hole - 12
- 3) Hole - 4
- 6) MH Step ML-10-TDS-NCR - 10"

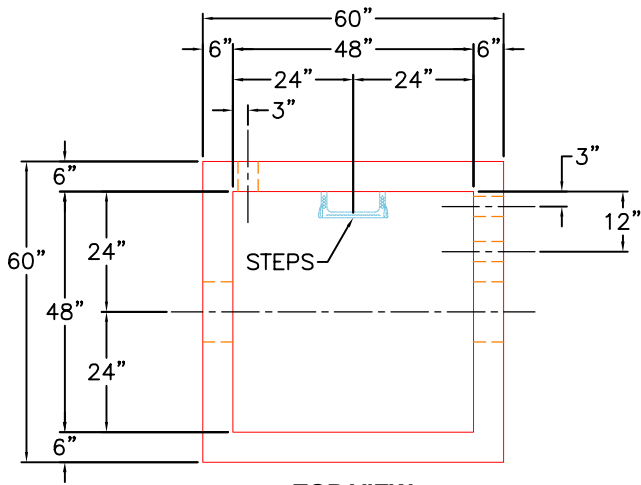
- Structure Notes:**
1. HALLIDAY W1S 36" X 36" HATCH BY ICAST.
 2. PER ASTM C913 SPECIFICATIONS.
 3. CONCRETE = 4,000 PSI AT 28 DAYS.
 4. REINFORCING PER ASTM A615 (GRADE 60).
 - TOP SLAB (As .62) #5 BARS AT 6" C.C.E.W.
 - WALLS (As .31) #5 BARS AT 12" C.C.E.W.
 - FLOOR (As .31) #5 BARS AT 12" C.C.E.W.

Structure Total: 9365 lb

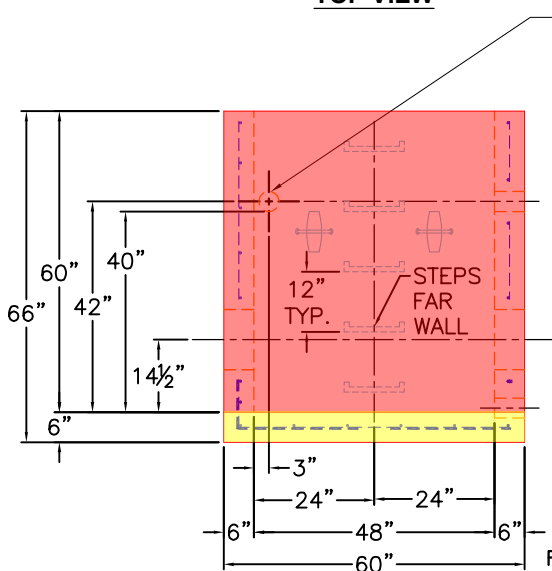
Rim: 746.5' Rim to Invert: 5.5' Slack: -0.002" Sump: 0" Step Position: 270°

GENERAL NOTES:

1. MANUFACTURED TO ASTM C-913 (LATEST REVISION).
2. CONCRETE: 5,000 PSI AT 28 DAYS.
3. REINFORCING: #5 BAR @ 12" O.C.E.W.
4. WEIGHTS
 - FIRST POUR = 1,813 LBS
 - SECOND POUR = 6,392 LBS
 - TOTAL = 8,205 LBS

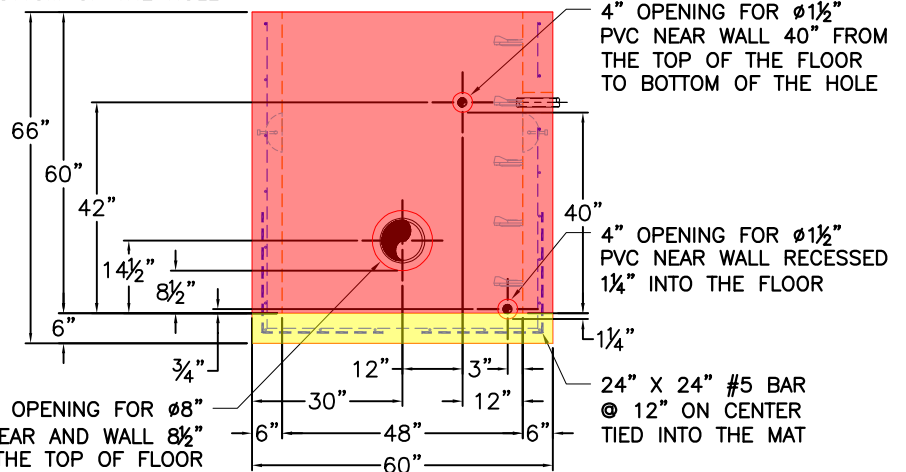


FIRST POUR DRAWING



FRONT VIEW

4" OPENING FOR $\phi 1\frac{1}{2}$ " PVC FAR WALL 40" FROM THE TOP OF THE FLOOR TO BOTTOM OF THE HOLE



RIGHT VIEW

4" OPENING FOR $\phi 1\frac{1}{2}$ " PVC NEAR WALL 40" FROM THE TOP OF THE FLOOR TO BOTTOM OF THE HOLE

4" OPENING FOR $\phi 1\frac{1}{2}$ " PVC NEAR WALL RECESSED $1\frac{1}{4}$ " INTO THE FLOOR

12" OPENING FOR $\phi 8$ " DI NEAR AND WALL $8\frac{1}{2}$ " FROM THE TOP OF FLOOR TO BOTTOM OF HOLE

24" X 24" #5 BAR @ 12" ON CENTER TIED INTO THE MAT

Coating (Int):
Coating (Ext):

Seam Up: Flat
Seam Dn: n/a

Wall Thickness: 6"
Floor Height: 6"

Height (Int): 60"
Height (Ext): 66"

Weight (Net): 8205 lb
Volume (Net): 2.1cu.yd

Job Name: 24-4317 Sumner Co Regional Transmission Line C
 Job Location: Gallatin, TN
 Contractor: Endesol, Inc.

Plant: Beaver Dam

Tech: J. Coppage

12/9/2025 10:39:25 AM

PC: J. Jarvis



Structure ID: 8IN FLOW METER VAULT

P1 BX4848-06BAVF

BOX BASE 6inW, 6inF, Variable Ht

- P3) 36" x 36" - CASTING HEIGHT - 0"
- P2) 48" x 48" - CB FLAT TOP 6"W w/36"x36" HATCH - 6"
- P1) 48" x 48" - BOX BASE 6inW, 6inF, Variable Ht - 60"
- 1) This Structure Includes a Cast-in Item
- 1) SECONDARY POUR
- 1) 48" x 48" - Conseal CS-102 1.00"
- 1) 36" x 36" - Conseal CS-102 1.00"
- 2) Hole - 12
- 3) Hole - 4
- 6) MH Step ML-10-TDS-NCR - 10"

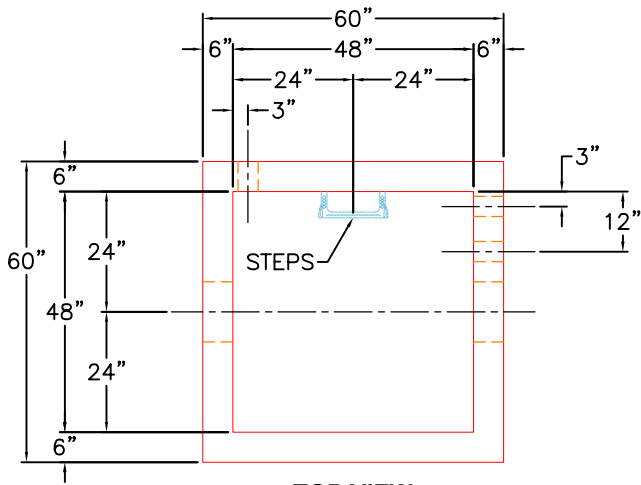
- Structure Notes:
1. HALLIDAY W1S 36" X 36" HATCH BY ICAST.
 2. PER ASTM C913 SPECIFICATIONS.
 3. CONCRETE = 4,000 PSI AT 28 DAYS.
 4. REINFORCING PER ASTM A615 (GRADE 60).
 - TOP SLAB (As .62) #5 BARS AT 6" C.C.E.W.
 - WALLS (As .31) #5 BARS AT 12" C.C.E.W.
 - FLOOR (As .31) #5 BARS AT 12" C.C.E.W.

Structure Total: 9365 lb

Rim: 746.5' Rim to Invert: 5.5' Slack: -0.002' Sump: 0' Step Position: 270°

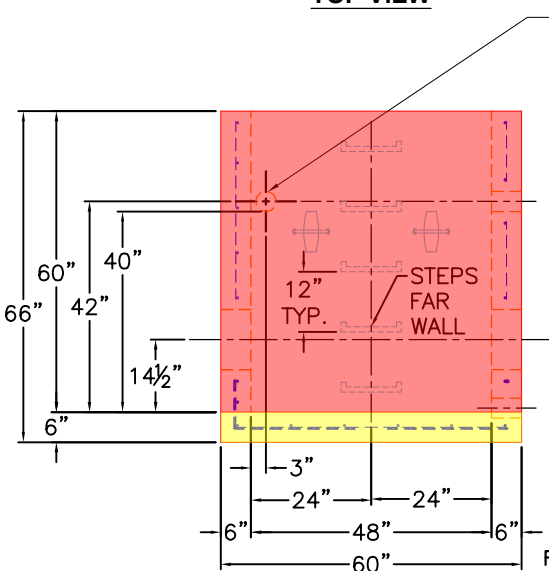
GENERAL NOTES:

1. MANUFACTURED TO ASTM C-913 (LATEST REVISION).
2. CONCRETE: 5,000 PSI AT 28 DAYS.
3. REINFORCING: #5 BAR @ 12" O.C.E.W
4. WEIGHTS
 - FIRST POUR = 1,813 LBS
 - SECOND POUR = 6,392 LBS
 - TOTAL = 8,205 LBS



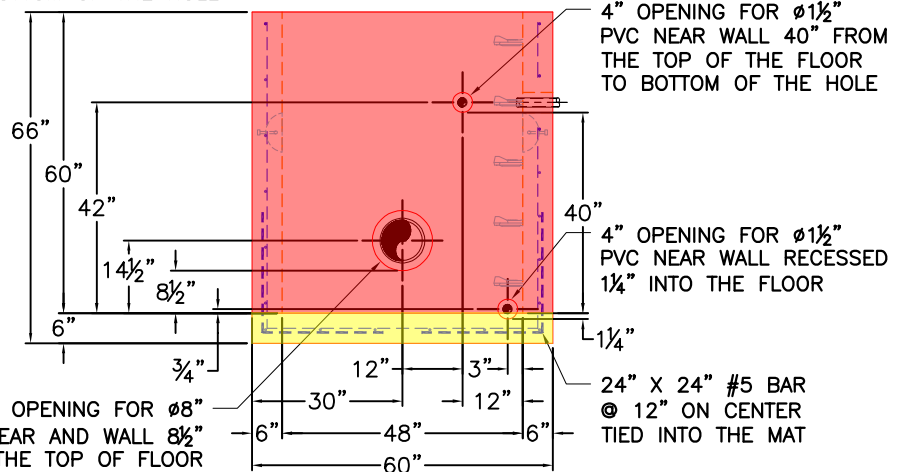
TOP VIEW

SECOND POUR DRAWING



FRONT VIEW

4" OPENING FOR $\phi 1\frac{1}{2}$ " PVC FAR WALL 40" FROM THE TOP OF THE FLOOR TO BOTTOM OF THE HOLE



RIGHT VIEW

4" OPENING FOR $\phi 1\frac{1}{2}$ " PVC NEAR WALL 40" FROM THE TOP OF THE FLOOR TO BOTTOM OF THE HOLE

4" OPENING FOR $\phi 1\frac{1}{2}$ " PVC NEAR WALL RECESSED $1\frac{1}{4}$ " INTO THE FLOOR

12" OPENING FOR $\phi 8$ " DI NEAR AND WALL $8\frac{1}{2}$ " FROM THE TOP OF FLOOR TO BOTTOM OF HOLE

24" X 24" #5 BAR @ 12" ON CENTER TIED INTO THE MAT

Coating (Int):
Coating (Ext):

Seam Up: Flat
Seam Dn: n/a

Wall Thickness: 6"
Floor Height: 6"

Height (Int): 60"
Height (Ext): 66"

Weight (Net): 8205 lb
Volume (Net): 2.1cu.yd