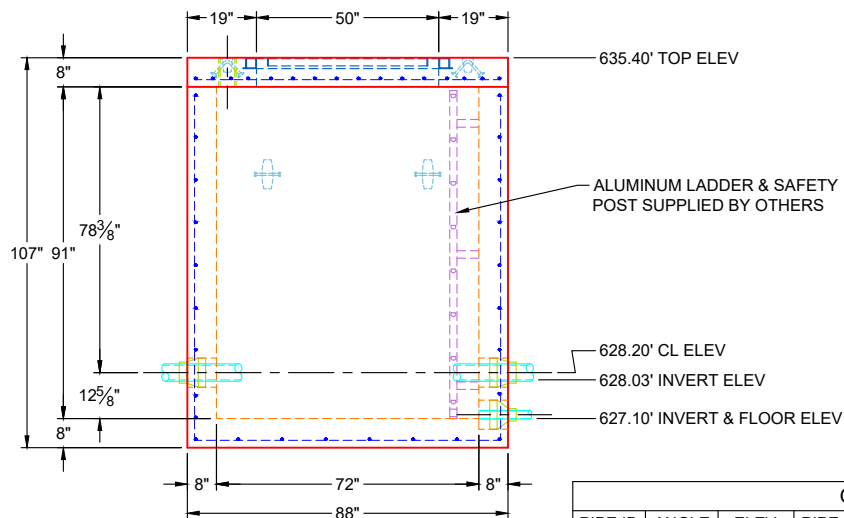
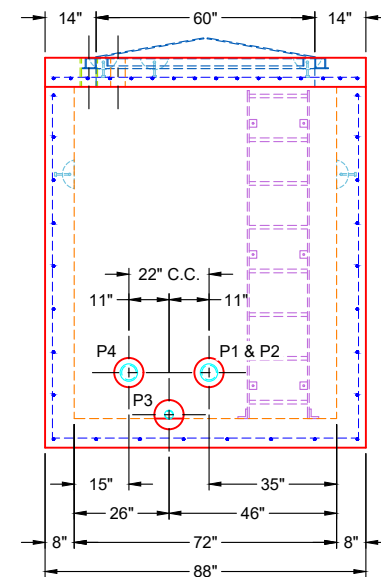


PLAN VIEW



FRONT VIEW

OPENINGS					
PIPE ID	ANGLE	ELEV	PIPE SIZE & TYPE	CONNECTOR	HOLE SIZE
P1	0	628.03	4" DUCTILE	PSX 8QRS-S ND	Ø8"
P2	180	628.03	4" DUCTILE	PSX 8QRS-S ND	Ø8"
P3	180	627.10	2" PVC SCH 40	PSX 8QRS-S ND	Ø8"
P4	180	628.03	4" DUCTILE	PSX 8QRS-S ND	Ø8"



SIDE VIEW

GENERAL NOTES:

1. MANUFACTURED TO ASTM C-913 (LATEST REVISION).
2. CONCRETE: 5,000 PSI AT 28 DAYS
3. REINFORCEMENT
- FLAT LID: #5 BAR @ 6" C.C. E.W. (GRADE 60)
- BASE: #5 BAR @ 12" C.C. E.W. (GRADE 60)
4. WEIGHTS:
8" FLAT LID 5,163 LBS
91" BASE 24,641 LBS
TOTAL WEIGHT 29,804 LBS
5. CONTRACTOR TO VERIFY ALL DIMENSIONS BEFORE MANUFACTURE
6. 50" X 60" HATCH SUPPLIED BY OTHERS - HATCH TO BE CAST INTO FLAT LID
7. ALUMINUM LADDER & SAFETY POST SUPPLIED BY OTHERS
8. 4" DUCTILE IRON VENT PIPE SUPPLIED BY OTHERS - TO BE CAST INTO FLAT LID
9. ADJUSTMENT / SLACK: 0.6"
10. JOINT SEALANT: CONSEAL CS-102 - 1" (PRIMARY & SECONDARY ROWS)
EXTERIOR WRAP: CONSEAL CS-212 - 12" WIDE
11. EXTERIOR BITUMINOUS COATING (CS-55) REQUIRED

REVISION INFORMATION

REV. DATE: NO REVISIONS TO DATE



SUBMITTAL DRAWING: 72" X 72" VALVE VAULT W/ EXT. COATING

CUSTOMER: TRC, LLC

PROJECT: OHIO RIVER SERVICE AREA REHAB

STRUCTURE: CLIFFWOOD DR VALVE VAULT

QUOTE/SALES ORDER NO: 24-4112

CHECKED BY: B. SMITH

DRAWN BY: K. CARDWELL

DATE: 01/20/26

SCALE: NTS

PG. 1 OF 1