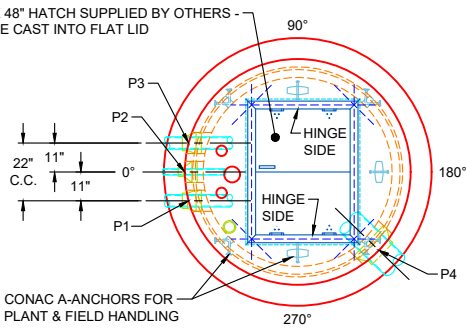
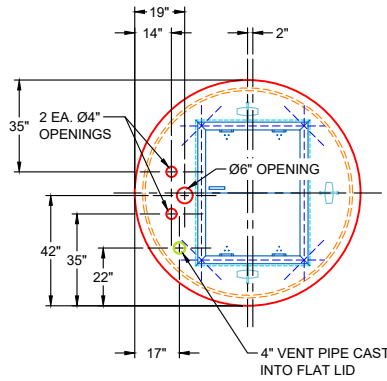


36" X 48" HATCH SUPPLIED BY OTHERS - TO BE CAST INTO FLAT LID



PLAN VIEW

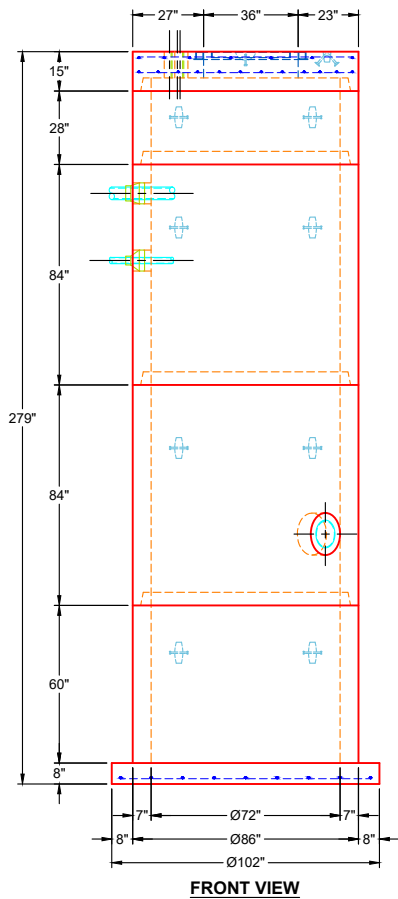


FLAT LID OPENINGS DETAIL

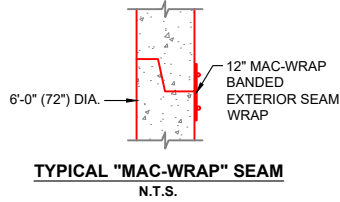
GENERAL NOTES:

1. MANUFACTURED TO ASTM C-478 (LATEST REVISION)
2. CONCRETE: 5,000 PSI AT 28 DAYS
3. REINFORCEMENT AS NOTED
 - TOP SLAB TOP MAT: #4 BAR @ 18" C.C. E.W. (GRADE 60)
 - TOP SLAB BOTTOM MAT: #4 BAR @ 9" C.C. E.W. (GRADE 60)
 - BASE & RISER: PER ASTM A615
4. WEIGHTS:
 15" FLAT LID 5,093 LBS
 28" RISER 4,082 LBS
 84" RISER 12,154 LBS
 84" RISER 12,127 LBS
 60" BASE 14,232 LBS
 TOTAL WEIGHT 47,688 LBS
5. CONTRACTOR TO VERIFY ALL DIMENSIONS BEFORE MANUFACTURE
6. 36" X 48" HATCH SUPPLIED BY OTHERS - HATCH TO BE CAST INTO TOP SLAB
7. 4" VENT PIPE SUPPLIED BY OTHERS - TO BE CAST INTO FLAT LID
8. ADJUSTMENT / SLACK: 0.2"
9. JOINT SEALANT: CONSEAL CS-231 - 1" (PRIMARY & SECONDARY ROWS)
 EXTERIOR WRAP: 12" MACWRAP
10. EXTERIOR BITUMINOUS COATING (CS-55) REQUIRED

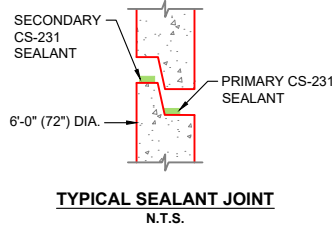
OPENINGS					
PIPE ID	ANGLE	ELEV	PIPE SIZE & TYPE	CONNECTOR	HOLE SIZE
P1	0	446.63	4" DUCTILE	PSX 8QRS-S ND	Ø8"
P2	0	444.50	2" PVC SCH 40	PSX 8QRS-S ND	Ø8"
P3	0	446.63	4" DUCTILE	PSX 8QRS-S ND	Ø8"
P4	224	435.57	10" SDR 35	PSX 16Y ND	Ø16"



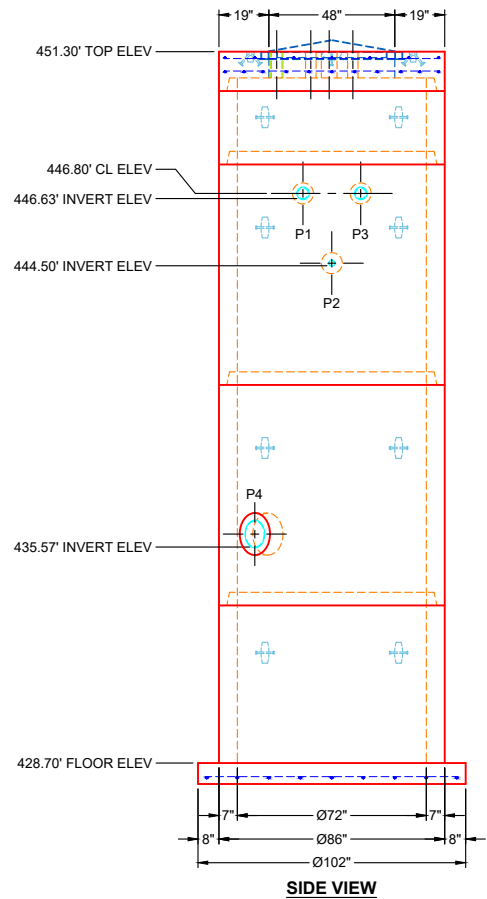
FRONT VIEW



**TYPICAL "MAC-WRAP" SEAM
N.T.S.**



**TYPICAL SEALANT JOINT
N.T.S.**



SIDE VIEW

REVISIONS

REV.	DATE:	NO REVISIONS TO DATE
0		



SUBMITTAL DRAWING: Ø72" WET WELL W/ EXT. COATING		
CUSTOMER: TRC, LLC		
PROJECT: OHIO RIVER SERVICE AREA REHAB		
STRUCTURE: CARDINAL HARBOUR WET WELL		
SALES ORDER NO: 24-4112		
CHECKED BY: B. SMITH	DRAWN BY: K. CARDWELL	
DATE: 01/20/26	SCALE: NTS	PG. 1 OF 1