

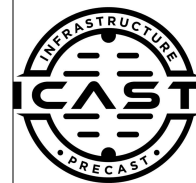
Job Name: 24-4112 - Ohio River Service Area Rehab  
 Job Location: Louisville, KY 40222  
 Contractor: TRC, LLC

Plant: Beaver Dam, KY

Tech: K. Cardwell

1/20/2026 2:17:05 PM

PC: A. Wells



**Structure ID: Cardinal Harbour Wet Well**

**P1 MH072BAEVF**

**MH BASE w/FLANGE (08F/08EF) T/n**

P6) 36" x 48" - CASTING HEIGHT - 0"	0 lb
P5) 72" - MH FLAT TOP w/36"x48" Hatch F/G - 15"	5093 lb
P4) 72" - MH RISER Custom Ht T/G - 28"	4082 lb
P3) 72" - MH RISER SPECIAL T/G - 84"	12154 lb
P2) 72" - MH RISER SPECIAL T/G - 84"	12127 lb
P1) 72" - MH BASE w/FLANGE (08F/08EF) T/n - 60"	14232 lb
4) JOINT WRAP - 12" WD x 072" MAC WRAP	0 lb
1) CS-55 EXTERIOR COATING	0 lb
1) This Structure Includes a Cast-in Item - 36" x 48" Hatch (Supplied by Others)	0 lb
1) This Structure Includes a Cast-in Item - 4in Vent Pipe (Supplied by Others)	0 lb
1) 72" - EXT. FLG (72ø MH)8"WD/8"THK	0 lb
4) 72" - Conseal CS-231 1.00" (Double)	0 lb
1) 36" x 48" - Conseal CS-231 1.00" (Double)	0 lb
3) PSX - 8QRS-S NYLO	20 lb
1) PSX - 16Y NYLO	8 lb
566.6 SqFt) CS-55 BLACK ACRYLLIC [EXT]	0 lb
<b>Structure Total:</b>	<b>47716 lb</b>

**Structure Notes:**

- PER ASTM C-478 SPECS
- CONCRETE: 5,000 PSI AT 28 DAYS
- REINFORCEMENT: PER ASTM A615
- NO STEPS
- CS-55 EXTERIOR COATING REQUIRED
- 36" X 48" HATCH & 4" VENT PIPE SUPPLIED BY OTHERS - TO BE CAST INTO FLAT LID

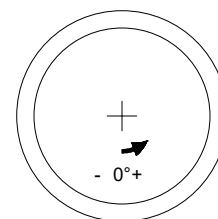
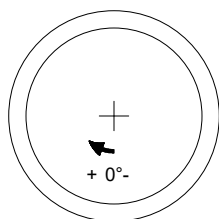
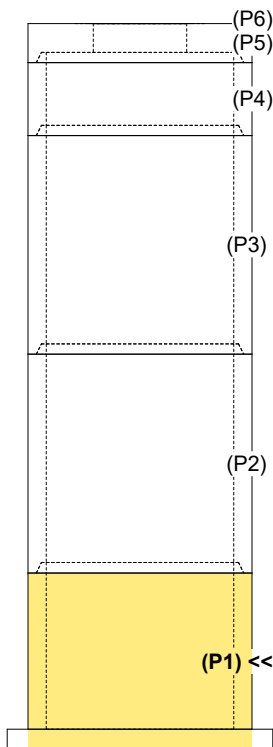
**FIRST POUR (BASE): 12,646 LBS**  
**SECOND POUR (FLANGE): 1,586 LBS**

Rim: 451.3' Rim to Invert: 15.73' Slack: 0.2" Sump: 82.44" Step Position:

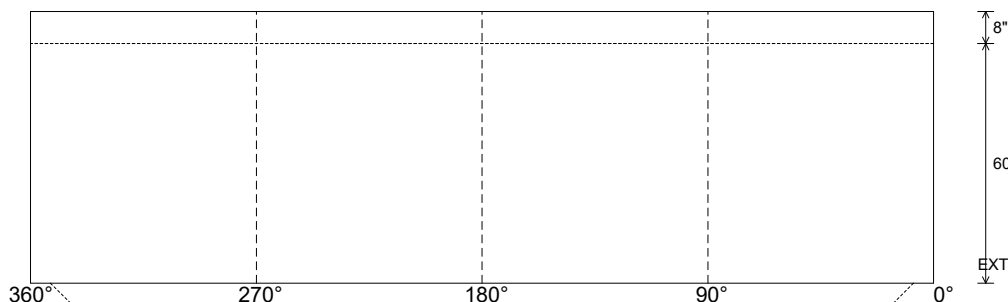
Position	Elev	Angle	Ext. (cw)	Pipe	Pipe OD	Connector	Hole	Horz Size	Up ( )	Offset
Invert 1										
Invert 2										
Invert 3										
Invert 4										
Invert 5										
Invert 6										
Invert 7										
Invert 8										

RIGHT-SIDE UP VIEW (int. dimensions)

UPSIDE-DOWN VIEW (int. dimenions)



INSIDE WALL DIMENSIONS



Coating (Int):  
 Coating (Ext): CS-55 BLACK ACRYLLIC

Seam Up: Tongue  
 Seam Dn: n/a

Wall Thickness: 7"  
 Floor Height: 8"

Height (Int): 60"  
 Height (Ext): 68"

Weight (Net): 14232 lb  
 Volume (Net): 3.64cu.yd

Job Name: 24-4112 - Ohio River Service Area Rehab  
 Job Location: Louisville, KY 40222  
 Contractor: TRC, LLC

Plant: Beaver Dam, KY  
 1/20/2026 2:17:05 PM

Tech: K. Cardwell  
 PC: A. Wells



**Structure ID: Cardinal Harbour Wet Well**

**P1 MH072BAEVF**

**MH BASE w/FLANGE (08F/08EF) T/n**

P6) 36" x 48" - CASTING HEIGHT - 0"	0 lb
P5) 72" - MH FLAT TOP w/36"x48" Hatch F/G - 15"	5093 lb
P4) 72" - MH RISER Custom Ht T/G - 28"	4082 lb
P3) 72" - MH RISER SPECIAL T/G - 84"	12154 lb
P2) 72" - MH RISER SPECIAL T/G - 84"	12127 lb
P1) 72" - MH BASE w/FLANGE (08F/08EF) T/n - 60"	14232 lb
4) JOINT WRAP - 12" WD x 072" MAC WRAP	0 lb
1) CS-55 EXTERIOR COATING	0 lb
1) This Structure Includes a Cast-in Item - 36" x 48" Hatch (Supplied by Others)	0 lb
1) This Structure Includes a Cast-in Item - 4in Vent Pipe (Supplied by Others)	0 lb
1) 72" - EXT. FLG (72ø MH)8"WD/8"THK	0 lb
4) 72" - Conseal CS-231 1.00" (Double)	0 lb
1) 36" x 48" - Conseal CS-231 1.00" (Double)	0 lb
3) PSX - 8QRS-S NYLO	20 lb
1) PSX - 16Y NYLO	8 lb
566.6 SqFt) CS-55 BLACK ACRYLLIC [EXT]	0 lb
<b>Structure Total:</b>	<b>47716 lb</b>

Structure Notes:

- PER ASTM C-478 SPECS
- CONCRETE: 5,000 PSI AT 28 DAYS
- REINFORCEMENT: DRILL & DOWEL #5 BAR @ 8" C.C. E.W. (GRADE 60) OUT OF BASE FLOOR FOR FLANGE POUR TIE-IN - MIN. 4" PENETRATION INTO FLOOR & 2" MIN. REBAR CLEARANCE (TYP)
- NO STEPS
- CS-55 EXTERIOR COATING REQUIRED
- 36" X 48" HATCH & 4" VENT PIPE SUPPLIED BY OTHERS - TO BE CAST INTO FLAT LID

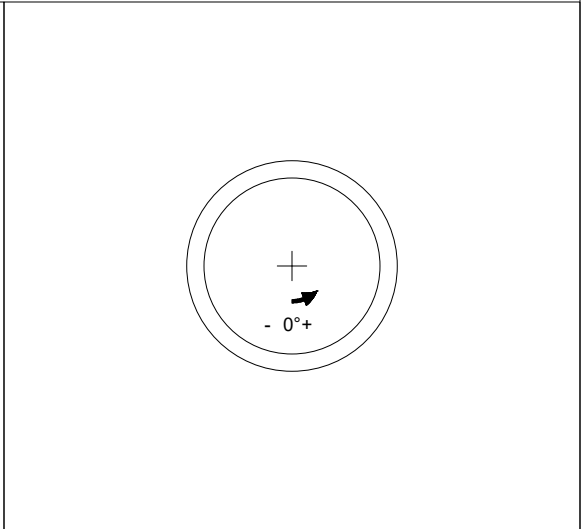
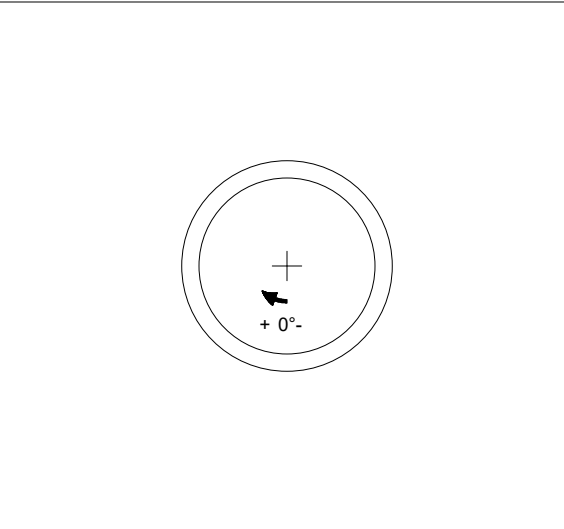
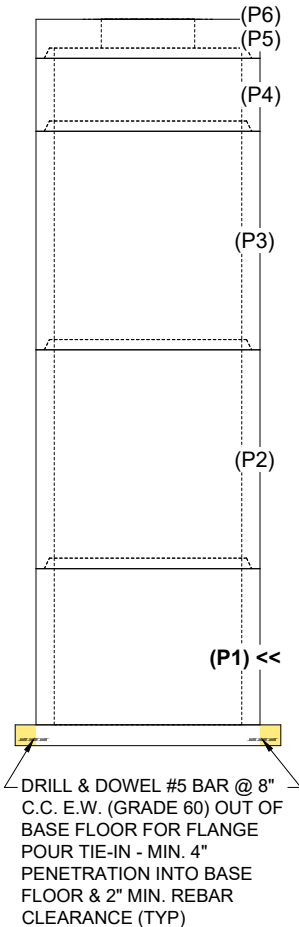
**FIRST POUR (BASE): 12,646 LBS**  
**SECOND POUR (FLANGE): 1,586 LBS**

Rim: 451.3' Rim to Invert: 15.73' Slack: 0.2' Sump: 82.44" Step Position:

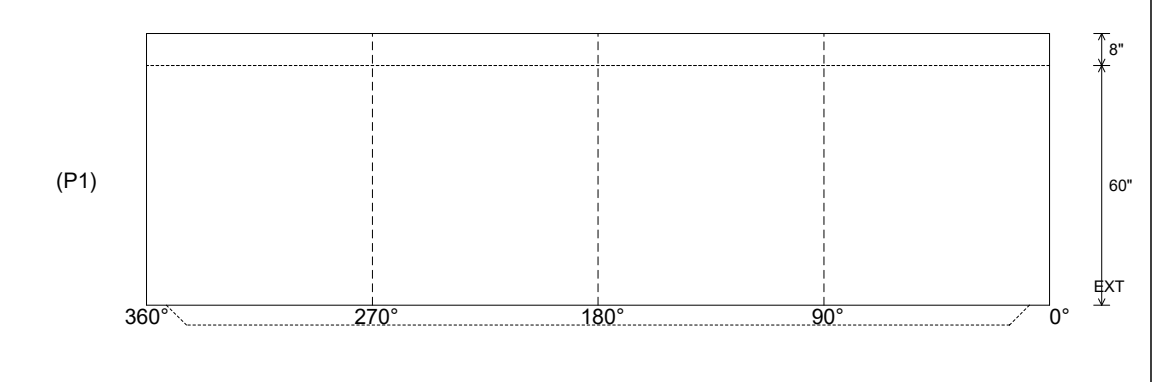
Position	Elev	Angle	Ext. (cw)	Pipe	Pipe OD	Connector	Hole	Horz Size	Up ( )	Offset
Invert 1										
Invert 2										
Invert 3										
Invert 4										
Invert 5										
Invert 6										
Invert 7										
Invert 8										

RIGHT-SIDE UP VIEW (int. dimensions)

UPSIDE-DOWN VIEW (int. dimenions)



INSIDE WALL DIMENSIONS



Coating (Int): Coating (Ext): CS-55 BLACK ACRYLLIC	Seam Up: Tongue Seam Dn: n/a	Wall Thickness: 7" Floor Height: 8"	Height (Int): 60" Height (Ext): 68"	Weight (Net): 14232 lb Volume (Net): 3.64cu.yd
---	---------------------------------	--	--	---

**Job Number:**

24-4112

**Job Name:**

Ohio River Service Area Rehab

**Structure:**

Cardinal Harbour Wet Well

**Note:**

This Structure Is To Receive An  
Exterior Bituminous Coating of CS-55  
(By iCast)