

Job Name: 24-4112 - Ohio River Service Area Rehab
 Job Location: Louisville, KY 40222
 Contractor: TRC, LLC

Plant: Beaver Dam, KY
 1/20/2026 11:25:56 AM

Tech: K. Cardwell
 PC: A. Wells



Structure ID: Cardinal Harbour Valve Vault

P1 BX072072-08BA-VH

BOX BASE 8inW, 8inF, Variable Ht F/n

- P3) 50" x 60" - HATCH (CAST FLUSH) - 3" 0 lb
- P2) 72" x 72" - BX FLAT LID 8inW w/50"x60" HATCH F/F - 8" 5163 lb
- P1) 72" x 72" - BOX BASE 8inW, 8inF, Variable Ht F/n - 65" 19026 lb
- 1) JOINT WRAP - 0.065"x12"x50' CONSEAL CS212 0 lb
- 1) JOINT WRAP PRIMER - CONSEAL CS-75 (1 gal.) 0 lb
- 1) CS-55 EXTERIOR COATING 0 lb
- 1) This Structure Includes a Cast-in Item - 50" x 60" Hatch (Supplied by Others) 0 lb
- 1) This Structure Includes a Cast-in Item - 4in Vent Pipe (Supplied by Others) 0 lb
- 1) SECONDARY POUR 0 lb
- 1) 72" x 72" - Conseal CS-102 1.00" (Double) 0 lb
- 4) PSX - 8QRS-S NYLO 26 lb
- 251.78 SqFt) CS-55 BLACK ACRYLLIC [EXT] 0 lb

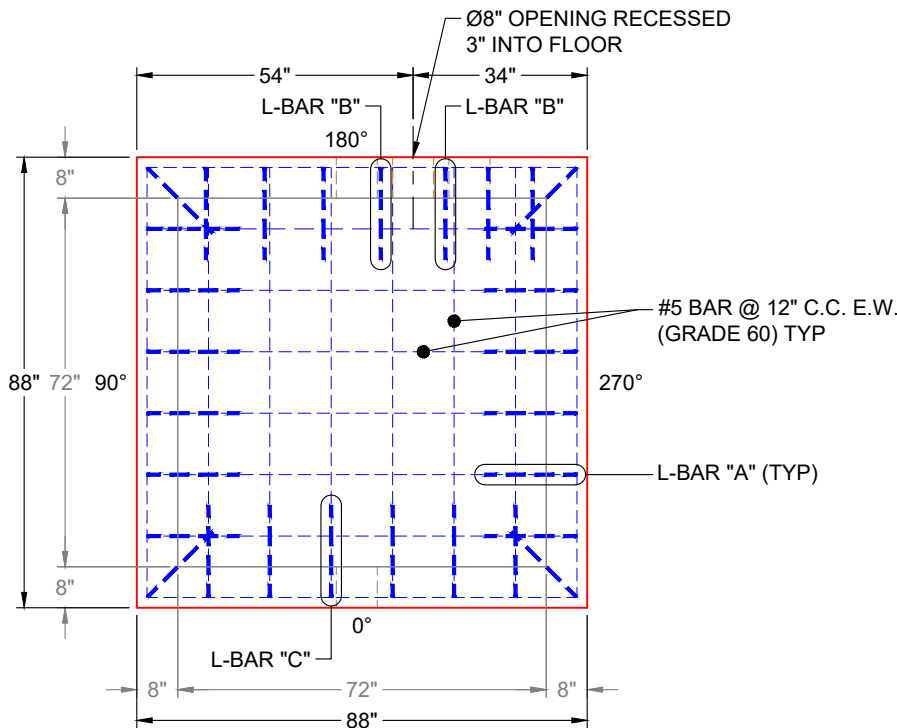
- Structure Notes:**
1. PER ASTM C-913 SPECS
 2. CONCRETE: 5,000 PSI AT 28 DAYS
 3. REINFORCEMENT: #5 BAR @ 12" C.C. E.W. (GRADE 60) - 2" MIN. REBAR CLEARANCE (TYP)
 4. NO STEPS
 5. CS-55 EXTERIOR COATING REQUIRED
 6. 48" X 60" HATCH & 4" VENT PIPE SUPPLIED BY OTHERS - TO BE CAST INTO FLAT LID
 7. ALUMINUM LADDER & SAFETY POST SUPPLIED BY OTHERS
 8. WET STICK #5 L-BARS SPACED @ 12" C.C. (GRADE 60) OUT OF FLOOR FOR WALL POUR TIE-IN (SEE L-BAR DETAILS)

FIRST POUR (FLOOR): 5,199 LBS
SECOND POUR (WALLS): 13,824 LBS

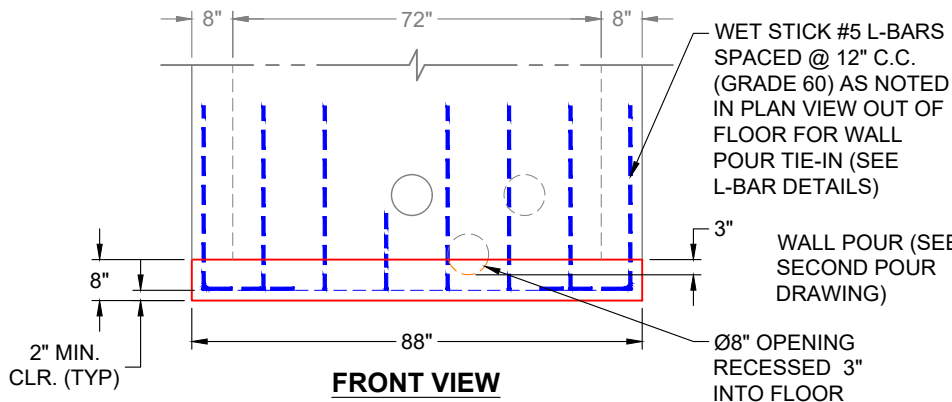
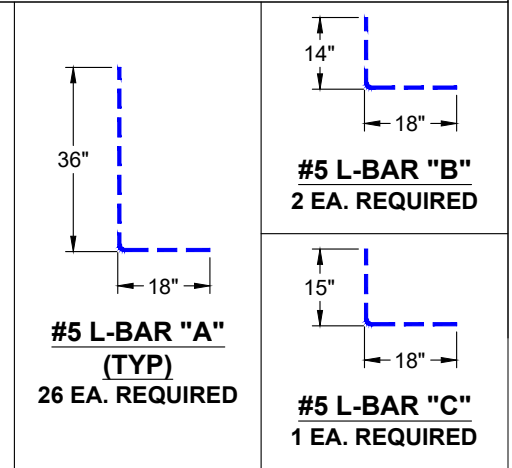
Structure Total: 24215 lb

Rim: 452' Rim to Invert: 6.1' Slack: 0.2" Sump: 0" Step Position:

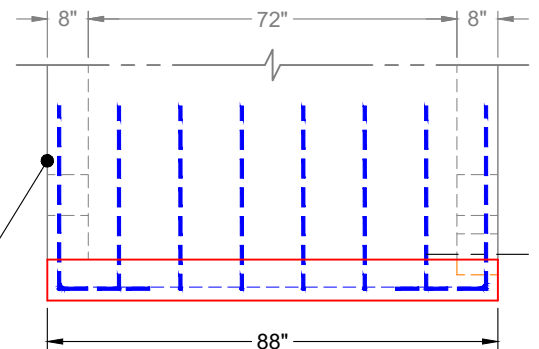
8. WET STICK #5 L-BARS SPACED @ 12" C.C. (GRADE 60) OUT OF FLOOR FOR WALL POUR TIE-IN (SEE L-BAR DETAILS)



**PLAN VIEW
(RIGHT SIDE UP)**



**FRONT VIEW
(RIGHT SIDE UP)**



**SIDE VIEW
(RIGHT SIDE UP)**

Coating (Int): Coating (Ext): CS-55 BLACK ACRYLLIC	Seam Up: Flat Seam Dn: n/a	Wall Thickness: 8" Floor Height: 8"	Height (Int): 65" Height (Ext): 73"
		Weight (Net): 19026 lb Volume (Net): 4.86cu.yd	

Job Name: 24-4112 - Ohio River Service Area Rehab
 Job Location: Louisville, KY 40222
 Contractor: TRC, LLC

Plant: Beaver Dam, KY
 1/20/2026 11:25:56 AM

Tech: K. Cardwell
 PC: A. Wells



Structure ID: Cardinal Harbour Valve Vault

P1 BX072072-08BA-VH

BOX BASE 8inW, 8inF, Variable Ht F/n

- P3) 50" x 60" - HATCH (CAST FLUSH) - 3" 0 lb
- P2) 72" x 72" - BX FLAT LID 8inW w/50"x60" HATCH F/F - 8" 5163 lb
- P1) 72" x 72" - BOX BASE 8inW, 8inF, Variable Ht F/n - 65" 19026 lb
- 1) JOINT WRAP - 0.065"x12"x50' CONSEAL CS212 0 lb
- 1) JOINT WRAP PRIMER - CONSEAL CS-75 (1 gal.) 0 lb
- 1) CS-55 EXTERIOR COATING 0 lb
- 1) This Structure Includes a Cast-in Item - 50" x 60" Hatch (Supplied by Others) 0 lb
- 1) This Structure Includes a Cast-in Item - 4in Vent Pipe (Supplied by Others) 0 lb
- 1) SECONDARY POUR 0 lb
- 1) 72" x 72" - Conseal CS-102 1.00" (Double) 0 lb
- 4) PSX - 8QRS-S NYLO 26 lb
- 251.78 SqFt) CS-55 BLACK ACRYLLIC [EXT] 0 lb

- Structure Notes:**
1. PER ASTM C-913 SPECS
 2. CONCRETE: 5,000 PSI AT 28 DAYS
 3. REINFORCEMENT: #5 BAR @ 12" C.C. E.W. (GRADE 60) - 2" MIN. REBAR CLEARANCE (TYP)
 4. NO STEPS
 5. CS-55 EXTERIOR COATING REQUIRED
 6. 48" X 60" HATCH & 4" VENT PIPE SUPPLIED BY OTHERS - TO BE CAST INTO FLAT LID
 7. ALUMINUM LADDER & SAFETY POST SUPPLIED BY OTHERS
 8. LIFTERS: 4 EA. 6CA14 CONAC A-ANCHORS FOR PLANT & FIELD HANDLING - INSTALLED IN 90° & 270° WALLS, 16" FROM TOP OF WALLS

Structure Total: 24215 lb

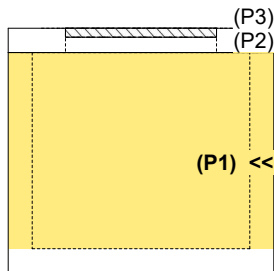
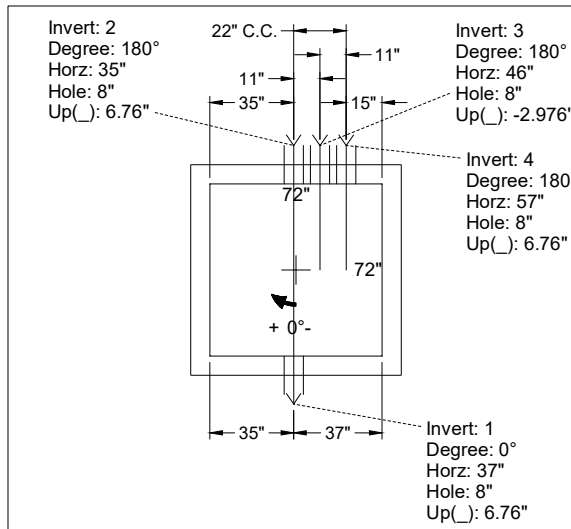
FIRST POUR (FLOOR): 5,199 LBS
SECOND POUR (WALLS): 13,824 LBS

Rim: 452' Rim to Invert: 6.1' Slack: 0.2" Sump: 0" Step Position:

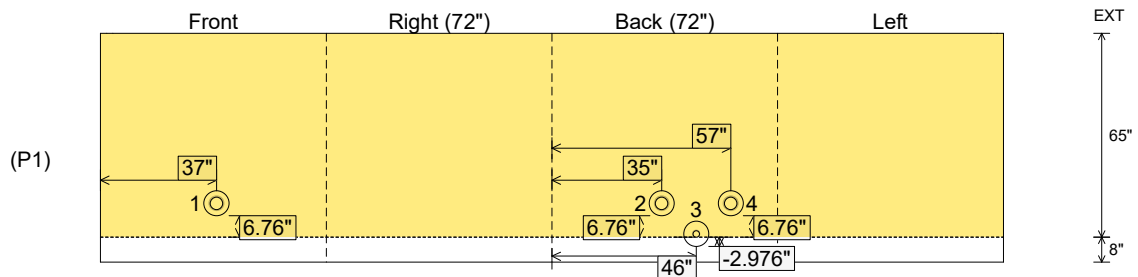
Position	Elev	Angle	Ext. (cw)	Pipe	Pipe OD	Connector	Hole	Horz Size	Up ()	Offset
Invert 1	446.63'	0°	45"	4" DI	4.75"	PSX 8QRS-S NYLO	8"	8"	6.76"	1"
Invert 2	446.63'	180°	43"	4" DI	4.75"	PSX 8QRS-S NYLO	8"	8"	6.76"	-1"
Invert 3	445.9'	180°	54"	2" PVC SCH40	2.375"	PSX 8QRS-S NYLO	8"	8"	-2.976"	10"
Invert 4	446.63'	180°	65"	4" DI	4.75"	PSX 8QRS-S NYLO	8"	8"	6.76"	21"
Invert 5										
Invert 6										
Invert 7										
Invert 8										

RIGHT-SIDE UP VIEW (int. dimensions)

UPSIDE-DOWN VIEW (int. dimensions)



INSIDE WALL DIMENSIONS



Coating (Int): Coating (Ext): CS-55 BLACK ACRYLLIC	Seam Up: Flat Seam Dn: n/a	Wall Thickness: 8" Floor Height: 8"	Height (Int): 65" Height (Ext): 73"	Weight (Net): 19026 lb Volume (Net): 4.86cu.yd
---	-------------------------------	--	--	---

Job Number:

24-4112

Job Name:

Ohio River Service Area Rehab

Structure:

Cardinal Harbour Valve Vault

Note:

This Structure Is To Receive An
Exterior Bituminous Coating of CS-55
(By iCast)