

Job Name: 24-4078 - Christian Co. Athletic Field Improvements
 Job Location: Hopkinsville, KY 42240
 Contractor: Herring Construction, Inc.

Plant: Beaver Dam, KY

Tech: K. Cardwell

11/3/2025 1:59:29 PM

PC: J. Jarvis



Structure ID: DI-B

P1 BX2424-08BAVF

BOX BASE 8inW, 8inF, Variable Ht F/n

- P3) 24" x 24" - CASTING (Cast-In) - 4"
- P2) 24" x 24" - CB FLAT TOP 8"W w/24"x24" F/G F/F - 8"
- P1) 24" x 24" - BOX BASE 8inW, 8inF, Variable Ht F/n - 20"
- 1) CASTING - HOE 280T F/G (Cast-In)
- 2) 24" x 24" - Conseal CS-102 1.00"
- 1) Hole - 16

0 lb
 885 lb
 2658 lb
 182 lb
 0 lb
 0 lb

 3725 lb

Structure Total: 3725 lb

Structure Notes:

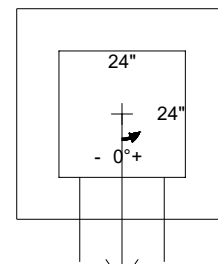
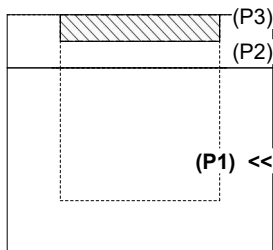
1. PER ASTM C-913 SPECS
2. CONCRETE: 4,000 PSI AT 28 DAYS
3. REINFORCEMENT: #5 BAR @ 12" C.C. E.W. (GRADE 60) - 2" MIN. REBAR CLEARANCE (TYP)
4. HOE 280T FRAME & GRATE SUPPLIED BY ICAST
5. CASTING FRAME TO BE CAST INTO FLAT LID FLANGE SIDE UP

Rim: 537.6' Rim to Invert: 2.35' Slack: 0.2" Sump: 0" Step Position:

Position	Elev	Angle	Ext. (cw)	Pipe	Pipe OD	Connector	Hole	Horz Size	Up ()	Offset
Invert 1	535.25'	0°	20"	12" HDPE	14.5"	Hole 16	16"	16"	-1.25"	0"
Invert 2										
Invert 3										
Invert 4										
Invert 5										
Invert 6										
Invert 7										
Invert 8										

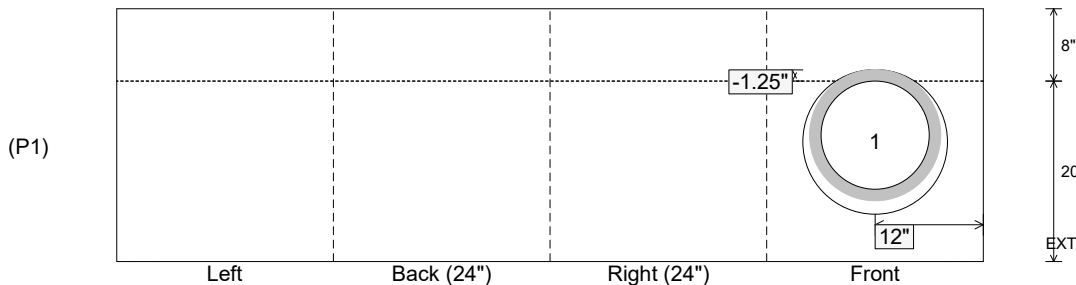
RIGHT-SIDE UP VIEW (int. dimensions)

UPSIDE-DOWN VIEW (int. dimensions)



Invert: 1
 Degree: 0°
 Horz: 12"
 Hole: 16"
 Up(): -1.25"

INSIDE WALL DIMENSIONS



Coating (Int):
 Coating (Ext):

Seam Up: Flat
 Seam Dn: n/a

Wall Thickness: 8"
 Floor Height: 8"

Height (Int): 20"
 Height (Ext): 28"

Weight (Net): 2658 lb
 Volume (Net): 0.68cu.yd