

Job Name: 24-3539 - Larkin Springs Townhomes  
 Job Location: Nashville, TN  
 Contractor: Apex Earthworks, LLC

Plant: 100  
 2/25/2026 10:09:06 AM

Tech: J. Horsley - F  
 PC: A. Chambers



**Structure ID: D6**

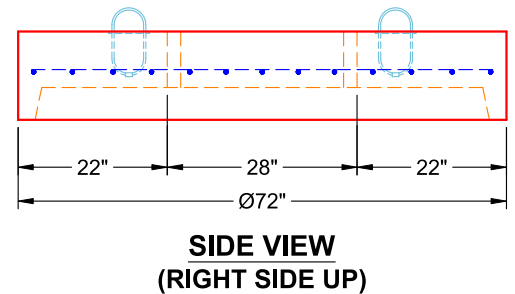
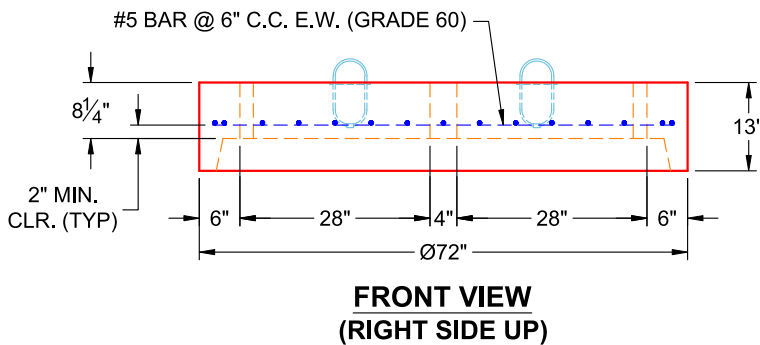
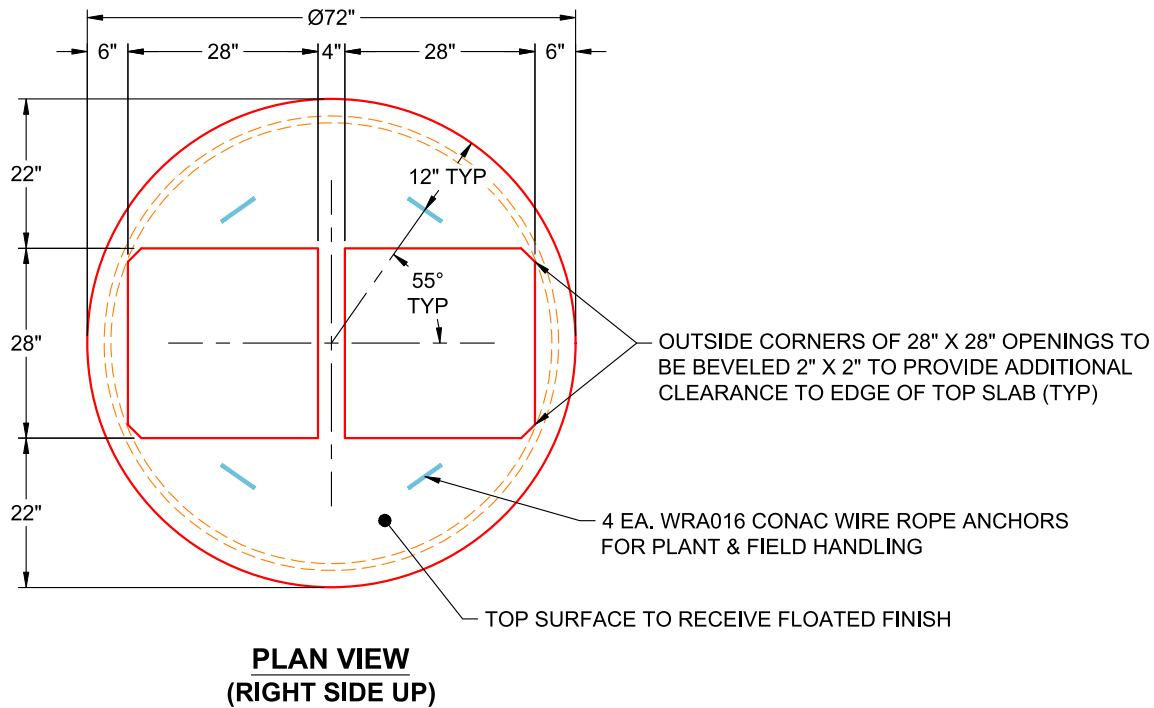
**P2 MH060LD13SP**

**MH FLAT TOP w/(2) 28"x28" Holes F/G**

- P3) 28" x 28" - CASTING HEIGHT - 7.50"
- P2) 60" - MH FLAT TOP w/(2) 28"x28" Holes F/G - 13"
- P1) 60" - MH BASE Custom Ht T/n - 67"
- 1) CASTING - JBS 3300 F/G/H - Double Curb Inlet
- 1) 60" - Conseal CS-102 1.00"
- 1) 28" x 28" - Conseal CS-102 1.00"
- 2) Hole - 26
- 5) MH Step ML-10-TDS-NCR - 10"

0 lb  
 1993 lb  
 9178 lb  
 500 lb  
 0 lb  
 0 lb  
 0 lb  
 0 lb  
 -----  
 Structure Total: 11671 lb

- Structure Notes:
1. PER ASTM C-478 SPECIFICATIONS
  2. CONCRETE: 4,000 PSI AT 28 DAYS
  3. REINFORCEMENT: #5 BAR @ 6" C.C. E.W. (GRADE 60) - 2" MIN. REBAR CLEARANCE (TYP)
  4. 2 EA. JBS 3300 FRAMES, GRATES, & CURB HOODS SUPPLIED BY ICAST
  5. LIFTERS: 4 EA. WRA016 CONAC WIRE ROPE ANCHORS FOR PLANT & FIELD HANDLING
  6. TOP SURFACE TO RECEIVE FLOATED FINISH



Coating (Int):  
 Coating (Ext):

Seam Up: Flat  
 Seam Dn: Groove

Wall Thickness: 6"

Height (Ext): 13"

Weight (Net): 1993 lb  
 Volume (Net): 0.57cu.yd