

Job Name: 24-3539 - Larkin Springs Townhomes  
 Job Location: Nashville, TN  
 Contractor: Apex Earthworks, LLC

Plant: 100  
 2/25/2026 10:08:09 AM

Tech: J. Horsley - F  
 PC: A. Chambers



**Structure ID: D3A**

**P2 BX2828-06WTVH**

**BX MONOTOP 6"W/6"T w/Solid Top F/G**

- P2) 28" x 28" - BX MONOTOP 6"W/6"T w/Solid Top F/G - 42"
- P1) 28" x 28" - BOX BASE 6inW, 6inF, Variable Ht T/n - 35"
- 1) 28" x 28" - Conseal CS-102 1.00"
- 3) Hole - 26
- 4) Weir n/n - 24"x6"

3391 lb  
 2400 lb  
 0 lb  
 0 lb  
 0 lb  
 Structure Total: 5792 lb

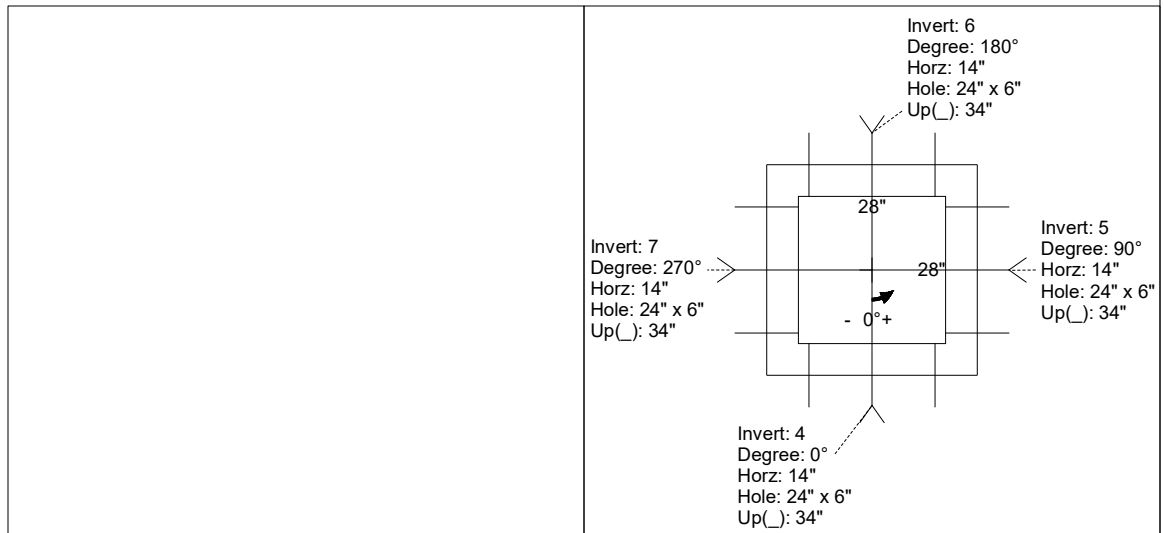
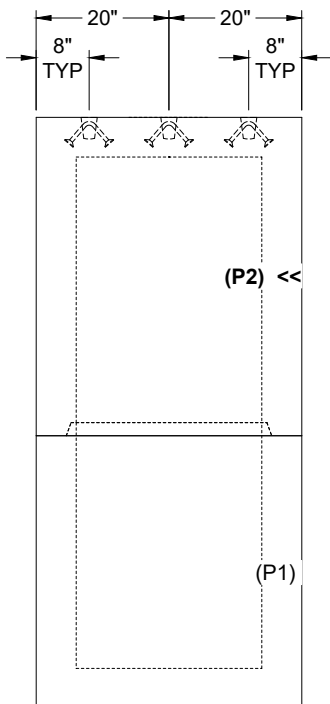
- Structure Notes:**
1. PER ASTM C-913 SPECIFICATIONS
  2. CONCRETE: 4,000 PSI AT 28 DAYS
  3. REINFORCEMENT: #5 BAR @ 12" C.C. E.W. (GRADE 60) - 2" MIN. REBAR CLEARANCE (TYP)
  4. NO STORM INVERT
  5. NO STEPS
  6. NO CASTING - SOLID TOP
  7. LIFTERS: 3 EA. 5CA14 CONAC A-ANCHORS FOR PLANT & FIELD HANDLING - INSTALLED MIN. 8" FROM EDGE
  8. TOP SURFACE TO RECEIVE LIGHT BRUSH FINISH

Rim: 530.9' Rim to Invert: 6.92' Slack: 0.04' Sump: 0' Step Position:

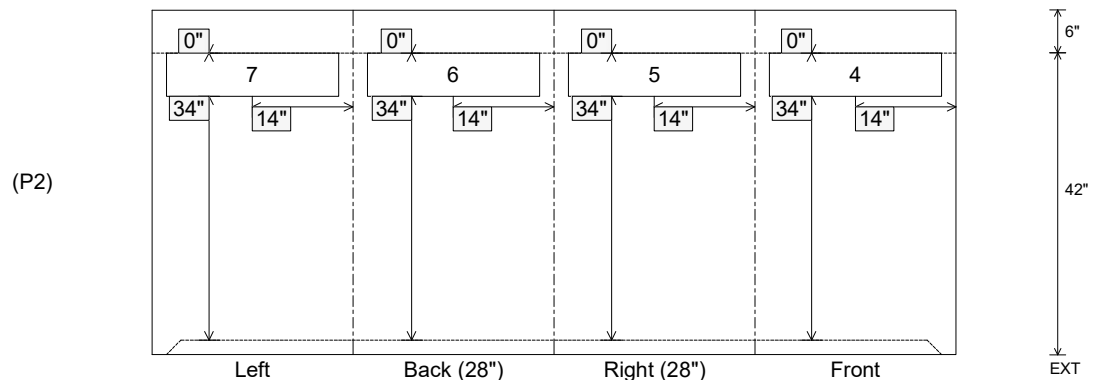
| Position | Elev   | Angle | Ext. (cw) | Pipe          | Pipe OD  | Connector   | Hole     | Horz Size | Up ( ) | Offset |
|----------|--------|-------|-----------|---------------|----------|-------------|----------|-----------|--------|--------|
| Invert 1 |        |       |           |               |          |             |          |           |        |        |
| Invert 2 |        |       |           |               |          |             |          |           |        |        |
| Invert 3 |        |       |           |               |          |             |          |           |        |        |
| Invert 4 | 529.9' | 0°    | 20"       | 24" x 6" Weir | 24" x 6" | Weir 24"x6" | 24" x 6" | 24"       | 34"    | 0"     |
| Invert 5 | 529.9' | 90°   | 20"       | 24" x 6" Weir | 24" x 6" | Weir 24"x6" | 24" x 6" | 24"       | 34"    | 0"     |
| Invert 6 | 529.9' | 180°  | 20"       | 24" x 6" Weir | 24" x 6" | Weir 24"x6" | 24" x 6" | 24"       | 34"    | 0"     |
| Invert 7 | 529.9' | 270°  | 20"       | 24" x 6" Weir | 24" x 6" | Weir 24"x6" | 24" x 6" | 24"       | 34"    | 0"     |
| Invert 8 |        |       |           |               |          |             |          |           |        |        |

RIGHT-SIDE UP VIEW (int. dimensions)

UPSIDE-DOWN VIEW (int. dimensions)



INSIDE WALL DIMENSIONS



Coating (Int):  
 Coating (Ext):

Seam Up: Groove  
 Seam Dn: n/a

Wall Thickness: 6"  
 Floor Height: 6"

Height (Int): 35"  
 Height (Ext): 41"

Weight (Net): 2400 lb  
 Volume (Net): 0.61cu.yd