

Job Name: 24-3539 - Larkin Springs Townhomes  
 Job Location: Nashville, TN  
 Contractor: Apex Earthworks, LLC

Plant: 100  
 2/25/2026 10:08:40 AM

Tech: J. Horsley - F  
 PC: A. Chambers



**Structure ID: D3**

**P2 BX2864-06R24**

**BOX RISER 6inW F/G**

- P3) 28" x 64" - CASTING HEIGHT - 7.50"
- P2) 28" x 64" - BOX RISER 6inW F/G - 24"
- P1) 28" x 64" - BOX BASE 6inW, 6inF, Variable Ht T/n - 44"
- 1) CASTING - JBS 3300 F/G/H - Double Curb Inlet
- 2) 28" x 64" - Conseal CS-102 1.00"
- 3) Hole - 26
- 2) LINTEL BAR SLOT n/n - 7"x1"

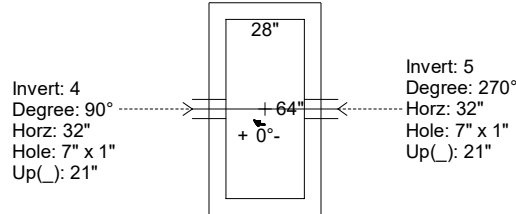
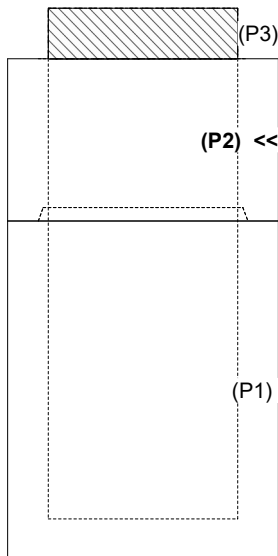
0 lb  
 2506 lb  
 5336 lb  
 500 lb  
 0 lb  
 0 lb  
 0 lb  
 -----  
 Structure Total: 8343 lb

- Structure Notes:**
1. PER ASTM C-913 SPECIFICATIONS
  2. CONCRETE: 4,000 PSI AT 28 DAYS
  3. REINFORCEMENT: #5 BAR @ 12" C.C. E.W. (GRADE 60) - 2" MIN. REBAR CLEARANCE (TYP)
  4. NO STEPS
  5. 2 EA. JBS 3300 FRAMES, GRATES, & CURB HOODS SUPPLIED BY ICAST
  6. LINTEL BAR SLOTS CENTERED IN EACH LONG WALL REQUIRED (7" LONG X 1" DEEP X FULL WIDTH OF WALL)

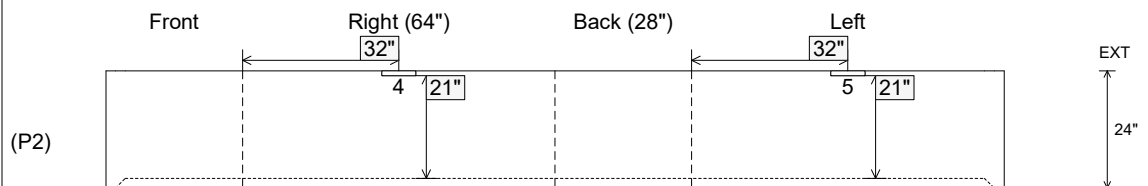
Rim: 529.9' Rim to Invert: 6.18' Slack: 1.16' Sump: 2.5' Step Position:

| Position | Elev     | Angle | Ext. (cw) | Pipe                    | Pipe OD | Connector             | Hole    | Horz Size | Up ( ) | Offset |
|----------|----------|-------|-----------|-------------------------|---------|-----------------------|---------|-----------|--------|--------|
| Invert 1 |          |       |           |                         |         |                       |         |           |        |        |
| Invert 2 |          |       |           |                         |         |                       |         |           |        |        |
| Invert 3 |          |       |           |                         |         |                       |         |           |        |        |
| Invert 4 | 529.095' | 90°   | 38"       | 7" x 1" LINTEL BAR SLOT | 7" x 1" | LINTEL BAR SLOT 7"x1" | 7" x 1" | 7"        | 21"    | 0"     |
| Invert 5 | 529.095' | 270°  | 38"       | 7" x 1" LINTEL BAR SLOT | 7" x 1" | LINTEL BAR SLOT 7"x1" | 7" x 1" | 7"        | 21"    | 0"     |
| Invert 6 |          |       |           |                         |         |                       |         |           |        |        |
| Invert 7 |          |       |           |                         |         |                       |         |           |        |        |
| Invert 8 |          |       |           |                         |         |                       |         |           |        |        |

**RIGHT-SIDE UP VIEW (int. dimensions)**



**INSIDE WALL DIMENSIONS**



Coating (Int):  
 Coating (Ext):

Seam Up: Flat  
 Seam Dn: Groove

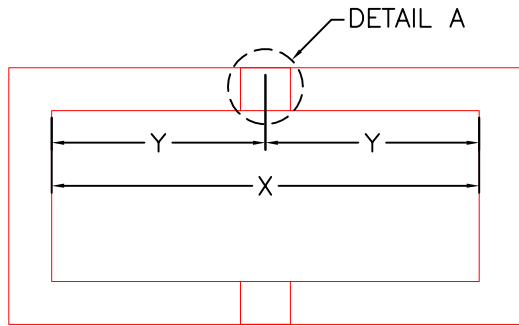
Wall Thickness: 6"  
 Floor Height: 0"

Height (Int): 24"  
 Height (Ext): 24"

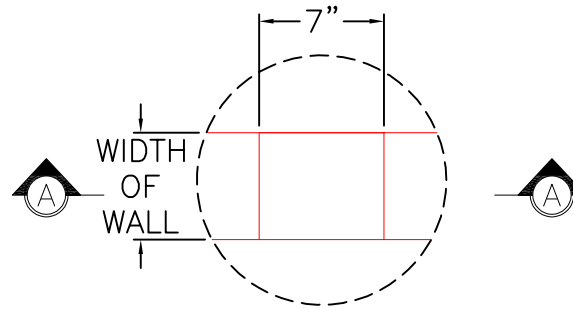
Weight (Net): 2506 lb  
 Volume (Net): 0.64cu.yd

**GENERAL NOTES:**

- RECESSES FOR LINTEL BARS TO BE 7" LONG X 1" DEEP X FULL WIDTH OF WALL.

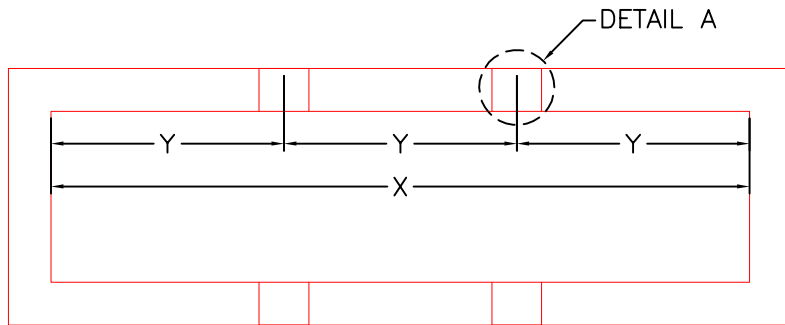


PLAN VIEW  
DOUBLE INLET

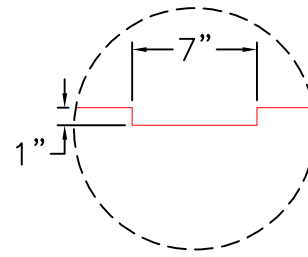


DETAIL A

| X   | Y   |
|-----|-----|
| 54" | 27" |
| 56" | 28" |
| 60" | 30" |
| 64" | 32" |
| 72" | 36" |



PLAN VIEW  
TRIPLE INLET



SECTION A-A

| X    | Y                                |
|------|----------------------------------|
| 96"  | 32"                              |
| 98"  | 32 <sup>3</sup> / <sub>4</sub> " |
| 108" | 36"                              |

**PRODUCTION WORK ORDER**

PRODUCT I.D.: -

DESCRIPTION: LINTEL BAR POCKET LOCATIONS



QUALITY CONTROL CHECKLIST

- ALL DIMENSIONS CORRECT.
- LIFTERS INSTALLED.
- OPENING CENTERED.
- REINFORCING CORRECT.
- SURFACE QUALITY ACCEPTABLE.
- EDGES CHAMFERED.
- ALL PATCHWORK ACCEPTABLE.

PRODUCT VIEW: RIGHT SIDE UP

CUSTOMER: N/A

PLANT: BEAVER DAM, KY.

PROJECT: N/A

WEIGHT: N/A.

STRUCTURE: N/A

TOP SECTION JOINT: N/A

ORDER NO: N/A

BASE SECTION JOINT: N/A

PE: J.H. ROSS

DRAWING: J. COPPAGE

QC CHECK INITIALS:

DATE: 3/6/24

SCALE: NTS

PG. 1 of 1