

Job Name: 24-3539 - Larkin Springs Townhomes
 Job Location: Nashville, TN
 Contractor: Apex Earthworks, LLC

Plant: 100
 2/25/2026 10:09:08 AM

Tech: J. Horsley - F
 PC: A. Chambers



Structure ID: D13

P2 BX024024-06LD06S

BX FLAT LID 6inW SOLID F/F

- P2) 24" x 24" - BX FLAT LID 6inW SOLID F/F - 6"
- P1) 24" x 24" - BOX BASE 6inW, 6inF, Variable Ht F/n - 36"
- 1) 24" x 24" - Conseal CS-102 1.00"
- 1) Hole - 24
- 4) Weir n/n - 24"x6"

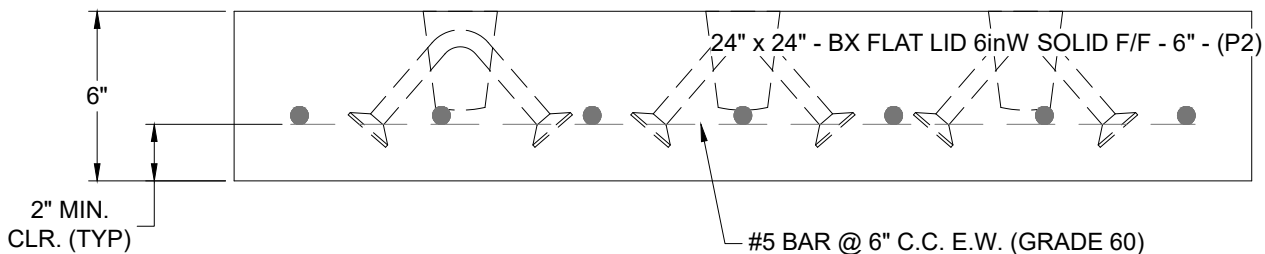
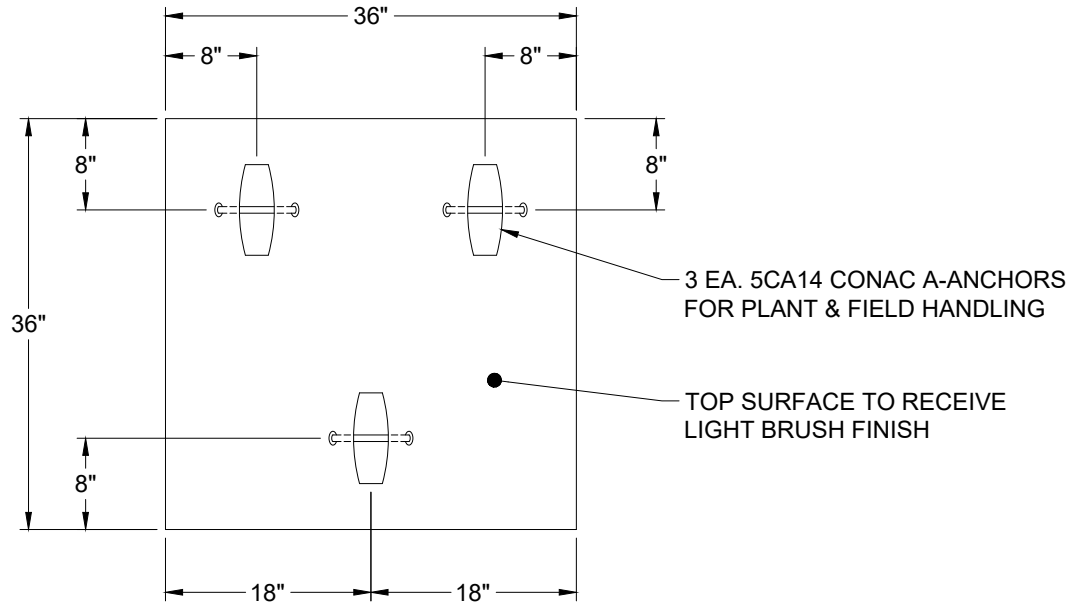
652 lb
 2355 lb
 0 lb
 0 lb
 0 lb

 3007 lb

Structure Total: 3007 lb

Structure Notes:

1. PER ASTM C-913 SPECIFICATIONS
2. CONCRETE: 4,000 PSI AT 28 DAYS
3. REINFORCEMENT: #5 BAR @ 12" C.C. E.W. (GRADE 60) - 2" MIN. REBAR CLEARANCE (TYP)
4. NO CASTING - SOLID TOP
5. LIFTERS: 3 EA. 5CA14 CONAC A-ANCHORS FOR PLANT & FIELD HANDLING
6. TOP SURFACE TO RECEIVE LIGHT BRUSH FINISH



Coating (Int):
 Coating (Ext):

Seam Up: Flat
 Seam Dn: Flat

Wall Thickness: 6"

Height (Ext): 6"

Weight (Net): 652 lb
 Volume (Net): 0.17cu.yd