

Structure ID: JB5

P1 MH060BA60

MH BASE T/n

P4) 24" - CASTING HEIGHT - 7" P3) 24" - GRADE RING F/F - 4" P2) 60" - MH FLAT TOP w/ 24" ECC Hole F/G - 13" P1) 60" - MH BASE T/n - 60" 1) CASTING - JBS 1150 F/C STORM 1) 60" - Conseal CS-102 1.00" 2) Hole - 40 5) MH Step ML-10-TDS-NCR - 10"	0 lb 270 lb 2869 lb 7633 lb 250 lb 0 lb 0 lb 0 lb ----- Structure Total: 11022 lb
--	--

Structure Notes:

1. PER ASTM C478 SPECIFICATIONS.
2. CONCRETE = 4,500 PSI AT 28 DAYS.
3. NO INVERT CHANNEL.
4. CASTING BY ICAST (JBS 1150 F/C)

REINFORCING PER ASTM A615 (GRADE 60).

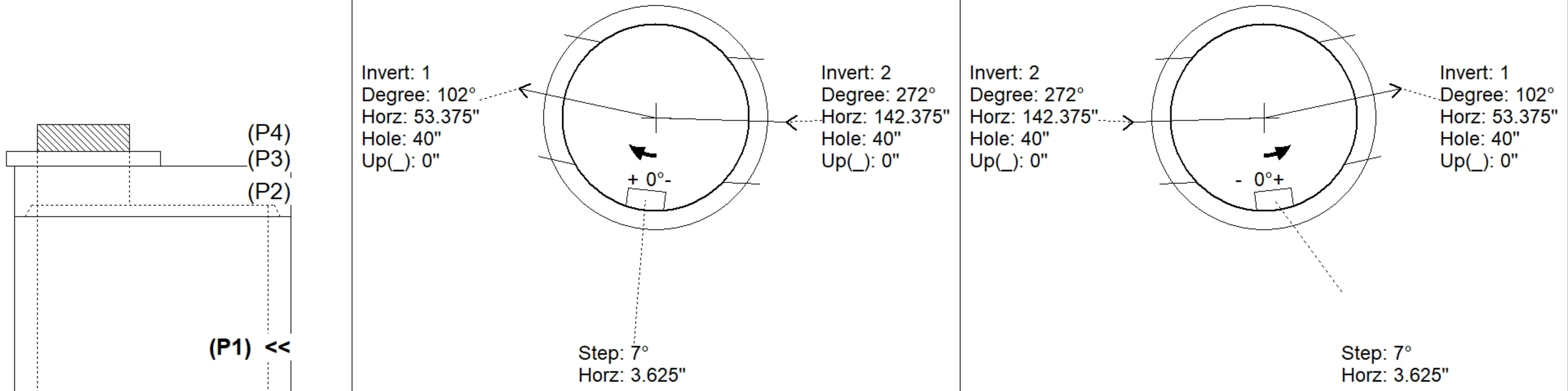
- TOP SLAB H2O LOADING..
- RISER/WALLS (As .12)
- FLOOR (As .31) #5 BARS AT 12" C.C.E.W.

Rim: 572.62' Rim to Invert: 6.76' Slack: 0.624" Sump: 3.504" Step Position: 7°

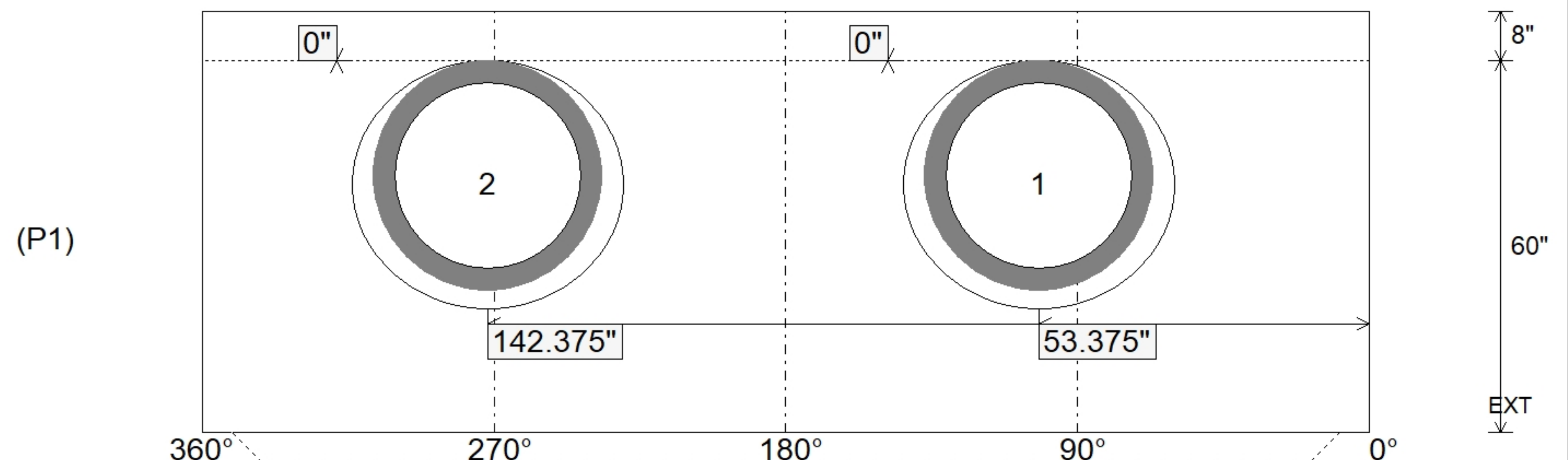
Position	Elev	Angle	Ext. (cw)	Pipe	Pipe OD	Connector	Hole	Horz Size	Up ()	Offset
Invert 1	565.86'	102°	64.125"	30" RCP B WALL	37"	Hole 40	40"	43.784"	0"	0"
Invert 2	565.86'	272°	170.875"	30" RCP B WALL	37"	Hole 40	40"	43.784"	0"	0"
Invert 3										
Invert 4										
Invert 5										
Invert 6										
Invert 7										
Invert 8										

RIGHT-SIDE UP VIEW (int. dimensions)

UPSIDE-DOWN VIEW (int. dimensions)



INSIDE WALL DIMENSIONS



Coating (Int):	Seam Up: Tongue	Wall Thickness: 6"	Height (Int): 60"	Weight (Net): 7633 lb
Coating (Ext):	Seam Dn: n/a	Floor Height: 8"	Height (Ext): 68"	Volume (Net): 1.95cu.yd