

**Structure ID: CB7**

**P1 BX28640606-VH**

**BOX BASE 6inW, 6inF, Variable Ht F/n**

P2) 28" x 64" - CASTING HEIGHT - 6" P1) 28" x 64" - BOX BASE 6inW, 6inF, Variable Ht F/n - 25" 1) CASTING - JBS 3101 Double Set (F/G/H) 1) 28" x 64" - Conseal CS-102 1.00" 1) Hole - 22 2) LINTEL BAR SLOT n/n - 7"x1"	0 lb 3950 lb 1238 lb 0 lb 0 lb 0 lb ----- Structure Total: 5188 lb
--	---

**Structure Notes:**

1. PER ASTM C913 SPECIFICATIONS.
2. CONCRETE = 4,000 PSI AT 28 DAYS.
3. NO INVERT CHANNEL.
4. CASTING BY ICAST (2ea. JBS-3101 F/G/H).

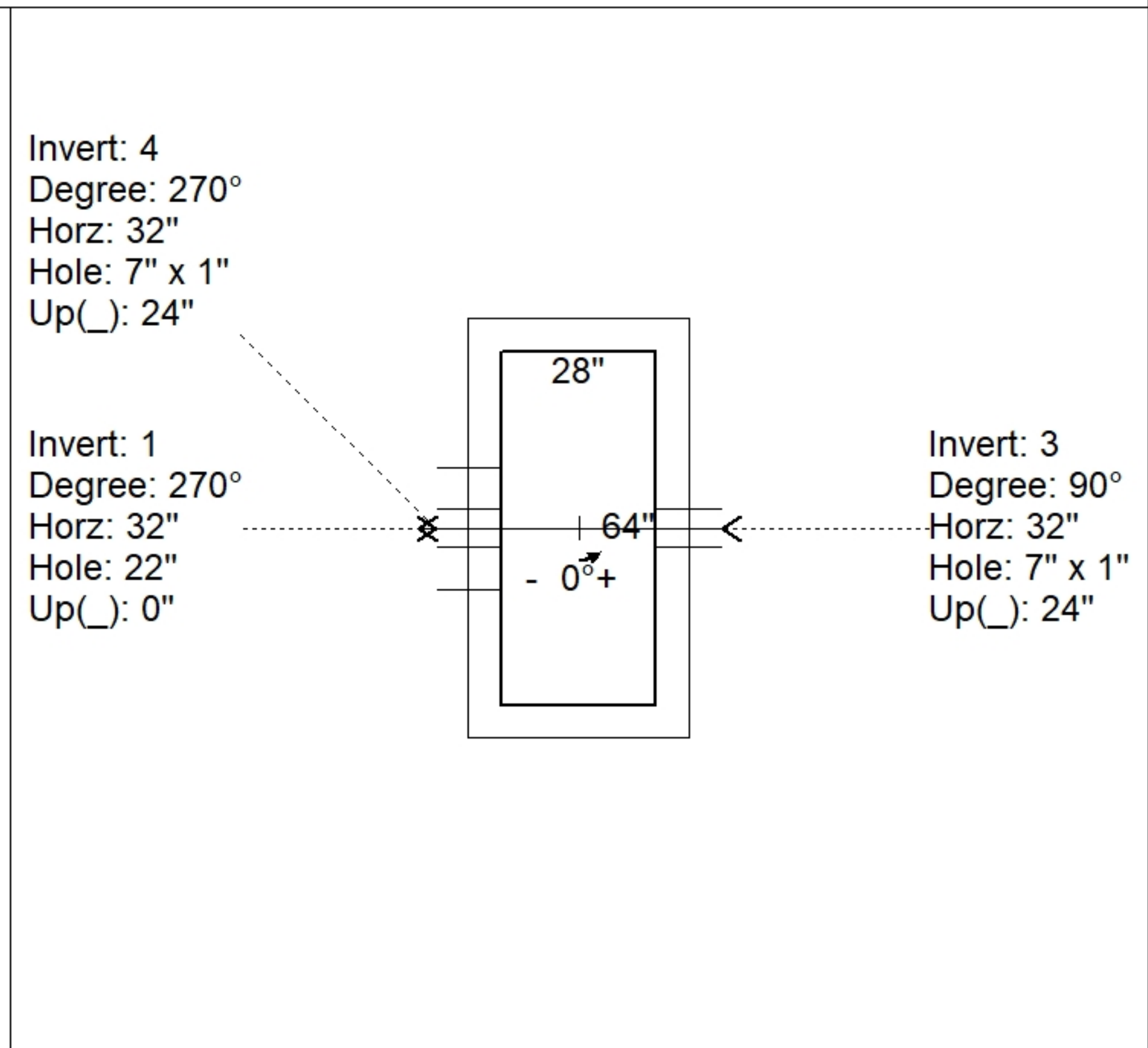
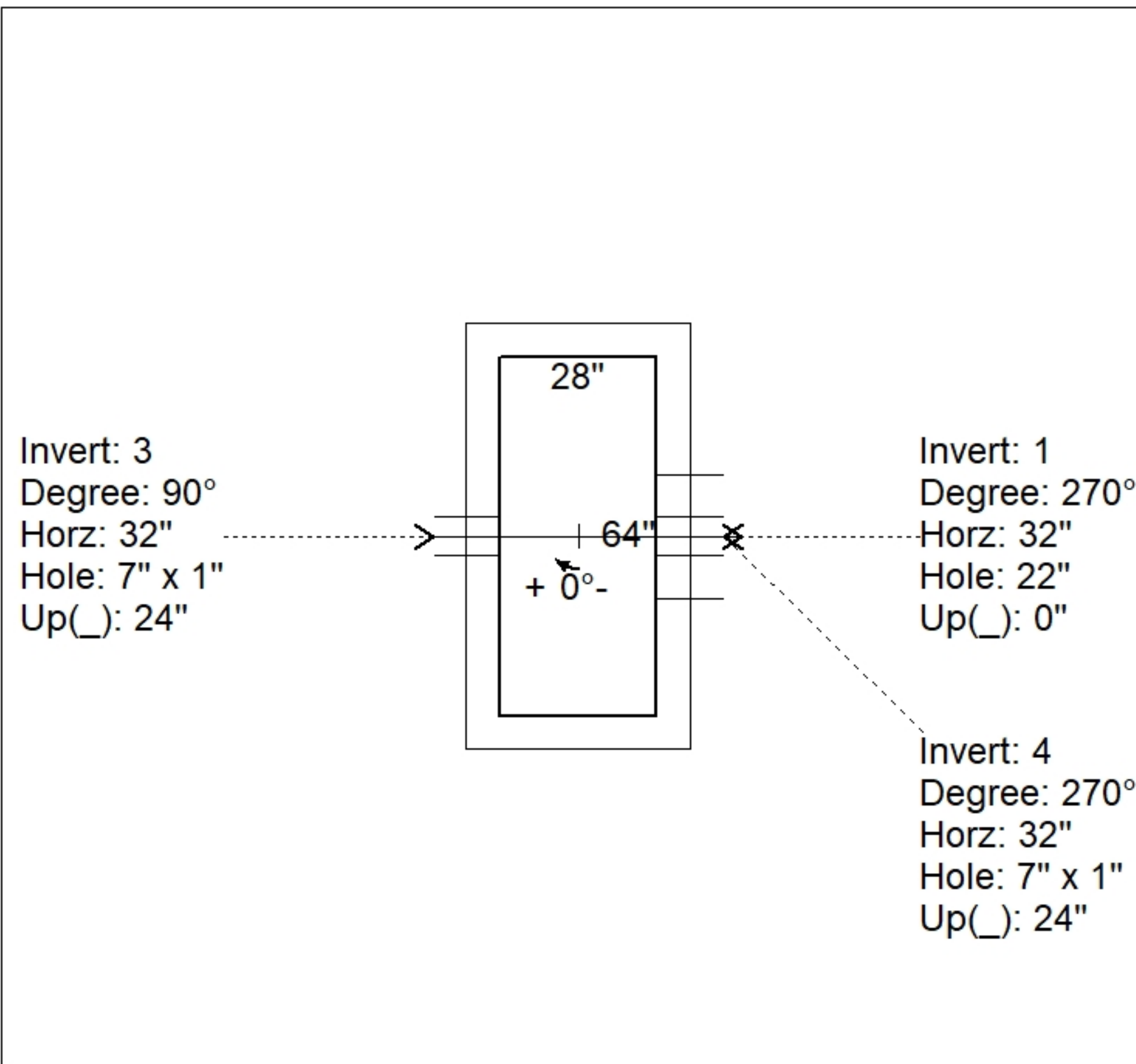
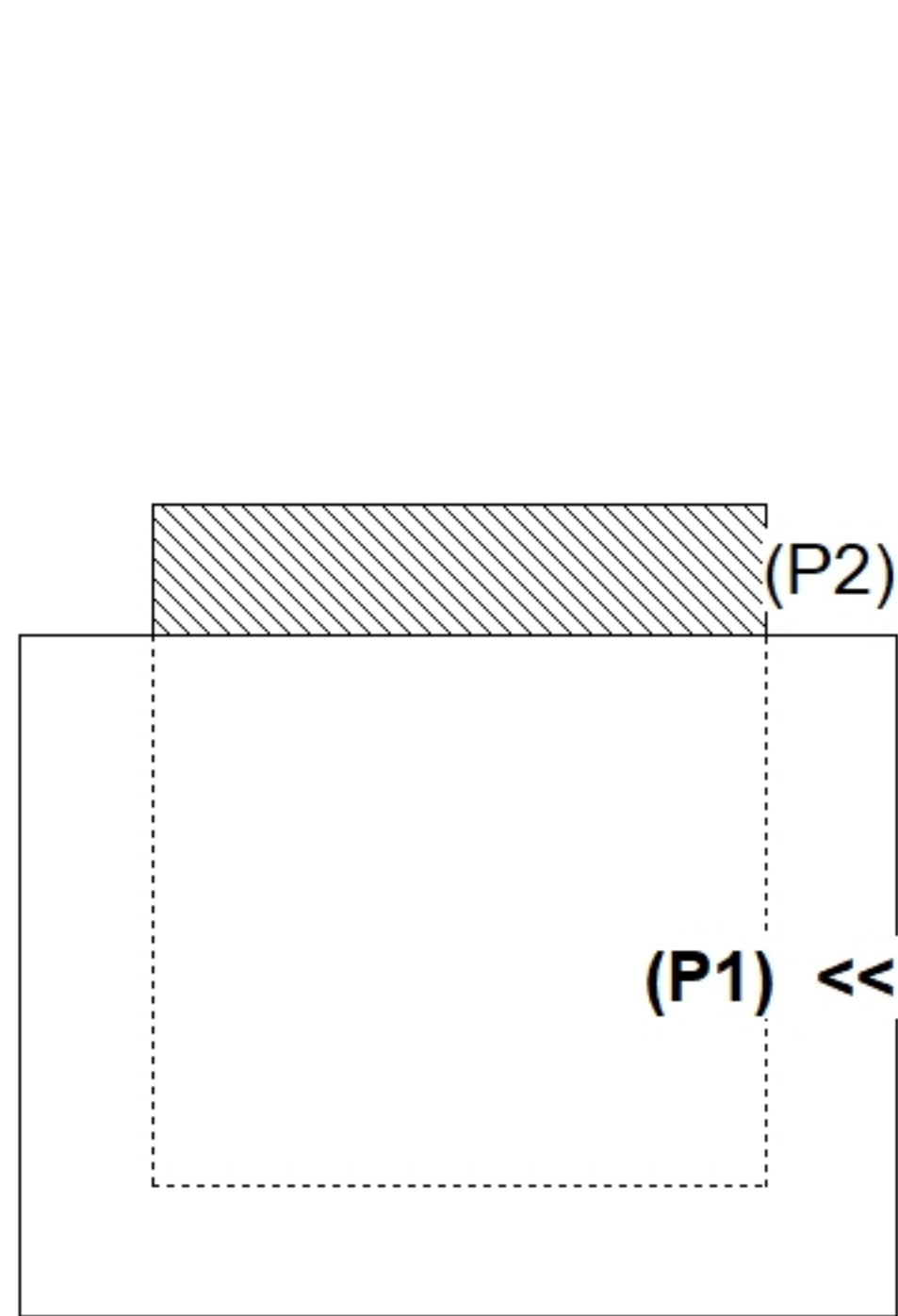
REINFORCING PER ASTM A615 (GRADE 60).  
 - WALLS (As .31) #5 BARS AT 12" C.C.E.W.  
 - FLOOR (As .31) #5 BARS AT 12" C.C.E.W.

Rim: 571.82' Rim to Invert: 2.43' Slack: 0.416" Sump: 2.256" Step Position:

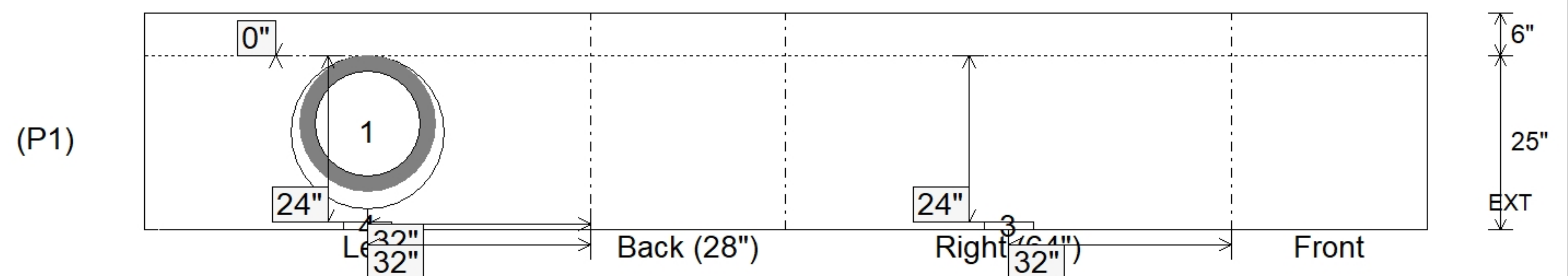
Position	Elev	Angle	Ext. (cw)	Pipe	Pipe OD	Connector	Hole	Horz Size	Up ( )	Offset
Invert 1	569.39'	270°	38"	15" RCP B WALL	19.5"	Hole 22	22"	22"	0"	0"
Invert 2										
Invert 3	571.2'	90°	38"	7" x 1" LINTEL BAR SLOT	7" x 1"	LINTEL BAR SLOT 7"x1"	7" x 1"	7"	24"	0"
Invert 4	571.2'	270°	38"	7" x 1" LINTEL BAR SLOT	7" x 1"	LINTEL BAR SLOT 7"x1"	7" x 1"	7"	24"	0"
Invert 5										
Invert 6										
Invert 7										
Invert 8										

RIGHT-SIDE UP VIEW (int. dimensions)

UPSIDE-DOWN VIEW (int. dimensions)



INSIDE WALL DIMENSIONS



Coating (Int): Coating (Ext):	Seam Up: Flat Seam Dn: n/a	Wall Thickness: 6" Floor Height: 6"	Height (Int): 25" Height (Ext): 31"	Weight (Net): 3950 lb Volume (Net): 1.01cu.yd
----------------------------------	-------------------------------	--	--	--