

Job Name: 24-3511 Coles Ferry Section 18 & 19  
 Job Location: Lebanon, TN  
 Contractor: Covenant Constructors, LLC

Plant: Beaver Dam, KY  
 2/26/2026 6:50:24 AM

Tech: J. Horsley  
 PC: A. Chambers



**Structure ID: CB12**

**P2 MH06LD08S**

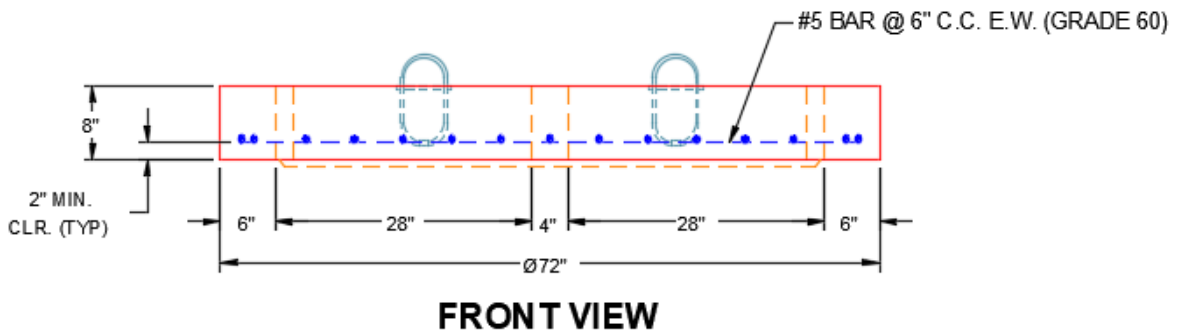
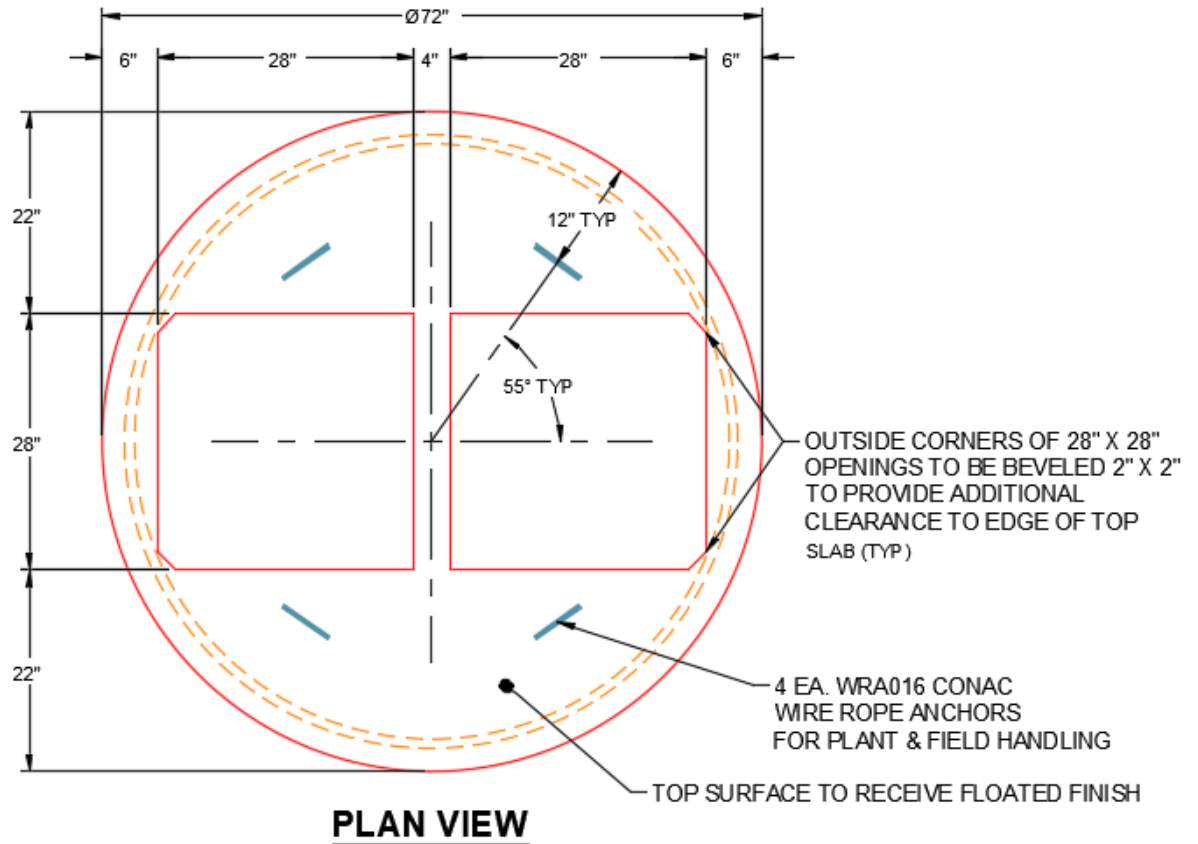
**MH FLAT TOP w/(2) 28"x28" Holes F/F**

- P3) 28" x 28" - CASTING HEIGHT - 6"
- P2) 60" - MH FLAT TOP w/(2) 28"x28" Holes F/F - 8"
- P1) 60" - MH BASE Custom Ht F/n - 69"
- 1) CASTING - JBS 3101 Double Set (F/G/H)
- 1) 60" - SGL 1"x14.5' Butyl (2x)
- 2) Hole - 40
- 1) Hole - 22
- 5) MH Step ML-10-TDS-NCR - 10"

0 lb  
 1661 lb  
 8665 lb  
 1238 lb  
 0 lb  
 0 lb  
 0 lb  
 0 lb  
 0 lb  
 -----  
 Structure Total: 11564 lb

Structure Notes:

1. PER ASTM C913 SPECIFICATIONS.
  2. CONCRETE = 4,000 PSI AT 28 DAYS.
  3. NO INVERT CHANNEL.
  4. CASTING BY ICAST (2ea JBS-3101 F/G/H)
- REINFORCING PER ASTM A615 (GRADE 60).  
 - TOP SLAB (As .62) #5 BARS AT 6" C.C.E.W.  
 - WALLS (As .31) #5 BARS AT 12" C.C.E.W.  
 - FLOOR (As .31) #5 BARS AT 12" C.C.E.W.



Coating (Int):  
 Coating (Ext):

Seam Up: Flat  
 Seam Dn: Flat

Wall Thickness: 6"

Height (Ext): 8"

Weight (Net): 1661 lb  
 Volume (Net): 0.42cu.yd