

Job Name: 24-3511 Coles Ferry Section 18 & 19  
 Job Location: Lebanon, TN  
 Contractor: Covenant Constructors, LLC

Plant: Beaver Dam, KY  
 2/26/2026 7:03:45 AM

Tech: J. Horsley  
 PC: A. Chambers



**Structure ID: CB10**

**P2 MH060LD08S**

**MH FLAT TOP w/(2) 28"x28" Holes F/F**

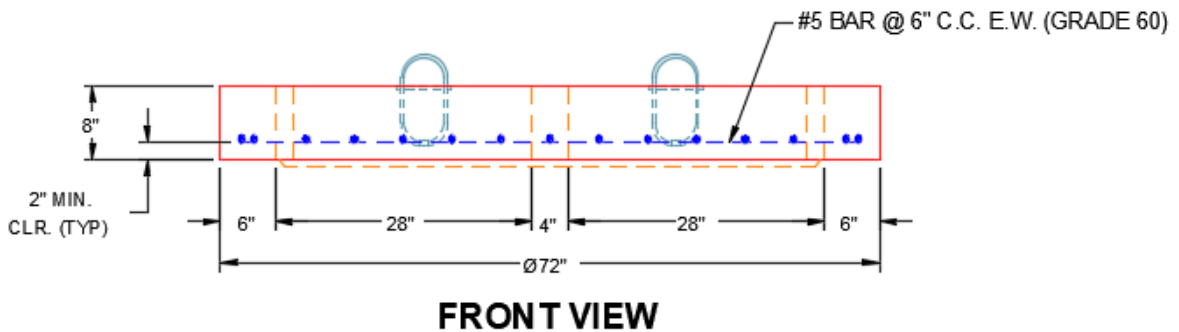
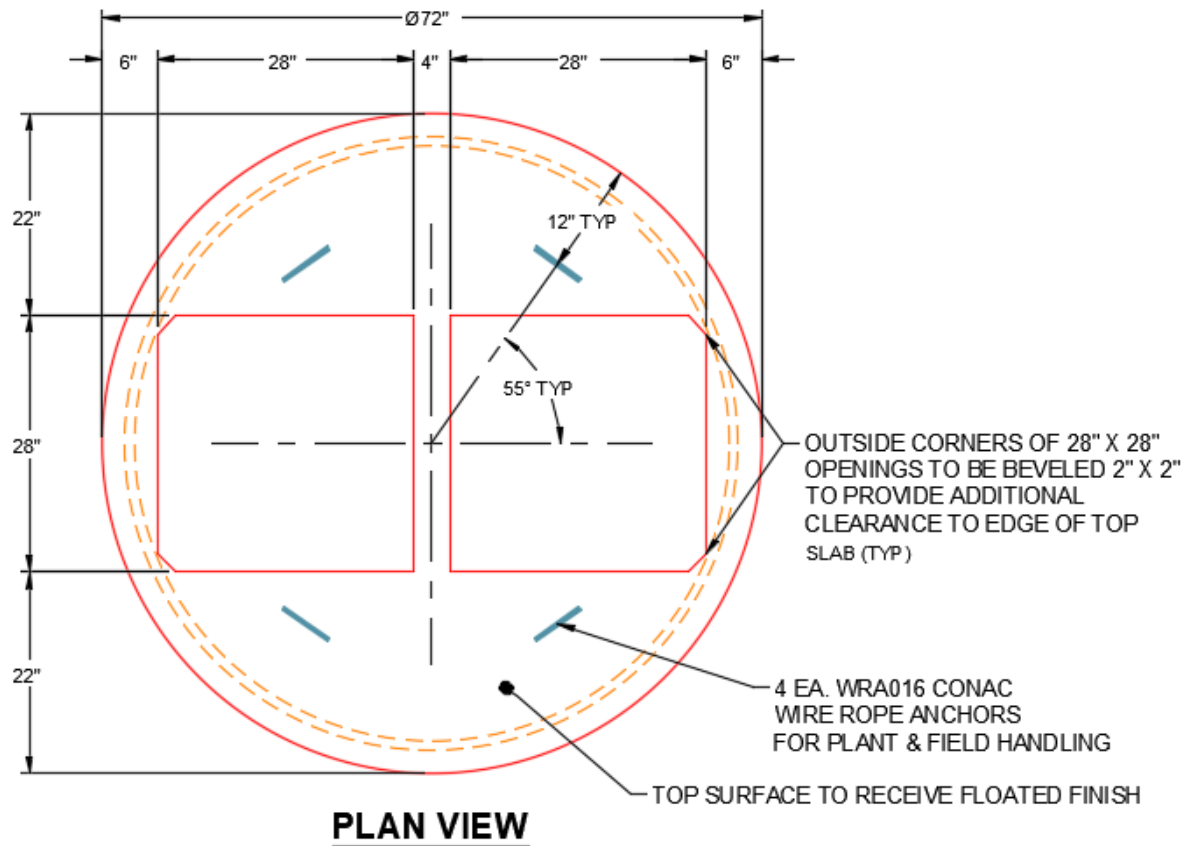
- P3) 28" x 28" - CASTING HEIGHT - 6"
- P2) 60" - MH FLAT TOP w/(2) 28"x28" Holes F/F - 8"
- P1) 60" - MH BASE Custom Ht F/n - 45"
- 1) CASTING - JBS 3101 Double Set (F/G/H)
- 1) 60" - SGL 1"x14.5' Butyl (2x)
- 1) Hole - 40
- 1) Hole - 22
- 1) Hole - 32
- 3) MH Step ML-10-TDS-NCR - 10"

0 lb  
 1666 lb  
 6502 lb  
 1238 lb  
 0 lb  
 0 lb  
 0 lb  
 0 lb  
 0 lb  
 0 lb  
 Structure Total: 9406 lb

Structure Notes:

1. PER ASTM C913 SPECIFICATIONS.
2. CONCRETE = 4,000 PSI AT 28 DAYS.
3. NO INVERT CHANNEL.
4. CASTING BY ICAST (2ea. JBS 3101 F/G/H).

REINFORCING PER ASTM A615 (GRADE 60).  
 - TOP SLAB (As .62) #5 BARS AT 6" C.C.E.W.  
 - WALLS (As .18)  
 - FLOOR (As .31) #5 BARS AT 12" C.C.E.W.



Coating (Int):  
 Coating (Ext):

Seam Up: Flat  
 Seam Dn: Flat

Wall Thickness: 6"

Height (Ext): 8"

Weight (Net): 1666 lb  
 Volume (Net): 0.42cu.yd