

Job Name: 24-3061B Graves Co Admin Building
 Job Location: Mayfield, KY
 Contractor: Sykes Family Farms, LLC.

Plant: Beaver Dam

Tech: J. Coppage

12/23/2025 11:09:18 AM

PC: J. Jarvis



Structure ID: ST-1

P1 BX3636-08BA36

BOX BASE 8inW, 8inF

- P2) 36" x 36" - CASTING HEIGHT - 3"
- P1) 36" x 36" - BOX BASE 8inW, 8inF - 36"
- 1) 36" x 36" - SGL 1"x14.5' Butyl (2x)
- 2) Hole - 24"

0 lb
 5335 lb
 0 lb
 0 lb

 Structure Total: 5335 lb

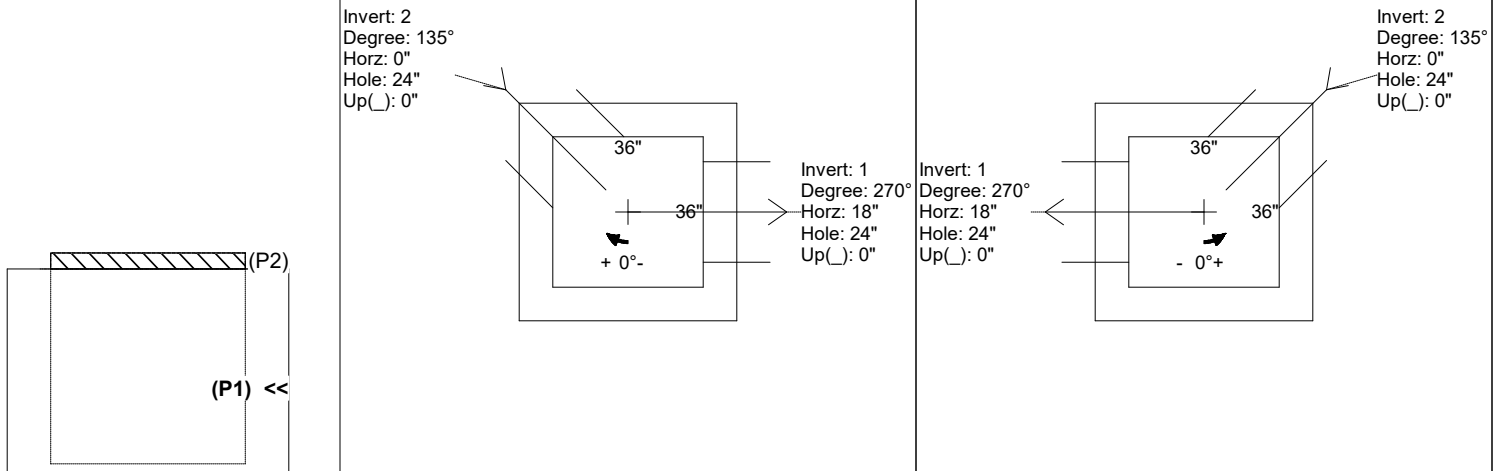
- Structure Notes:**
1. JR HOE HOE-595 PROVIDED BY ICAST.
 2. PER ASTM C913 SPECIFICATIONS.
 3. CONCRETE = 4,000 PSI AT 28 DAYS.
 4. REINFORCING PER ASTM A615 (GRADE 60).
 - WALLS (As .12) #5 BARS AT 12" C.C.E.W.
 - FLOOR (As .12) #5 BARS AT 12" C.C.E.W.

Rim: 465.56' Rim to Invert: 3.36' Slack: 2.92" Sump: 1.6" Step Position:

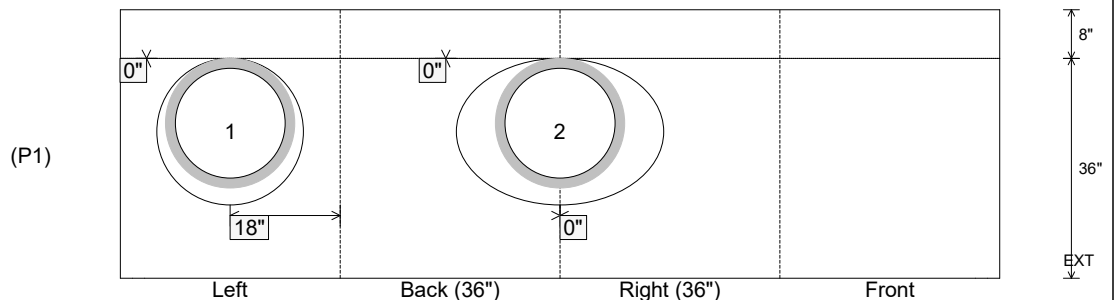
Position	Elev	Angle	Ext. (cw)	Pipe	Pipe OD	Connector	Hole	Horz Size	Up ()	Offset
Invert 1	462.2'	270°	26"	18" HDPE	21.2"	Hole 24	24"	24"	0"	0"
Invert 2	462.2'	135°	0"	18" HDPE	21.2"	Hole 24	24"	16.971", 16.971"	0"	0"
Invert 3										
Invert 4										
Invert 5										
Invert 6										
Invert 7										
Invert 8										

RIGHT-SIDE UP VIEW (int. dimensions)

UPSIDE-DOWN VIEW (int. dimensions)



INSIDE WALL DIMENSIONS



Coating (Int):
 Coating (Ext):

Seam Up: Flat
 Seam Dn: n/a

Wall Thickness: 8"
 Floor Height: 8"

Height (Int): 36"
 Height (Ext): 44"

Weight (Net): 5335 lb
 Volume (Net): 1.36cu.yd