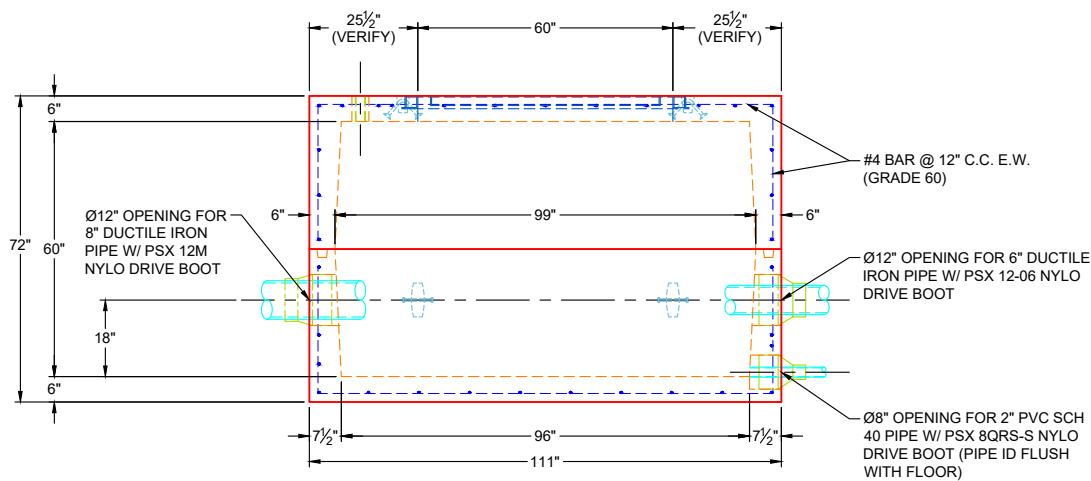


PLAN VIEW

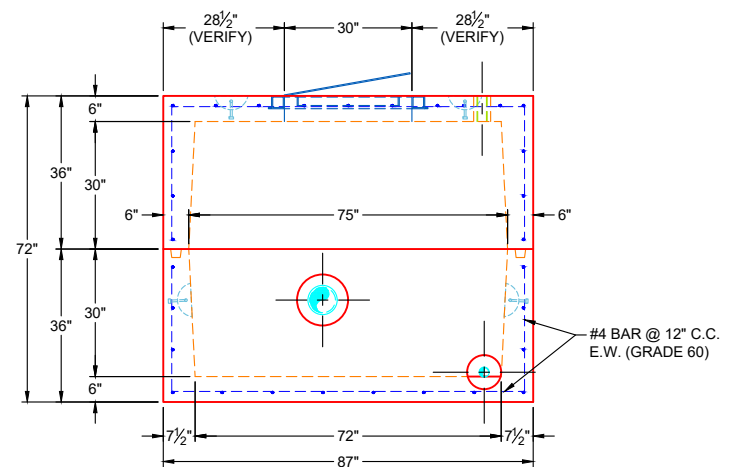
GENERAL NOTES:

1. MANUFACTURED TO ASTM C-913 (LATEST REVISION)
2. CONCRETE: 5,000 PSI AT 28 DAYS
3. REINFORCEMENT: #4 BAR @ 12" C.C. E.W. (GRADE 60) - 2" MIN. REBAR CLEARANCE (TYP)
4. WEIGHTS:

36" MONOTOP	10,290 LBS
30" BASE	10,960 LBS
TOTAL WEIGHT	21,250 LBS
5. CONTRACTOR TO VERIFY ALL DIMENSIONS BEFORE MANUFACTURE
6. HALLIDAY W1S 30" X 60" HATCH SUPPLIED BY ICAST - HATCH TO BE CAST INTO FLAT LID
7. PSX NYLO DRIVE BOOTS SUPPLIED BY ICAST
8. 2" PVC SCH 40 VENT PIPE SUPPLIED BY OTHERS
9. JOINT SEALANT: CONSEAL CS-102 - 1" (PRIMARY & SECONDARY ROWS)
EXTERIOR WRAP: CONSEAL CS-212 - 6" WIDE
10. PLEASE VERIFY:
 - 10.a. LOCATION OF 6" DUCTILE IRON & 8" DUCTILE IRON PIPES
 - 10.b. LOCATION OF HATCH



FRONT VIEW



SIDE VIEW

REVISION INFORMATION

REV. DATE: NO REVISIONS TO DATE



SUBMITTAL DRAWING: 72" X 96" VALVE VAULT

CUSTOMER: WEDDLE ENTERPRISES, INC.

PROJECT: EAST JESSAMINE MIDDLE SCHOOL PS

STRUCTURE: VALVE VAULT

QUOTE/SALES ORDER NO: 24-2754

CHECKED BY: B. SMITH

DRAWN BY: K. CARDWELL

DATE: 08/07/25

SCALE: NTS

PG. 1 OF 1